

Road Luminaires



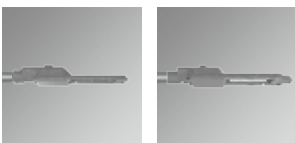
 **LED Master Die-Cast Aluminium Housing Series**

**SMART CITIES!**  
Stand Alone Automation System  
Or  
IoT Technologies  
Make your city SMARTER!



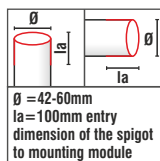
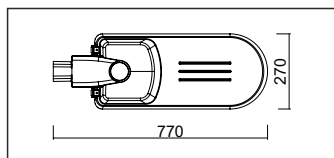
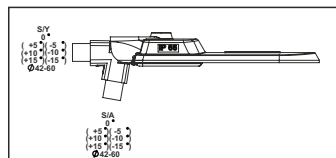
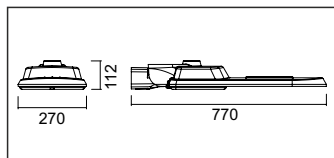
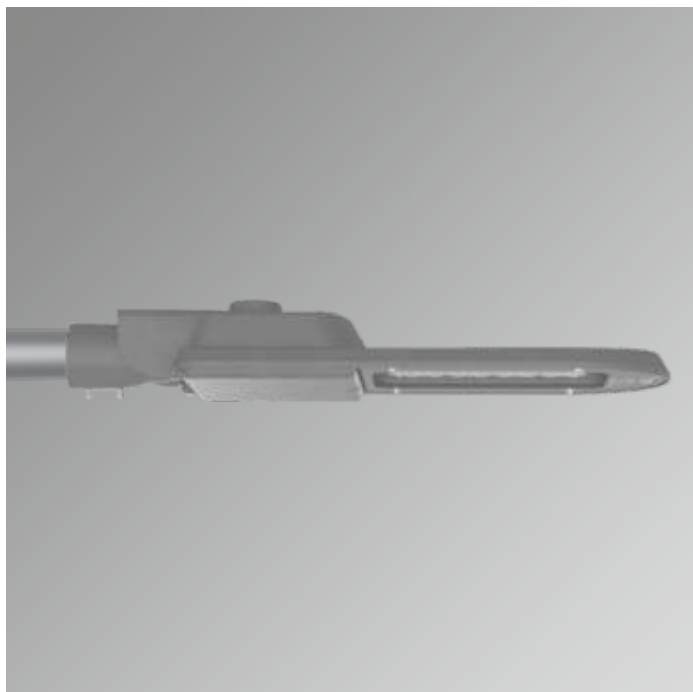
**LED Master**  
CL2090 - CL2095

 Eco Gold Lumen Package  Performance Platinum Lumen Package



+90 232 444 4 236 

[www.cemdag.com](http://www.cemdag.com) 



## Description

### Features

- Mounting module is fixed to any post top or side entry spigot from 42 to 60mm.
- Optional 76mm spigot.
- Dustproof and jetproof to IP66.
- Quick, easy and safe installation.
- Complies with Me/Ce/S road lighting standards EN13201.
- Special designed optics maximizes the distance between poles.
- High quality LED modules from approved international suppliers.
- Thermal-protected, voltage regulated drivers.
- Class I (standard) or class II (optional).
- Low CO<sub>2</sub> emission.
- 14 adjustable tilt angles; 0, ±5, ±10, ±15 for side entry 0, ±5, ±10, ±15 for post top.
- Two different tempered glass mounting options; capsule mounting system or hinged openable system.
- Choice of any RAL colour on request.
- Standard RAL 7021 (Metalic).
- Low service and maintenance costs.
- Maximized energy savings.
- The die -cast aluminium body and high quality materials ensure durability.
- Vandal proof and vibration proof.
- The latest led solution for outdoor lighting.
- The right lighting performance for project requirements.
- Maximum 32 high power white LEDs.
- Available in three different colour rendering index. CRI > 70 (standard), CRI > 80 (optional) or CRI > 90 (optional).
- Easy connect system provides tool-free electrical connection.
- Effective thermal management.
- More light output and service life.
- High energy saving potential.
- The original aesthetic design.
- Available in seven different colour temperatures; 2700K (warm white), 3000K (warm white), 4000K (natural white), 5000K (cool white), 5700K (cool white), 6000K (cool white), 6500K (cool white)
- Good lighting uniformity.
- Mercury free.
- Sharp profile.
- Fully complies RoHS requirements.
- Recyclable raw materials.

### Driver features;

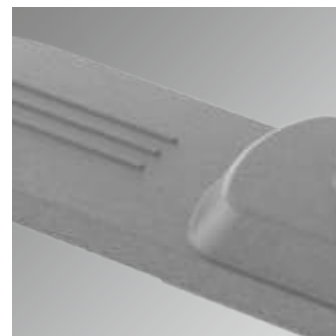
- Constant current.
- Harmonic filter protection.
- Short circuit protection and thermal protection integration.

### Materials

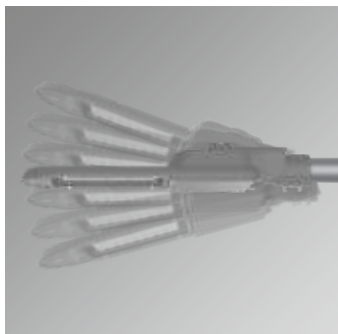
- Canopy; polyester powder painted non-corrosive high-pressure die-cast aluminium.
- Refractor; tempered 5mm flat glass, easy replaceable.
- Pole mounting module; non-corrosive die-cast aluminium.
- Clips; aluminium clips with stainless steel spring.
- Gasket; silicon integral injected gasket effused to refractor and gear kit cover.
- Gear kit cover; polyester powder painted non-corrosive high-pressure die-cast aluminium.
- Bolt and nuts; stainless steel.
- Pole mounting bolt; hex socket (4 hex key wrenches) or bolt (13 wrenches) stainless steel.
- Pole mounting bolt; 2 items.

### Applications

- Highways
- Secondary roads
- Residential areas
- Parks
- Car parks
- Environment and security lighting
- Industrial areas
- Roundabouts
- Street and avenue



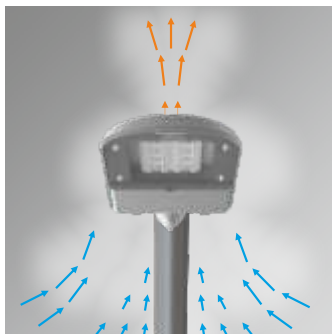
**Side Entry 0°/±5°/±10°/±15°**



**Post Top 0°/±5°/±10°/±15°**

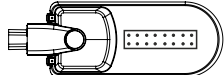


**Efficient Cooling System**



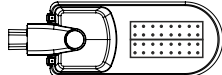
**LED Configuration**

16 LED Version



**LED Configuration**

32 LED Version



**Technical Data**

- 220-240V AC 50/60 Hz ECG
- Pg 20x1,5 thread
- Dimensions: 270x770x112mm
- Power factor > 0.95
- CRI > 70 (Standard)

**Standards**

- CE, TSE, GOST, RoHS, ENEC, VDE, EN60598-2-3.
- EN62471 Photo biological safety of lamps and lamp systems.
- EN62031 LED modules for general lighting-safety specifications.



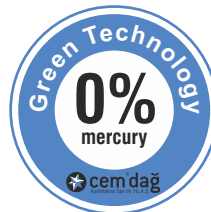
**CELVIN CHART**



**CRI**



**Glare-Free Optic Lens Design For Visual Comfort**





# Master CL2090

## Die-Cast Aluminium Housing



### Road Luminaires

## LED Master CL2090 Die-Cast Aluminium Housing

IP66 / IK10 / 4000K (Standard) / RAL 7021 / CL1. Class 1 (Standard) / CRI>70 (Standard)



	W (mm)	L (mm)	h (mm)	Item /Box	Average Weight (kg)	Order Code	
16/~16W 350mA	270	770	112	1	8.20	L2090-LED016NW-ECG	
16/~24W 500mA	270	770	112	1	8.20	L2090-LED024NW-ECG	
16/~30W 600mA	270	770	112	1	8.20	L2090-LED030NW-ECG	
16/~35W 700mA	270	770	112	1	8.20	L2090-LED035NW-ECG	
16/~40W 800mA	270	770	112	1	8.20	L2090-LED040NW-ECG	
16/~50W 925mA	270	770	112	1	8.20	L2090-LED050NW-ECG	
16/~60W 1050mA	270	770	112	1	8.20	L2090-LED060NW-ECG	
32/~62W/ 600mA	270	770	112	1	8.20	L2090-LED062NW-ECG	
32/~72W/ 700mA	270	770	112	1	8.20	L2090-LED072NW-ECG	
32/~82W/ 800mA	270	770	112	1	8.20	L2090-LED082NW-ECG	
32/~100W/ 925mA	270	770	112	1	8.20	L2090-LED100NW-ECG	
32/~110W/1050mA	270	770	112	1	8.20	L2090-LED110NW-ECG	

Option Code		
-RO. RAL 7021 Metallic (Standard)	-CW. Colour Temperature 6500K	-CR7. CRI>70 (Standard)
-RO. RAL 7047	-CW. Colour Temperature 6000K	-CR8. CRI>80 (Optional)
-RO. RAL 9007	-CW. Colour Temperature 5700K	-CR9. CRI>90 (Optional)
-DIM.0-10V or 1-10V Dimmable Electronic Driver	-CW. Colour Temperature 5000K	-CL1. Class 1 (Standard)
-ONE. Stand Alone Automation	-NW. Colour Temperature 4000K (Standard)	-CL2. Class 2 (Optional)
-DAL. DALI Electronic Driver	-WW. Colour Temperature 3000K	-EG. Eco Gold Lumen Package (Standard)
-IoT. Internet of Things Automation	-WW. Colour Temperature 2700K	-PP. Performance Platinum Lumen Package (Optional)
-MDBA. Wall Console (Accessories)	-COL.1030 (Standard)	

According to your preference, please add the **Option Code** at the end of the **Order Code**  
 Lumens are minimum 115 lm/W maximum 145 lm/W depends on currents and LED quantities.

Standard lens is COL1030. According to your preference, please add the **Optional Lens Code** at the end of the **Order Code**. To see other lens options please see COL options page





# Master CL2095

## Die-Cast Aluminium Housing



### Description

#### Features

- Mounting module is fixed to any post top side entry spigot from 42 to 60 mm.
- Optional 76 mm spigot.
- Dustproof and jetproof to IP66.
- Quick, easy and safe installation.
- Complies with Me/Ce/S road lighting standards EN13201.
- Special designed optics maximizes the distance between poles.
- High quality LED modules from approved international suppliers.
- Thermal-protected, voltage regulated drivers.
- Class I (standard) or class II (optional).
- Low CO<sub>2</sub> emission.
- 14 adjustable tilt angles; 0, ±5, ±10, ±15 for side entry 0, ±5, ±10, ±15 for post top.
- Two different tempered glass mounting options; capsule mounting system or hinged openable system.
- Choice of any RAL colour on request.
- Standart RAL 7021 (Metalic).
- Low service and maintenance costs.
- Maximized energy savings.
- The die -cast aluminium body and high quality materials ensure durability.
- Vandal proof and vibration proof.
- The latest led solution for outdoor lighting.
- The right lighting performance for project requirements.
- Maximum 64 high power white LEDs.
- Available in three different colour rendering index. CRI > 70 (standard), CRI > 80 (optional) or CRI > 90 (optional).
- Easy connect system provides tool-free electrical connection.
- Effective thermal management.
- More light output and service life.
- High energy saving potential.
- The original aesthetic design.
- Available in seven different colour temperatures; 2700K (warm white), 3000K (warm white), 4000K (natural white), 5000K (cool white), 5700K (cool white), 6000K (cool white), 6500K (cool white)
- Good lighting uniformity.
- Mercury free.
- Sharp profile.
- Fully complies RoHS requirements.
- Recyclable raw materials.

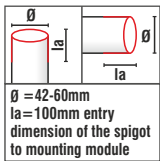
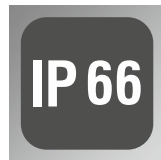
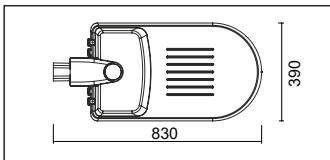
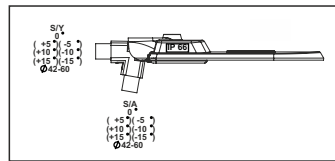
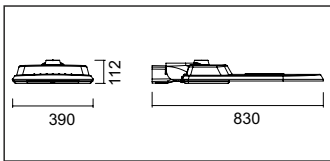
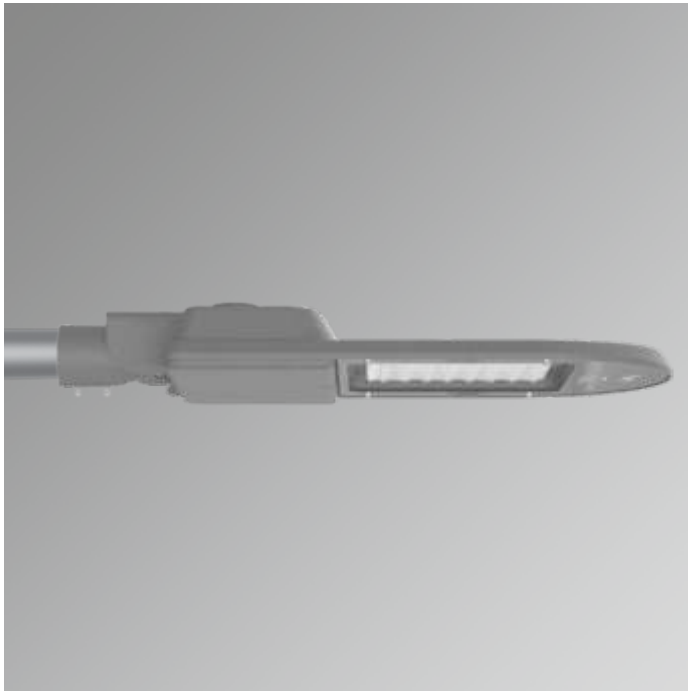
- Driver features;
- Constant current.
  - Harmonic filter protection.
  - Short circuit protection and thermal protection integration.

#### Materials

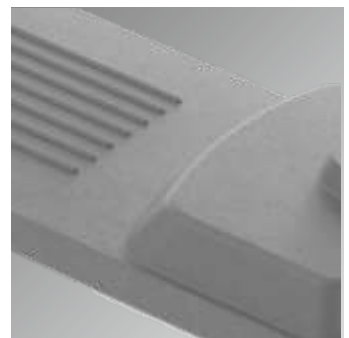
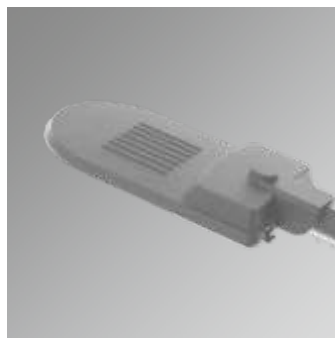
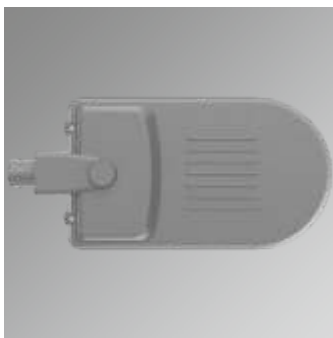
- Canopy; polyester powder painted non-corrosive high-pressure die-cast aluminium.
- Refractor; tempered 5mm flat glass, easy replaceable.
- Pole mounting module; non-corrosive die-cast aluminium.
- Clips; aluminium clips with stainless steel spring.
- Gasket; silicon integral injected gasket effused to refractor and gear kit cover.
- Gear kit cover; polyester powder painted non-corrosive high-pressure die-cast aluminium.
- Bolt and nuts; stainless steel.
- Pole mounting bolt; hex socket (4 hex key wrenches) or bolt (13 wrenches) stainless steel.
- Pole mounting bolt; 2 items.

#### Applications

- Highways
- Secondary roads
- Residential areas
- Parks
- Car parks
- Environment and security lighting
- Industrial areas
- Roundabouts
- Street and avenue



g = 42-60mm  
la = 100mm entry dimension of the spigot to mounting module



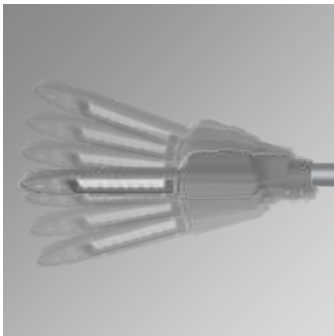


# Master CL2095

## Die-Cast Aluminium Housing



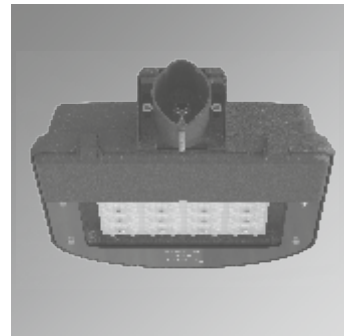
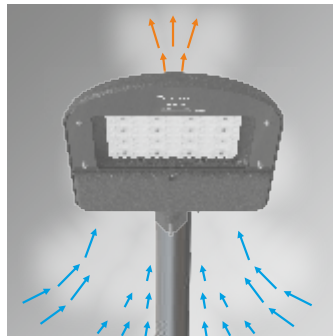
### Side Entry 0°/±5°/±10°/±15°



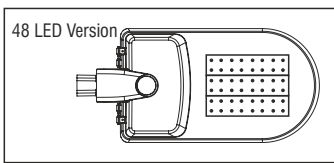
### Post Top 0°/±5°/±10°/±15°



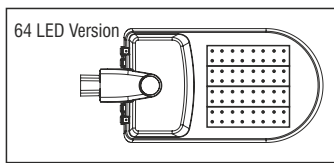
### Efficient Cooling System



### LED Configuration



### LED Configuration

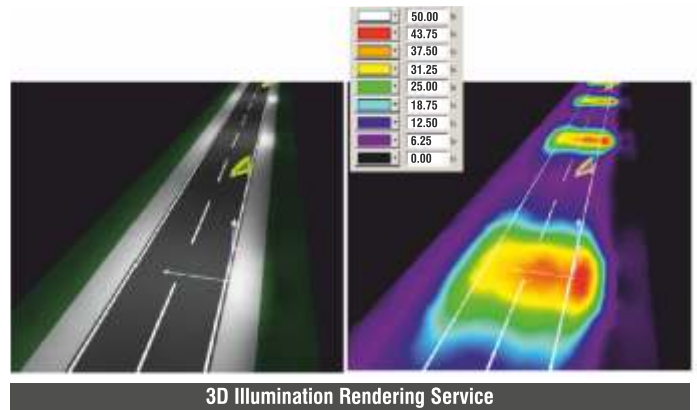


#### Technical Data

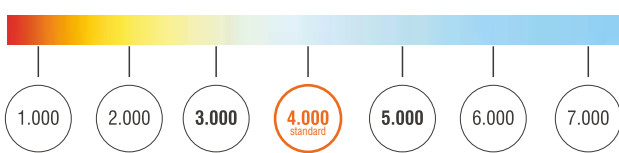
- 220-240V AC 50/60 Hz ECG
- Pg 20x1,5 thread
- Dimensions: 390x830x112mm
- Power factor > 0.95
- CRI > 70 (Standard)

#### Standards

- CE, TSE, GOST, RoHS, ENEC, VDE, EN60598-2-3.
- EN62471 Photo biological safety of lamps and lamp systems.
- EN62031 LED modules for general lighting-safety specifications.



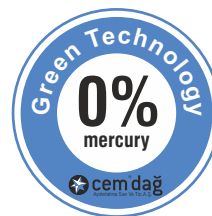
### CELVIN CHART



### CRI



### Glare-Free Optic Lens Design For Visual Comfort





# Master CL2095

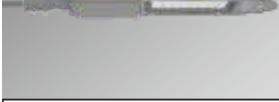
## Die-Cast Aluminium Housing



### Road Luminaires

### LED Master CL2095 Die-Cast Aluminium Housing

IP66 / IK10 / 4000K (Standard) / RAL 7021 / CL1. Class 1 (Standard) / CRI>70 (Standard)



	W (mm)	L (mm)	h (mm)	Item /Box	Average Weight (kg)	Order Code	
48/~90W 600mA	390	830	112	1	11.00	L2095-LED090NW-ECG	
48/~110W 700mA	390	830	112	1	11.00	L2095-LED110NW-ECG	
48/~120W 800mA	390	830	112	1	11.00	L2095-LED120NW-ECG	
48/~155W 925mA	390	830	112	1	11.00	L2095-LED155NW-ECG	
48/~165W 1050mA	390	830	112	1	11.00	L2095-LED165NW-ECG	
64/~102W/ 500mA	390	830	112	1	11.00	L2095-LED102NW-ECG	
64/~125W/ 600mA	390	830	112	1	11.00	L2095-LED125NW-ECG	
64/~150W/ 700mA	390	830	112	1	11.00	L2095-LED150NW-ECG	
64/~175W/ 800mA	390	830	112	1	11.00	L2095-LED175NW-ECG	
64/~200W/ 925mA	390	830	112	1	11.00	L2095-LED200NW-ECG	
64/~220W/ 1050mA	390	830	112	1	11.00	L2095-LED220NW-ECG	

#### Option Code

-RO. RAL 7021 Metallic (Standard)	-CW. Colour Temperature 6500K	-CR7. CRI>70 (Standard)
-RO. RAL 7047	-CW. Colour Temperature 6000K	-CR8. CRI>80 (Optional)
-RO. RAL 9007	-CW. Colour Temperature 5700K	-CR9. CRI>90 (Optional)
-DIM.0-10V or 1-10V Dimmable Electronic Driver	-CW. Colour Temperature 5000K	-CL1. Class 1 (Standard)
-ONE. Stand Alone Automation	-NW. Colour Temperature 4000K (Standard)	-CL2. Class 2 (Optional)
-DAL. DALI Electronic Driver	-WW. Colour Temperature 3000K	-EG. Eco Gold Lumen Package (Standard)
-IoT. Internet of Things Automation	-WW. Colour Temperature 2700K	-PP. Performance Platinum Lumen Package (Optional)
-MDBA. Wall Console (Accessories)	-COL.1030 (Standard)	

According to your preference, please add the **Option Code** at the end of the **Order Code**  
 Lumens are minimum 115 lm/W maximum 145 lm/W depends on currents and LED quantities.

Standard lens is COL1030. According to your preference, please add the **Optional Lens Code** at the end of the **Order Code**. To see other lens options please see COL options page

LED Flexi Magnum Plus Die-Cast Aluminium Housing Series

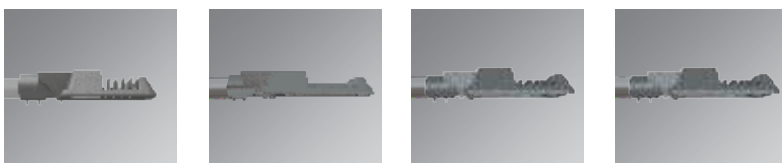
**SMART CITIES!**  
Stand Alone Automation System  
Or  
IoT Technologies  
Make your city SMARTER!



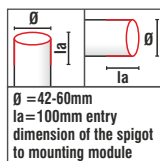
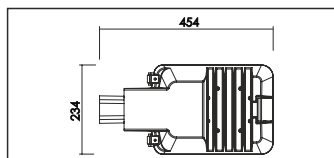
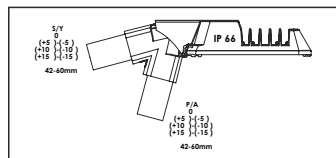
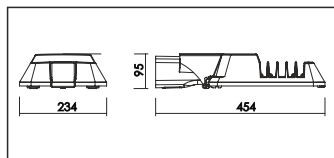
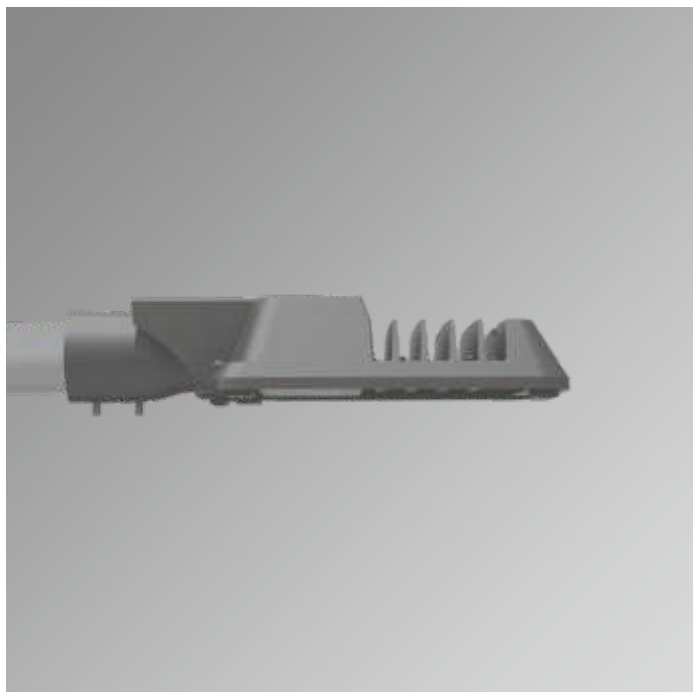
**LED Flexi Magnum Plus**

Mini CL2030 - Micro CL2030A - Midi CL2040 - Macro CL2040A

Eco Gold Lumen Package Performance Platinum Lumen Package







### Description

#### Features

- Mounting module is fixed to any post top or side entry spigot from 42 to 60ø mm.
- Optional 76ø mm spigot.
- Dustproof and jetproof to IP66.
- Quick, easy and safe installation.
- Complies with Me/Ce/S road lighting standards EN13201.
- Special designed optics maximizes the distance between poles.
- High quality LED modules from approved international suppliers.
- Thermal-protected, voltage regulated drivers.
- Class I (standard) or class II (optional).
- Low CO<sub>2</sub> emission.
- 14 adjustable tilt angles; 0, ±5, ±10, ±15 for side entry 0, ±5, ±10, ±15 for post top.
- Two different tempered glass mounting options; capsule mounting system or hinged openable system.
- Choice of any RAL colour on request.
- Standart RAL 9007.
- Low service and maintenance costs.
- Maximized energy savings.
- The die -cast aluminium body and high quality materials ensure durability.
- Vandal proof and vibration proof.
- The latest led solution for outdoor lighting.
- The right lighting performance for project requirements.
- Maximum 16 high power white LEDs.
- Available in three different colour rendering index. CRI > 70 (standard), CRI > 80 (optional) or CRI > 90 (optional)
- Easy connect system provides tool-free electrical connection.
- Effective thermal management.
- More light output and service life.
- High energy saving potential.
- The original aesthetic design.
- Available in seven different colour temperatures; 2700K (warm white) 3000K (warm white), 4000K (natural white), 5000K (cool white), 5700K (cool white), 6000K (cool white), 6500K (cool white)
- Good lighting uniformity.
- Mercury free.
- Sharp profile.
- Fully complies RoHS requirements.
- Recyclable raw materials.

#### Driver features;

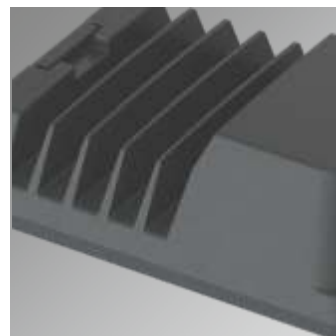
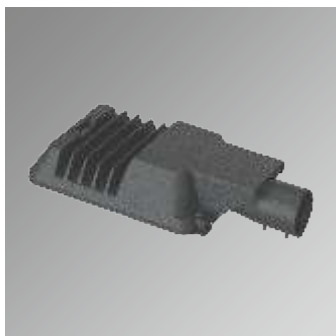
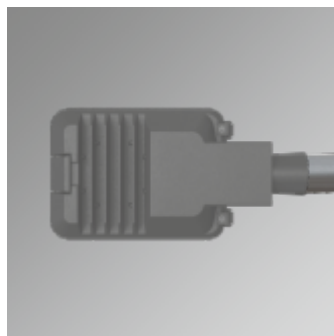
- Constant current.
- Harmonic filter protection.
- Short circuit protection and thermal protection integration.

#### Materials

- Canopy; polyester powder painted non-corrosive high-pressure die-cast aluminium.
- Refractor; tempered 5mm flat glass, easy replaceable.
- Pole mounting module; non-corrosive die-cast aluminium.
- Clips; aluminium clips with stainless steel spring.
- Gasket; silicon.
- Bolt and nuts; stainless steel.
- Pole mounting bolt; hex socket (4 hex key wrenches) or bolt (13 wrenches) stainless steel.
- Pole mounting bolt; 2 items.

#### Applications

- Highways
- Secondary roads
- Residential areas
- Parks
- Car parks
- Environment and security lighting
- Industrial areas
- Roundabouts
- Street and avenue

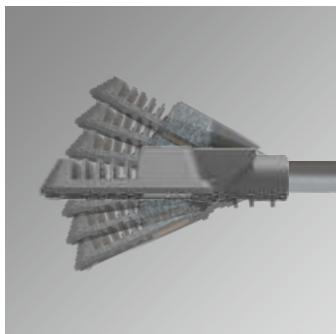


# Flexi Magnum Plus Mini CL2030

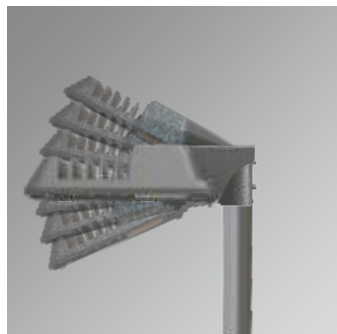
## LED Die-Cast Aluminium Housing



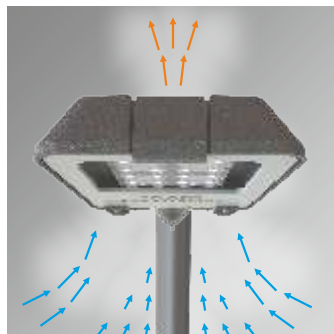
### Side Entry 0°/±5°/±10°/±15°



### Post Top 0°/±5°/±10°/±15°

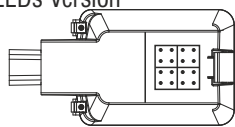


### Efficient Cooling System



### LED Configuration

#### 16 LEDs Version



#### Technical Data

- 220-240V AC 50/60 Hz ECG
- Pg 20x1,5 thread
- Dimensions: 234x454x95mm
- Power factor ≥ 0.95
- CRI ≥ 70 (Standard)

#### Standards

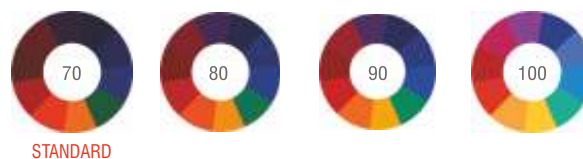
- CE, TSE, GOST, RoHS, ENEC, VDE, EN60598-2-3.
- EN62471 Photo biological safety of lamps and lamp systems.
- EN62031 LED modules for general lighting-safety specifications.



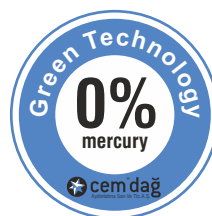
### CELVIN CHART



### CRI

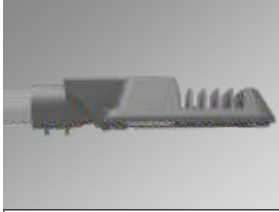


### Glare-Free Optic Lens Design For Visual Comfort



# Flexi Magnum Plus Mini CL2030

## LED Die-Cast Aluminium Housing



### Road Luminaires

#### LED Flexi Magnum Plus Mini CL2030 Die-Cast Aluminium Housing

IP66 / IK10 / 4000K (Standard) / RAL 9007 / CL1. Class 1 (Standard) / CRI>70 (Standard)



	W (mm)	L (mm)	h (mm)	Item /Box	Average Weight (kg)	Order Code	
16/~16W 350mA	234	454	95	1	4.00	L2030-LED016NW-ECG	
16/~24W 500mA	234	454	95	1	4.00	L2030-LED024NW-ECG	
16/~30W 600mA	234	454	95	1	4.00	L2030-LED030NW-ECG	
16/~35W 700mA	234	454	95	1	4.00	L2030-LED035NW-ECG	
16/~40W 800mA	234	454	95	1	4.00	L2030-LED040NW-ECG	
16/~50W 925mA	234	454	95	1	4.00	L2030-LED050NW-ECG	
16/~60W 1050mA	234	454	95	1	4.00	L2030-LED060NW-ECG	

#### Option Code

-RO. RAL 9007 (Standard)	-CW. Colour Temperature 6500K	-CR7. CRI>70 (Standard)	-COL.1030 (Standard)
-RO. RAL 7047	-CW. Colour Temperature 6000K	-CR8. CRI>80 (Optional)	
-RO. RAL 7021 (Metalic)	-CW. Colour Temperature 5700K	-CR9. CRI>90 (Optional)	
-DIM.0-10V or 1-10V Dimmable Electronic Driver	-CW. Colour Temperature 5000K	-CL1. Class 1 (Standard)	
-ONE. Stand Alone Automation	-NW. Colour Temperature 4000K (Standard)	-CL2. Class 2 (Optional)	
-DAL. DALI Electronic Driver	-WW. Colour Temperature 3000K	-EG. Eco Gold Lumen Package (Standard)	
-IoT. Internet of Things Automation	-WW. Colour Temperature 2700K	-PP. Performance Platinum Lumen Package (Optional)	
-MDBA. Wall Console (Accessories)	-OP. Open System	-SK. Protection Case	

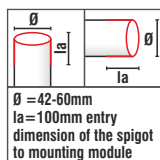
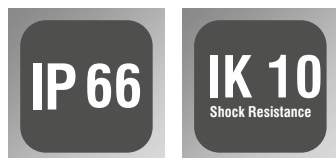
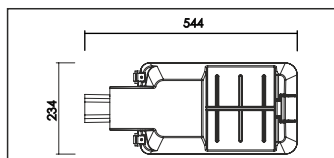
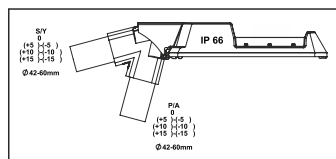
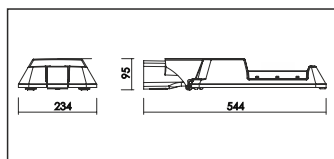
According to your preference, please add the **Option Code** at the end of the **Order Code**  
 Lumens are minimum 115 lm/W maximum 145 lm/W depends on currents and LED quantities.

Standard lens is COL1030. According to your preference, please add the **Optional Lens Code** at the end of the **Order Code**. To see other lens options please see COL options page



# Flexi Magnum Plus Micro CL2030A

## LED Die-Cast Aluminium Housing



Ø = 42-60mm  
la = 100mm entry  
dimension of the spigot  
to mounting module

### Description

#### Features

- Mounting module is fixed to any post top or side entry spigot from 42 to 60mm.
- Optional 76mm spigot.
- Dustproof and jetproof to IP66.
- Quick, easy and safe installation.
- Complies with Me/Ce/S road lighting standards EN13201.
- Special designed optics maximizes the distance between poles.
- High quality LED modules from approved international suppliers.
- Thermal-protected, voltage regulated drivers.
- Class I (standard) or class II (optional).
- Low CO<sub>2</sub> emission.
- 14 adjustable tilt angles; 0, ±5, ±10, ±15 for side entry 0, ±5, ±10, ±15 for post top.
- Two different tempered glass mounting options; capsule mounting system or hinged openable system.
- Choice of any RAL colour on request.
- Standard RAL 9007.
- Low service and maintenance costs.
- Maximized energy savings.
- The die-cast aluminium body and high quality materials ensure durability.
- Vandal proof and vibration proof.
- The latest led solution for outdoor lighting.
- The right lighting performance for project requirements.
- Available in three different colour rendering index. CRI > 70 (standard), CRI > 80 (optional) or CRI > 90 (optional)
- Easy connect system provides tool-free electrical connection.
- Effective thermal management.
- More light output and service life.
- High energy saving potential.
- The original aesthetic design.
- Maximum 24 high power white LEDs.
- Available in seven different colour temperatures; 2700K (warm white), 3000K (warm white), 4000K (natural white), 5000K (cool white), 5700K (cool white), 6000K (cool white), 6500K (cool white)
- Good lighting uniformity.
- Mercury free.
- Sharp profile.
- Fully complies RoHS requirements.
- Recyclable raw materials.

#### Driver features;

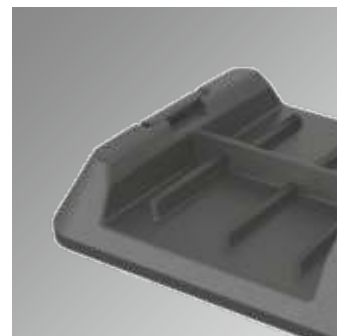
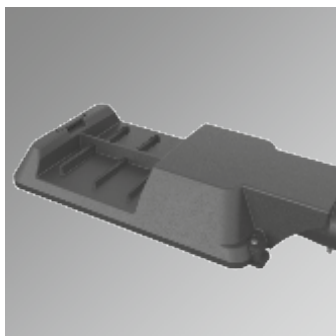
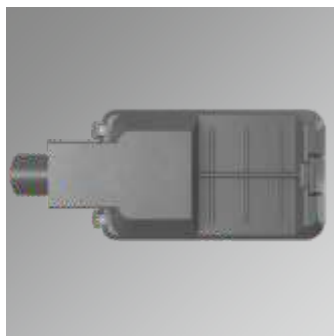
- Constant current.
- Harmonic filter protection.
- Short circuit protection and thermal protection integration.

#### Materials

- Canopy; polyester powder painted non-corrosive high-pressure die-cast aluminium.
- Refractor; tempered 5mm flat glass, easy replaceable.
- Pole mounting module; non-corrosive die-cast aluminium.
- Clips; aluminium clips with stainless steel spring.
- Gasket; silicon.
- Bolt and nuts; stainless steel.
- Pole mounting bolt; hex socket (4 hex key wrenches) or bolt (13 wrenches) stainless steel.
- Pole mounting bolt; 2 items.

#### Applications

- Highways
- Secondary roads
- Residential areas
- Parks
- Car parks
- Environment and security lighting
- Industrial areas
- Roundabouts
- Street and avenue



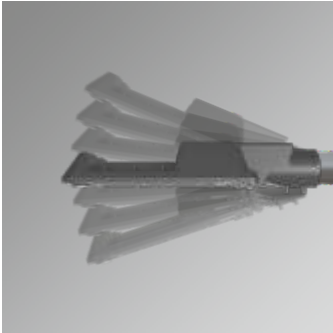


# Flexi Magnum Plus Micro CL2030A

## Die-Cast Aluminium Housing



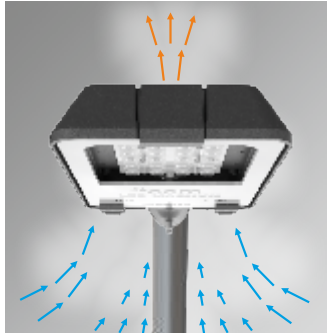
### Side Entry 0°/±5°/±10°/±15°



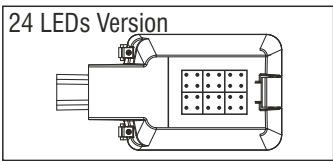
### Post Top 0°/±5°/±10°/±15°



### Efficient Cooling System



### LED Configuration

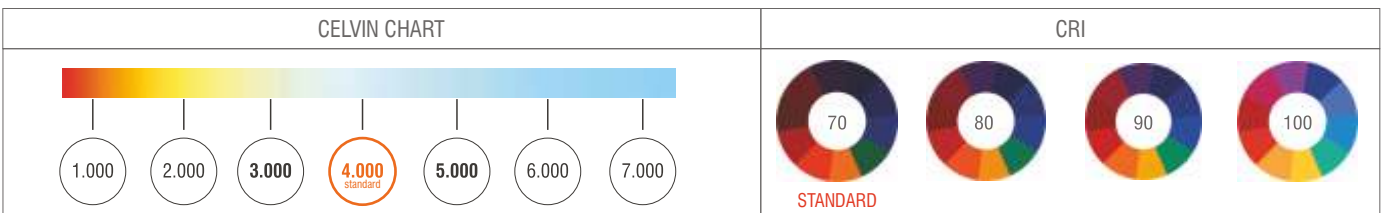
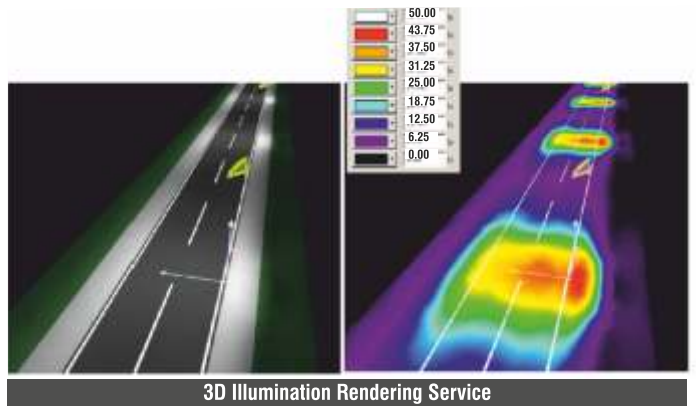


#### Technical Data

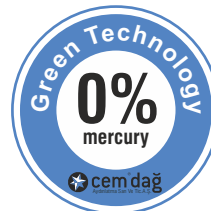
- 220-240V AC 50/60 Hz ECG
- Pg 20x1,5 thread
- Dimensions: 234x454x95mm
- Power factor ≥ 0.95
- CRI ≥ 70 (Standard)

#### Standards

- CE, TSE, GOST, RoHS, ENEC, VDE, EN60598-2-3.
- EN62471 Photo biological safety of lamps and lamp systems.
- EN62031 LED modules for general lighting-safety specifications.



### Glare-Free Optic Lens Design For Visual Comfort



# Flexi Magnum Plus Micro CL2030A

## LED Die-Cast Aluminium Housing



### Road Luminaires

#### LED Flexi Magnum Plus Micro CL2030A Die-Cast Aluminium Housing

IP66 / IK10 / 4000K (Standard) / RAL 9007 / CL1. Class 1 (Standard) / CRI>70 (Standard)

	W (mm)	L (mm)	h (mm)	Item /Box	Average Weight (kg)	Order Code
24/~55W 700mA	234	544	95	1	4.80	L2030A-LED055WNW-ECG
24/~65W 800mA	234	544	95	1	4.90	L2030A-LED065WNW-ECG
24/~70W 925mA	234	544	95	1	4.90	L2030A-LED070WNW-ECG
24/~80W 1050mA	234	544	95	1	4.90	L2030A-LED080WNW-ECG

#### Option Code

-RO. RAL 9007 (Standard)	-CW. Colour Temperature 6500K	-CR7. CRI>70 (Standard)	-COL.1030 (Standard)
-RO. RAL 7047	-CW. Colour Temperature 6000K	-CR8. CRI>80 (Optional)	
-RO. RAL 7021 (Metalic)	-CW. Colour Temperature 5700K	-CR9. CRI>90 (Optional)	
-DIM.0-10V or 1-10V Dimmable Electronic Driver	-CW. Colour Temperature 5000K	-CL1. Class 1 (Standard)	
-ONE. Stand Alone Automation	-NW. Colour Temperature 4000K (Standard)	-CL2. Class 2 (Optional)	
-DAL. DALI Electronic Driver	-WW. Colour Temperature 3000K	-EG. Eco Gold Lumen Package (Standard)	
-IoT. Internet of Things Automation	-WW. Colour Temperature 2700K	-PP. Performance Platinum Lumen Package (Optional)	
-MDBA. Wall Console (Accessories)	-OP. Open System	-SK. Protection Case	

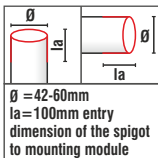
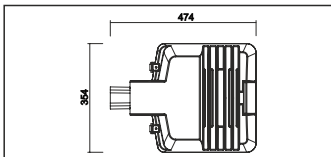
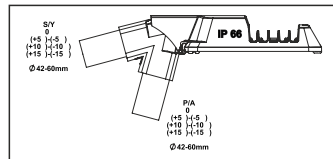
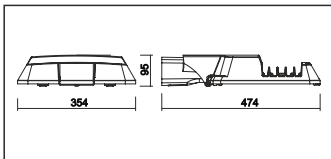
According to your preference, please add the **Option Code** at the end of the **Order Code**  
 Lumens are minimum 115 lm/W maximum 145 lm/W depends on currents and LED quantities.

Standard lens is COL1030. According to your preference, please add the **Optional Lens Code** at the end of the **Order Code**. To see other lens options please see COL options page



# Flexi Magnum Plus Midi CL2040

## LED Die-Cast Aluminium Housing



$\varnothing = 42-60\text{mm}$   
 $l_a = 100\text{mm}$  entry dimension of the spigot to mounting module

### Description

#### Features

- Mounting module is fixed to any post top or side entry spigot from 42 to 60 $\varnothing$  mm.
- Optional 76 $\varnothing$  mm spigot.
- Dustproof and jetproof to IP66.
- Quick, easy and safe installation.
- Complies with Me/Ce/S road lighting standards EN13201.
- Special designed optics maximizes the distance between poles.
- High quality LED modules from approved international suppliers.
- Luminaire lifetime is 50000 hours.
- Thermal-protected, voltage regulated drivers.
- Class I (standard) or class II (optional).
- Low CO<sub>2</sub> emission.
- 14 adjustable tilt angles; 0,  $\pm 5$ ,  $\pm 10$ ,  $\pm 15$  for side entry 0,  $\pm 5$ ,  $\pm 10$ ,  $\pm 15$  for post top.
- Two different tempered glass mounting options; capsule mounting system or hinged openable system.
- Choice of any RAL colour on request.
- Standard RAL 9007.
- Low service and maintenance costs.
- Maximized energy savings.
- The die -cast aluminium body and high quality materials ensure durability.
- Vandal proof and vibration proof.
- The latest led solution for outdoor lighting.
- The right lighting performance for project requirements.
- Available in three different colour rendering index. CRI > 70 (standard), CRI > 80 (optional) or CRI > 90 (optional)
- Easy connect system provides tool-free electrical connection.
- Effective thermal management.
- More light output and service life.
- High energy saving potential.
- The original aesthetic design.
- Max.32 high power white LEDs.
- Available in seven different colour temperatures; 2700K (warm white) 3000K (warm white), 4000K (natural white), 5000K (cool white), 5700K (cool white), 6000K (cool white), 6500K (cool white)
- Good lighting uniformity.
- Mercury free.
- Sharp profile.
- Fully complies RoHS requirements.
- Recyclable ♻️ raw materials.

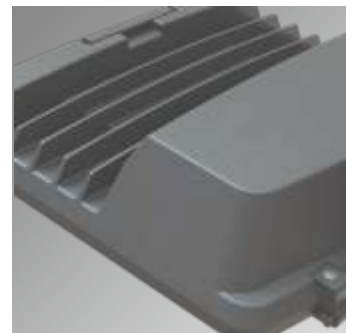
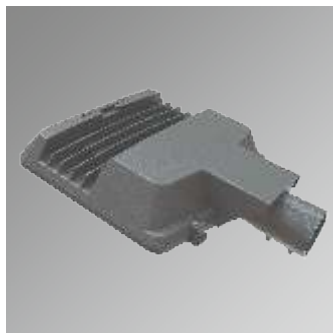
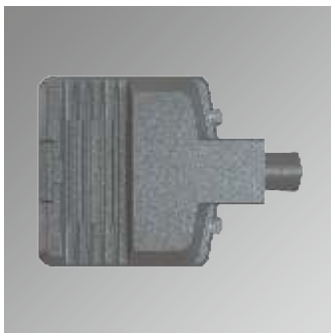
- Driver features;
- Constant current.
  - Harmonic filter protection.
  - Short circuit protection and thermal protection integration.

#### Materials

- Canopy; polyester powder painted non-corrosive high-pressure die-cast aluminium.
- Refractor; tempered 5mm flat glass, easy replaceable.
- Pole mounting module; non-corrosive die-cast aluminium.
- Clips; aluminium clips with stainless steel spring.
- Gasket; silicon.
- Bolt and nuts; stainless steel.
- Pole mounting bolt; hex socket (4 hex key wrenches) or bolt (13 wrenches) stainless steel.
- Pole mounting bolt; 2 item.

#### Applications

- Highways
- Secondary roads
- Residential areas
- Parks
- Car parks
- Environment and security lighting
- Industrial areas
- Roundabouts
- Street and avenue



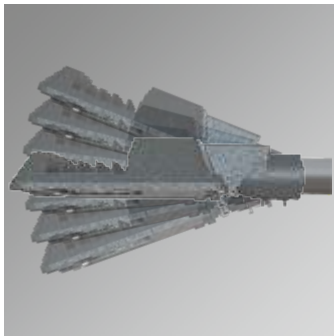


# Flexi Magnum Plus Midi CL2040

## LED Die-Cast Aluminium Housing



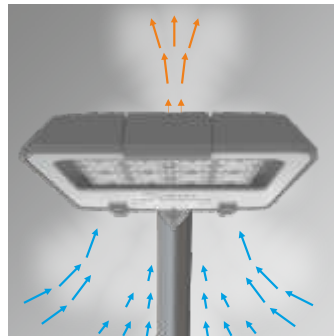
### Side Entry 0°/±5°/±10°/±15°



### Post Top 0°/±5°/±10°/±15°

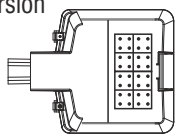


### Efficient Cooling System



### LED Configuration

#### 32 LEDs Version

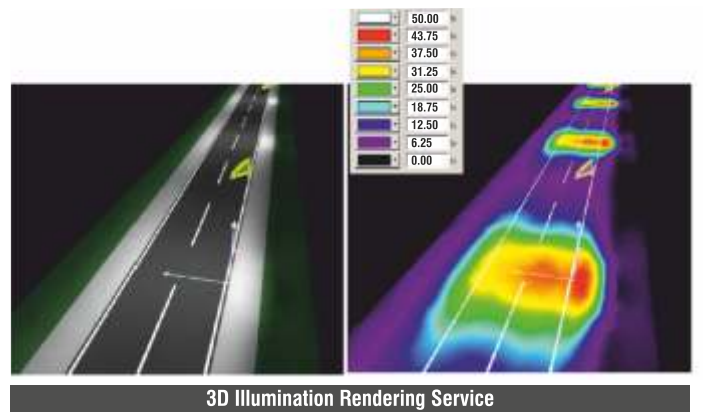


#### Technical Data

- 220-240V AC 50/60 Hz ECG
- Pg 20x1,5 thread
- Dimensions: 354x474x95mm
- Power factor ≥ 0.95
- CRI ≥ 70 (Standard)

#### Standards

- CE, TSE, GOST, RoHS, ENEC, TUV VDE, EN60598-2-3.
- EN62471 Photo biological safety of lamps and lamp systems.
- EN62031 LED modules for general lighting-safety specifications.



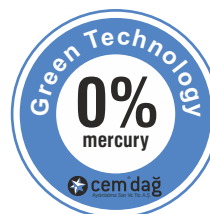
#### CELVIN CHART



#### CRI



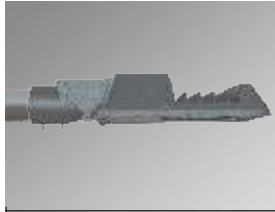
### Glare-Free Optic Lens Design For Visual Comfort





# Flexi Magnum Plus Midi CL2040

## LED Die-Cast Aluminium Housing



### Road Luminaires

## LED Flexi Magnum Plus Midi CL2040 Die-Cast Aluminium Housing

IP66 / IK10 / 4000K (Standard) / RAL 9007 / CL1, Class 1 (Standard) / CRI>70 (Standard)



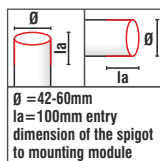
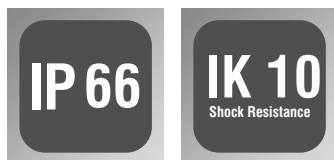
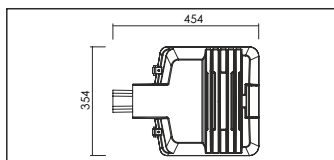
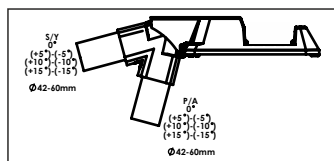
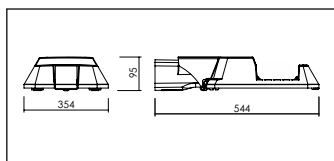
	W (mm)	L (mm)	h (mm)	Item /Box	Average Weight (kg)	Order Code	
32/~62W/ 600mA	354	474	95	1	6.00	L2040-LED062NW-ECG	
32/~72W/ 700mA	354	474	95	1	6.00	L2040-LED072NW-ECG	
32/~82W/ 800mA	354	474	95	1	6.30	L2040-LED082NW-ECG	
32/~100W/ 925mA	354	474	95	1	6.30	L2040-LED100NW-ECG	
32/~110W/1050mA	354	474	95	1	6.30	L2040-LED110NW-ECG	

#### Option Code

-RO. RAL 9007 (Standard)	-CW. Colour Temperature 6500K	-CR7. CRI>70 (Standard)	-COL.1030 (Standard)
-RO. RAL 7047	-CW. Colour Temperature 6000K	-CR8. CRI>80 (Optional)	
-RO. RAL 7021 (Metalic)	-CW. Colour Temperature 5700K	-CR9. CRI>90 (Optional)	
-DIM.0-10V or 1-10V Dimmable Electronic Driver	-CW. Colour Temperature 5000K	-CL1. Class 1 (Standard)	
-ONE. Stand Alone Automation	-NW. Colour Temperature 4000K (Standard)	-CL2. Class 2 (Optional)	
-DAL. DALI Electronic Driver	-WW. Colour Temperature 3000K	-EG. Eco Gold Lumen Package (Standard)	
-IoT. Internet of Things Automation	-WW. Colour Temperature 2700K	-PP. Performance Platinum Lumen Package (Optional)	
-MDBA. Wall Console (Accessories)	-OP. Open System	-SK. Protection Case	

According to your preference, please add the **Option Code** at the end of the **Order Code**  
 Lumens are minimum 115 lm/W maximum 145 lm/W depends on currents and LED quantities.

Standard lens is COL1030. According to your preference, please add the **Optional Lens Code** at the end of the **Order Code**. To see other lens options please see COL options page



## Description

### Features

- Mounting module is fixed to any post top or side entry spigot from 42 to 60mm.
- Optional 76mm spigot.
- Dustproof and jetproof to IP66.
- Quick, easy and safe installation.
- Complies with Me/Ce/S road lighting standards EN13201.
- Special designed optics maximizes the distance between poles.
- High quality LED modules from approved international suppliers.
- Thermal-protected, voltage regulated drivers.
- Class I (standard) or class II (optional).
- Low CO<sub>2</sub> emission.
- 14 adjustable tilt angles; 0, ±5, ±10, ±15 for side entry 0, ±5, ±10, ±15 for post top.
- Two different tempered glass mounting options; capsule mounting system or hinged openable system.
- Choice of any RAL colour on request.
- Standart RAL 9007.
- Low service and maintenance costs.
- Maximized energy savings.
- The die-cast aluminium body and high quality materials ensure durability.
- Vandal proof and vibration proof.
- The latest led solution for outdoor lighting.
- The right lighting performance for project requirements.
- Available in three different colour rendering index. CRI > 70 (standard), CRI > 80 (optional) or CRI > 90 (optional)
- Easy connect system provides tool-free electrical connection.
- Effective thermal management.
- More light output and service life.
- High energy saving potential.
- The original aesthetic design.
- Max. 48 high power white LEDs.
- Available in seven different colour temperatures. 2700K (warm white), 3000K (warm white), 4000K (natural white), 5000K (cool white), 5700K (cool white), 6000K (cool white), 6500K (cool white).
- Good lighting uniformity.
- Mercury free.
- Sharp profile.
- Fully complies RoHS requirements.
- Recyclable raw materials.

### Driver features;

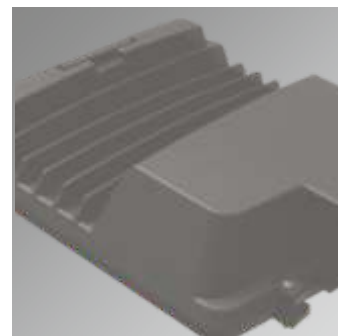
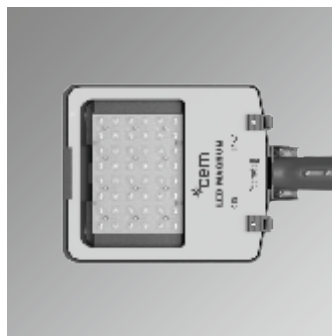
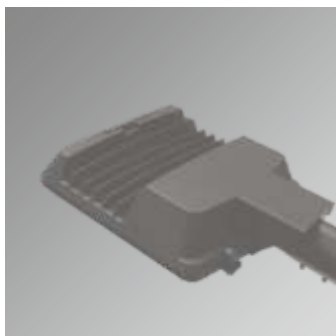
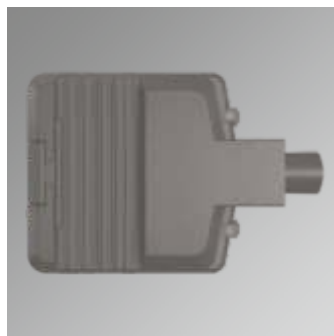
- Constant current.
- Harmonic filter protection.
- Short circuit protection and thermal protection integration.

### Materials

- Canopy; polyester powder painted non-corrosive high-pressure die-cast aluminium.
- Refractor; tempered 5mm flat glass, easy replaceable.
- Pole mounting module; non-corrosive die-cast aluminium.
- Clips; aluminium clips with stainless steel spring.
- Gasket; silicon.
- Bolt and nuts; stainless steel.
- Pole mounting bolt; hex socket (4 hex key wrenches) or bolt (13 wrenches) stainless steel.
- Pole mounting bolt; 2 items.

### Applications

- Highways
- Secondary roads
- Residential areas
- Parks
- Car parks
- Environment and security lighting
- Industrial areas
- Roundabouts
- Street and avenue



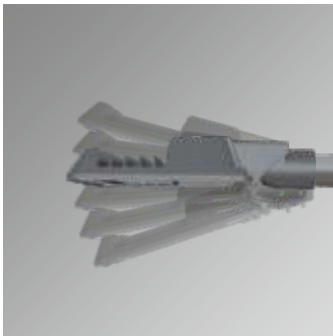


# Flexi Magnum Plus Macro CL2040A

## Die-Cast Aluminium Housing



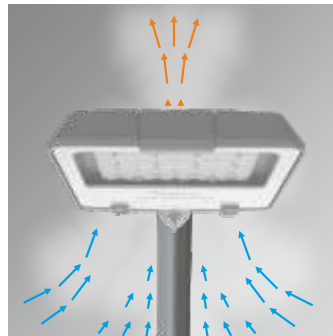
### Side Entry 0°/±5°/±10°/±15°



### Post Top 0°/±5°/±10°/±15°

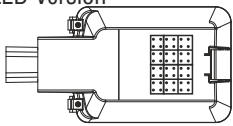


### Efficient Cooling System



### LED Configuration

#### 48 LED Version



#### Technical Data

- 220-240V AC 50/60 Hz ECG
- Pg 20x1,5 thread
- Dimensions: 354x544x90mm
- Power factor ≥ 0.95
- CRI ≥ 70 (Standard)

#### Standards

- CE, TSE, GOST, RoHS, ENEC, TUV VDE, EN60598-2-3.
- EN62471 Photo biological safety of lamps and lamp systems.
- EN62031 LED modules for general lighting-safety specifications.



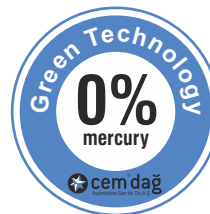
#### CELVIN CHART



#### CRI

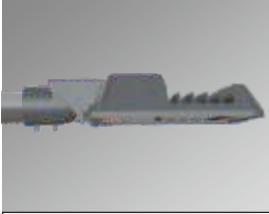


### Glare-Free Optic Lens Design For Visual Comfort



# Flexi Magnum Plus Macro CL2040A

## LED Die-Cast Aluminium Housing



### Road Luminaires

#### LED Flexi Magnum Plus Macro CL2040A Die-Cast Aluminium Housing

IP66 / IK10 / 4000K (Standard) / RAL 9007 / CL1. Class 1 (Standard) / CRI>70 (Standard)



	W (mm)	L (mm)	h (mm)	Item /Box	Average Weight (kg)	Order Code	
48/~90W 600mA	354	544	95	1	6.60	L2040A-LED090NW-ECG	
48/~110W 700mA	354	544	95	1	6.60	L2040A-LED110NW-ECG	
48/~120W 800mA	354	544	95	1	6.60	L2040A-LED120NW-ECG	
48/~155W 925mA	354	544	95	1	6.60	L2040A-LED155NW-ECG	
48/~165W 1050mA	354	544	95	1	6.60	L2040A-LED165NW-ECG	

#### Option Code

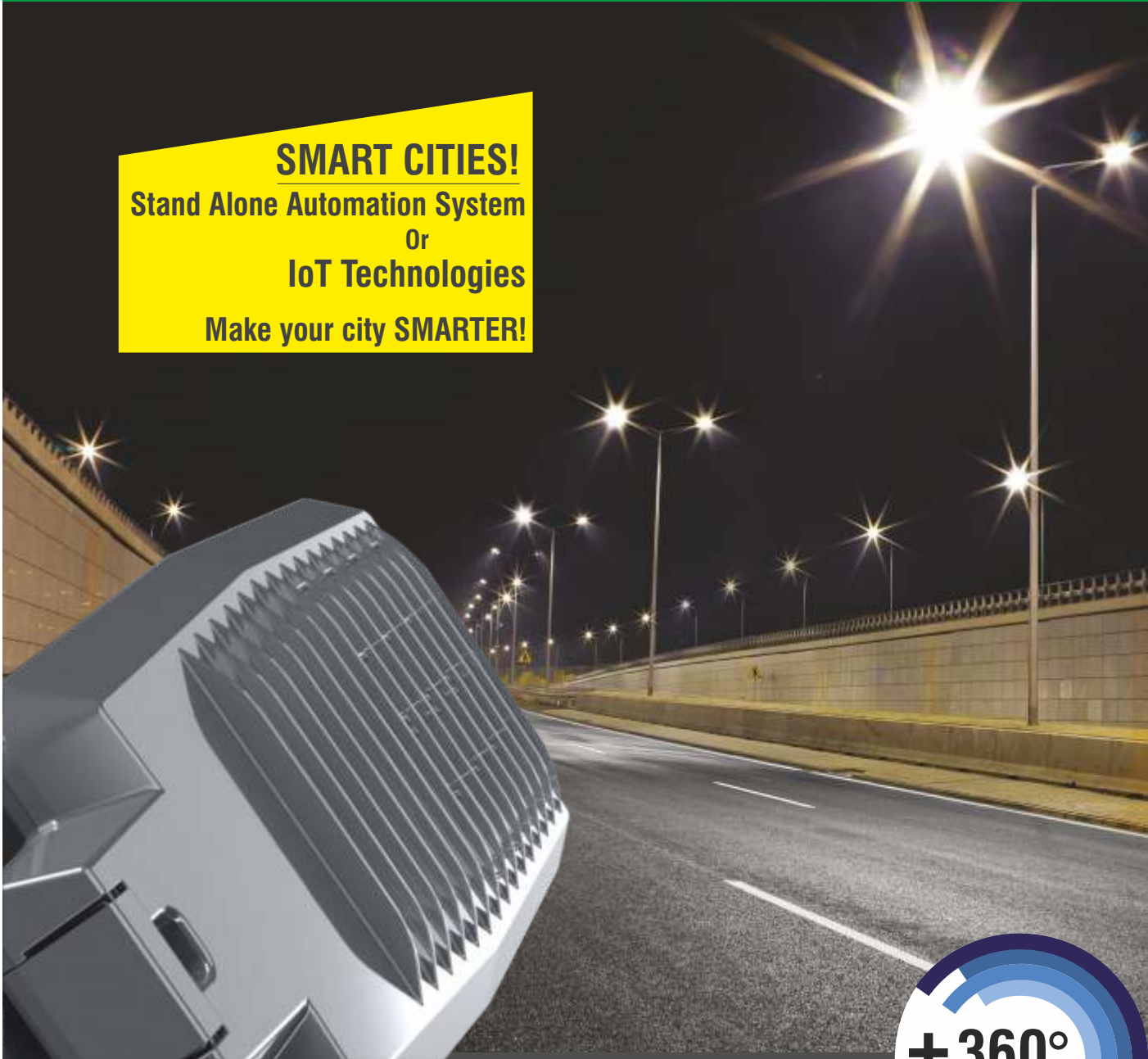
-RO. RAL 9007 (Standard)	-CW. Colour Temperature 6500K	-CR7. CRI>70 (Standard)	-COL.1030 (Standard)
-RO. RAL 7047	-CW. Colour Temperature 6000K	-CR8. CRI>80 (Optional)	
-RO. RAL 7021 (Metalic)	-CW. Colour Temperature 5700K	-CR9. CRI>90 (Optional)	
-DIM.0-10V or 1-10V Dimmable Electronic Driver	-CW. Colour Temperature 5000K	-CL1. Class 1 (Standard)	
-ONE. Stand Alone Automation	-NW. Colour Temperature 4000K (Standard)	-CL2. Class 2 (Optional)	
-DAL. DALI Electronic Driver	-WW. Colour Temperature 3000K	-EG. Eco Gold Lumen Package (Standard)	
-IoT. Internet of Things Automation	-WW. Colour Temperature 2700K	-PP. Performance Platinum Lumen Package (Optional)	
-MDBA. Wall Console (Accessories)	-OP. Open System	-SK. Protection Case	

According to your preference, please add the **Option Code** at the end of the **Order Code**  
Lumens are minimum 115 lm/W maximum 145 lm/W depends on currents and LED quantities.

Standard lens is COL1030. According to your preference, please add the **Optional Lens Code** at the end of the **Order Code**. To see other lens options please see COL options page

LED Magnum Die-Cast Aluminium Housing Series

**SMART CITIES!**  
Stand Alone Automation System  
Or  
IoT Technologies  
Make your city SMARTER!



**LED Magnum**  
Mini CL2015 - Midi CL2020 - Maxi CL2025

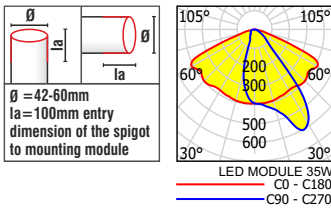
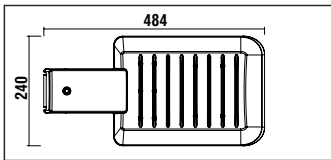
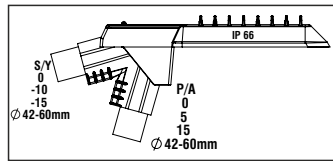
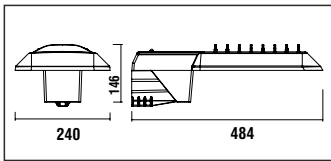
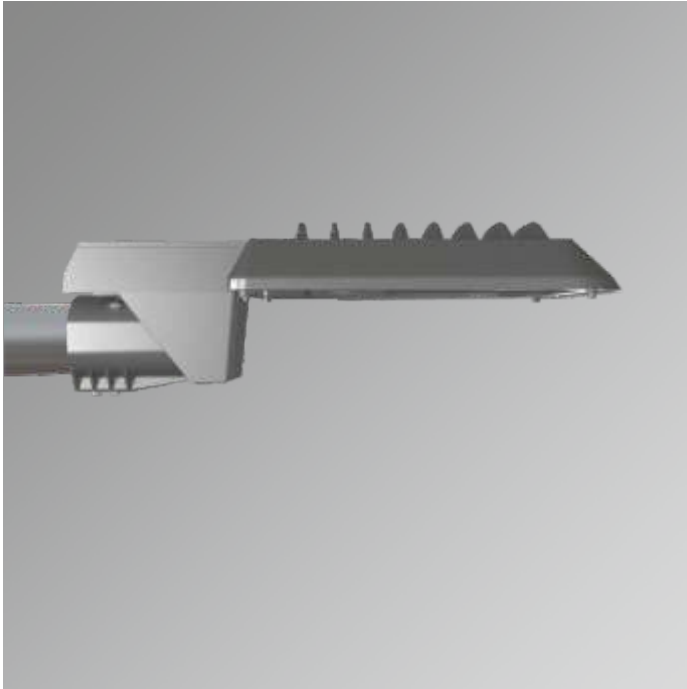
Eco Gold Lumen Package Performance Platinum Lumen Package





# Magnum Mini CL2015

## LED Die-Cast Aluminium Housing



### Description

#### Features

- Mounting module is fixed to any post top or side entry spigot from 42 to 60mm.
- Optional 76mm spigot.
- Dustproof and jetproof to IP66.
- Quick, easy and safe installation.
- Complies with Me/Ce/S road lighting standards EN13201.
- Special designed optics maximizes the distance between poles.
- Design patent from TPE.
- High quality LED modules from approved international suppliers.
- Thermal-protected, voltage regulated drivers.
- Class I (standard) or class II (optional).
- Low CO<sub>2</sub> emission.
- 6 different adjustable mounting tilt angles with step console system; 0, 10, 15 for side entry, 0, 5, 15 for post top.
- Choice of any RAL colour on request.
- Standart RAL 7021 (Metalic).
- Low service and maintenance costs.
- Maximized energy savings.
- The die-cast aluminium body and high quality materials ensure durability.
- Vandal proof and vibration proof.
- The latest led solution for outdoor lighting.
- The right lighting performance for project requirements.
- Available in three different colour rendering index: CRI > 70 (standard), CRI > 80 (optional) or CRI > 90 (optional).
- Easy connect system provides tool-free electrical connection.
- Effective thermal management.
- More light output and service life.
- High energy saving potential.
- The original aesthetic design.
- Maximum 16 high power white LEDs.
- Available in seven different colour temperatures; 2700K (warm white), 3000K (warm white), 4000K (natural white), 5000K (cool white), 5700K (cool white), 6000K (cool white), 6500K (cool white)
- Good lighting uniformity.
- Mercury free.
- Sharp profile.
- Fully complies RoHS requirements.
- Recyclable raw materials.

#### Driver features:

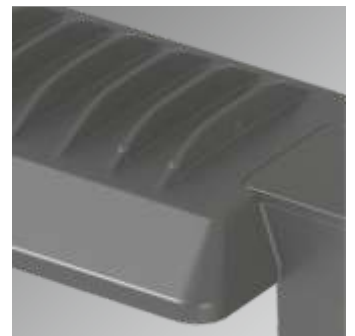
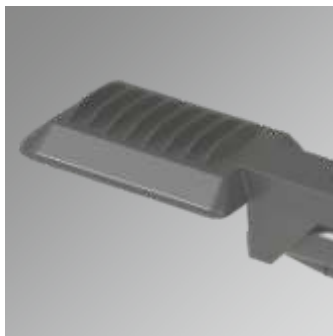
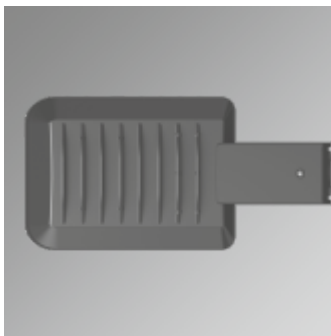
- Constant current.
- Harmonic filter protection.
- Short circuit protection and thermal protection integration.

#### Materials

- Canopy; polyester powder painted non-corrosive high-pressure die-cast aluminium.
- Refractor; tempered 5mm flat glass, easy replaceable.
- Pole mounting module; non-corrosive die-cast aluminium.
- Gasket; silicon.
- Bolt and nuts; stainless steel.
- Pole mounting bolt; hex socket (4 hex key wrenches) or bolt (13 wrenches) stainless steel.
- Pole mounting bolt; 2 items.

#### Applications

- Highways
- Secondary roads
- Residential areas
- Parks
- Car parks
- Environment and security lighting
- Industrial areas
- Roundabouts
- Street and avenue



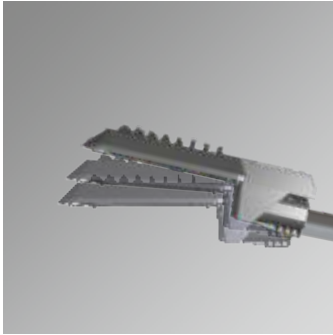


# Magnum Mini CL2015

## Die-Cast Aluminium Housing



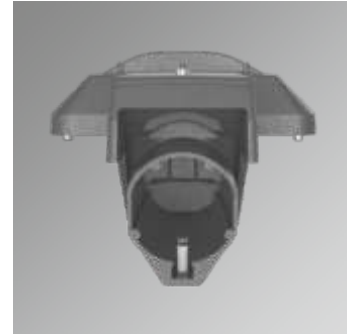
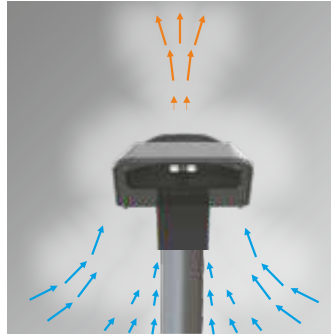
### Side Entry 0°/10°/15°



### Post Top 0°/5°/15°

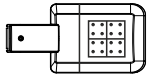


### Efficient Cooling System



### LED Configuration

#### 16 LEDs Version

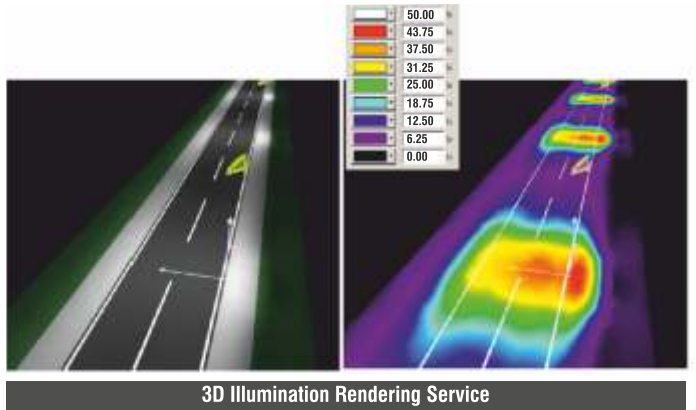


#### Technical Data

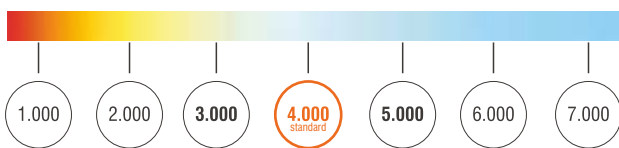
- 220-240V AC 50/60 Hz ECG
- Pg 9 thread
- Dimensions: 240x484x146mm
- Power factor > 0.95
- CRI ≥ 70 (Standard)

#### Standards

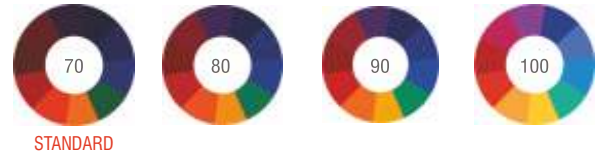
- CE, TSE, GOST, RoHS, ENEC, VDE, EN60598-2-3.
- EN62471 Photo biological safety of lamps and lamp systems.
- EN62031 LED modules for general lighting-safety specifications.



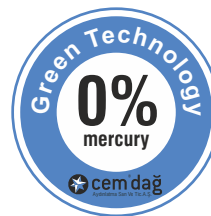
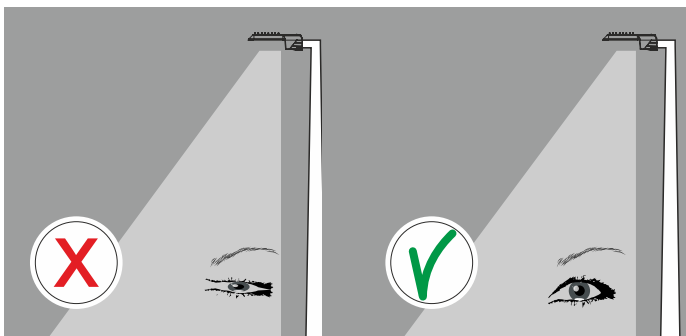
#### CELVIN CHART



#### CRI



### Glare-Free Optic Lens Design For Visual Comfort





# Magnum Mini CL2015

## Die-Cast Aluminium Housing



Products of Cemdag are Made in European Union Custom Union and Declaration of Conformity complies fully with CE Standards.



### Road Luminaires

### LED Magnum Mini CL2015 Die-Cast Aluminium Housing

IP66 / IK10 / 4000K (Standard) / RAL 7021 / CL1. Class 1 (Standard) / CRI>70 (Standard)



	W (mm)	L (mm)	h (mm)	Item /Box	Average Weight (kg)	Order Code	
16/~16W/ 350mA	240	484	146	1	4.00	L2015-LED016NW-ECG	
16/~24W/ 500mA	240	484	146	1	4.00	L2015-LED024NW-ECG	
16/~30W/ 600mA	240	484	146	1	4.00	L2015-LED030NW-ECG	
16/~35W/ 700mA	240	484	146	1	4.00	L2015-LED035NW-ECG	
16/~40W/ 800mA	240	484	146	1	4.00	L2015-LED040NW-ECG	
16/~50W/ 925mA	240	484	146	1	4.00	L2015-LED050NW-ECG	
16/~60W/1050mA	240	484	146	1	4.00	L2015-LED060NW-ECG	

#### Option Code

-RO. RAL 7021 Metallic (Standard)	-CW. Colour Temperature 6500K	-CR7. CRI>70 (Standard)
-RO. RAL 7047	-CW. Colour Temperature 6000K	-CR8. CRI>80 (Optional)
-RO. RAL 9007	-CW. Colour Temperature 5700K	-CR9. CRI>90 (Optional)
-DIM.0-10V or 1-10V Dimmable Electronic Driver	-CW. Colour Temperature 5000K	-CL1. Class 1 (Standard)
-ONE. Stand Alone Automation	-NW. Colour Temperature 4000K (Standard)	-CL2. Class 2 (Optional)
-DAL. DALI Electronic Driver	-WW. Colour Temperature 3000K	-EG. Eco Gold Lumen Package (Standard)
-IoT. Internet of Things Automation	-WW. Colour Temperature 2700K	-PP. Performance Platinum Lumen Package (Optional)
-MDBA. Wall Console (Accessories)	-COL.1030 (Standard)	

According to your preference, please add the **Option Code** at the end of the **Order Code**  
Lumens are minimum 115 lm/W maximum 145 lm/W depends on currents and LED quantities.

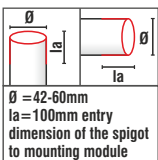
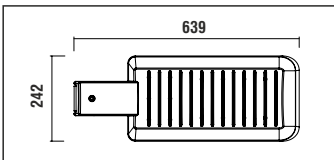
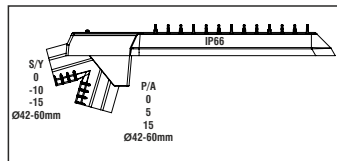
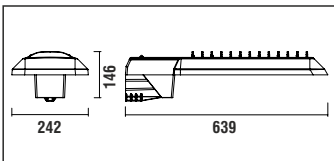
Standard lens is COL1030. According to your preference, please add the **Optional Lens Code** at the end of the **Order Code**. To see other lens options please see COL options page



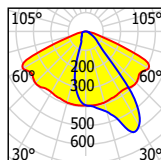


# Magnum Midi CL2020

## Die-Cast Aluminium Housing



Ø = 42-60mm  
la = 100mm entry  
dimension of the spigot  
to mounting module



cd/klm 2 x LED MODULE 70W  
— C0 - C160  
— C30 - C270

### Description

#### Features

- Mounting module is fixed to any post top or side entry spigot from 42 to 60mm.
- Optional 76mm spigot.
- Dustproof and jetproof to IP66.
- Quick, easy and safe installation.
- Complies with Me/Ce/S road lighting standards EN13201.
- Special designed optics maximizes the distance between poles.
- Design patent from TPE.
- High quality LED modules from approved international suppliers.
- Thermal-protected, voltage regulated drivers.
- Class I (standard) or Class II (optional).
- Low CO<sub>2</sub> emission.
- 6 different adjustable mounting tilt angles with step console system; 0, 10, 15 for side entry, 0, 5, 15 for post top.
- Choice of any RAL colour on request.
- Standart RAL 7021 (Metalic).
- Low service and maintenance costs.
- Maximized energy savings.
- The die -cast aluminium body and high quality materials ensure durability.
- Vandal proof and vibration proof.
- The latest led solution for outdoor lighting.
- The right lighting performance for project requirements.
- Available in three different colour rendering index. CRI > 70 (standard), CRI > 80 (optional) or CRI > 90 (optional)
- Easy connect system provides tool-free electrical connection.
- Effective thermal management.
- More light output and service life.
- High energy saving potential.
- The original aesthetic design.
- Max. 32 high power white LEDs.
- Available in seven different colour temperatures; 2700K (warm white), 3000K (warm white), 4000K (natural white), 5000K (cool white), 5700K (cool white), 6000K (cool white), 6500K (cool white)
- Good lighting uniformity.
- Mercury free.
- Sharp profile.
- Fully complies RoHS requirements.
- Recyclable raw materials.

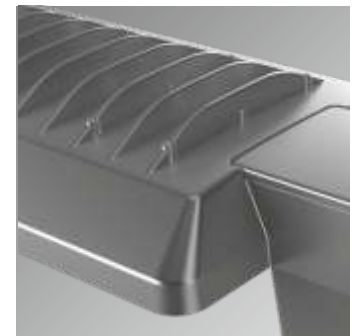
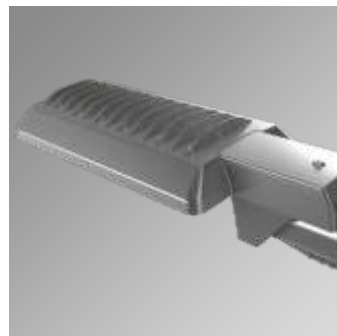
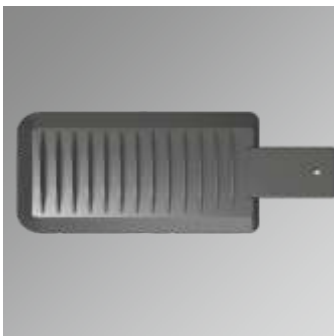
- Driver features;
- Constant current.
- Harmonic filter protection.
- Short circuit protection and thermal protection integration.

#### Materials

- Canopy; polyester powder painted non-corrosive high-pressure die-cast aluminium.
- Refractor; tempered 5mm flat glass, easy replaceable.
- Pole mounting module; non-corrosive die-cast aluminium.
- Gasket; silicon.
- Bolt and nuts; stainless steel.
- Pole mounting bolt; hex socket (4 hex key wrenches) or bolt (13 wrenches) stainless steel.
- Pole mounting bolt; 2 items.

#### Applications

- Highways
- Secondary roads
- Residential areas
- Parks
- Car parks
- Environment and security lighting
- Industrial areas
- Roundabouts
- Street and avenue





# Magnum Midi CL2020

## Die-Cast Aluminium Housing



### Side Entry 0°/10°/15°



### Post Top 0°/5°/15°

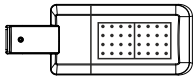


### Efficient Cooling System



### LED Configuration

#### 32 LEDs Version

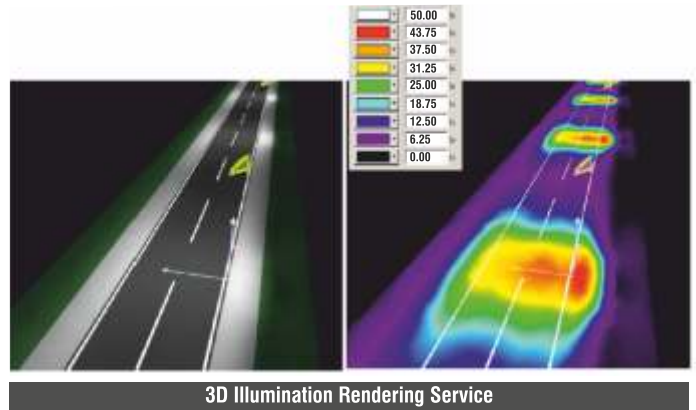


#### Technical Data

- 220-240V AC 50/60 Hz ECG
- Pg 9 thread
- Dimensions: 242x639x146mm
- Power factor  $\geq 0.95$
- CRI  $\geq 70$  (Standard)

#### Standards

- CE, TSE, GOST, RoHS, ENEC, VDE, EN60598-2-3.
- EN62471 Photo biological safety of lamps and lamp systems.
- EN62031 LED modules for general lighting-safety specifications.



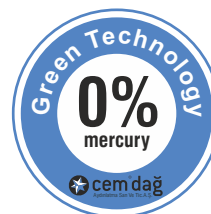
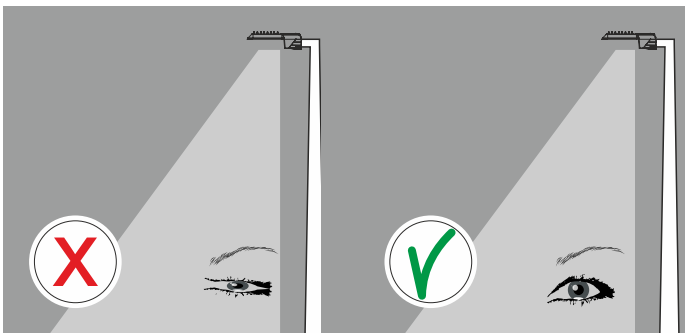
#### CELVIN CHART



#### CRI



### Glare-Free Optic Lens Design For Visual Comfort



# Magnum Midi CL2020

## LED Die-Cast Aluminium Housing



### Road Luminaires

## LED Magnum Midi CL2020 Die-Cast Aluminium Housing

IP66 / IK10 / 4000K (Standard) / RAL 7021 / CL1. Class 1 (Standard) / CRI>70 (Standard)

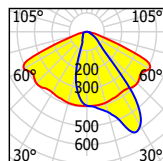
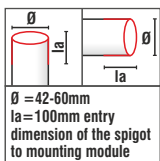
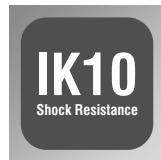
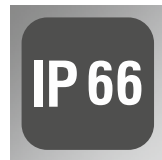
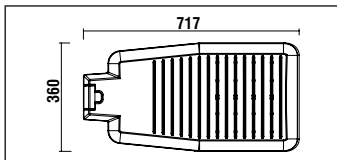
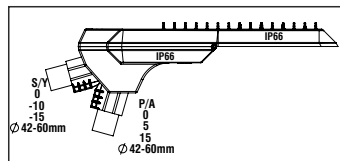
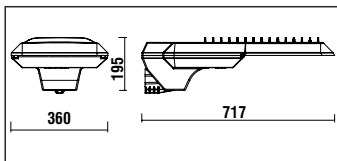


	W (mm)	L (mm)	h (mm)	Item /Box	Average Weight (kg)	Order Code
32/~62W/ 600mA	242	639	146	1	6.30	L2020-LED062NW-ECG
32/~72W/ 700mA	242	639	146	1	6.30	L2020-LED072NW-ECG
32/~82W/ 800mA	242	639	146	1	6.30	L2020-LED082NW-ECG
32/~100W/ 925mA	242	639	146	1	6.30	L2020-LED100NW-ECG
32/~110W/1050mA	242	639	146	1	6.30	L2020-LED110NW-ECG

Option Code		
-RO. RAL 7021 Metallic (Standard)	-CW. Colour Temperature 6500K	-CR7. CRI>70 (Standard)
-RO. RAL 7047	-CW. Colour Temperature 6000K	-CR8. CRI>80 (Optional)
-RO. RAL 9007	-CW. Colour Temperature 5700K	-CR9. CRI>90 (Optional)
-DIM.0-10V or 1-10V Dimmable Electronic Driver	-CW. Colour Temperature 5000K	-CL1. Class 1 (Standard)
-ONE. Stand Alone Automation	-NW. Colour Temperature 4000K (Standard)	-CL2. Class 2 (Optional)
-DAL. DALI Electronic Driver	-WW. Colour Temperature 3000K	-EG. Eco Gold Lumen Package (Standard)
-IoT. Internet of Things Automation	-WW. Colour Temperature 2700K	-PP. Performance Platinum Lumen Package (Optional)
-MDBA. Wall Console (Accessories)	-COL.1030 (Standard)	

According to your preference, please add the **Option Code** at the end of the **Order Code**  
 Lumens are minimum 115 lm/W maximum 145 lm/W depends on currents and LED quantities.

Standard lens is COL1030. According to your preference, please add the **Optional Lens Code** at the end of the **Order Code**. To see other lens options please see COL options page



cd/klm 4 x LED MODULE 70W  
C0 - C180  
C90 - C270

## Description

### Features

- Mounting module is fixed to any post top or side entry spigot from 42 to 60mm.
- Optional 76mm spigot.
- Dustproof and jetproof to IP66.
- Quick, easy and safe installation.
- Complies with Me/Ce/S road lighting standards EN13201.
- Special designed optics maximizes the distance between poles.
- Design patent from TPE.
- High quality LED modules from approved international suppliers.
- Thermal-protected, voltage regulated drivers.
- Class I (standard) or class II (optional).
- Low CO<sub>2</sub> emission.
- 6 different adjustable mounting tilt angles with step console system; 0, 10, 15 for side entry, 0, 5, 15 for post top.
- Choice of any RAL colour on request.
- Standart RAL 7021 (Metalic).
- Low service and maintenance costs.
- Maximized energy savings.
- The die -cast aluminium body and high quality materials ensure durability.
- Vandal proof and vibration proof.
- The latest led solution for outdoor lighting.
- The right lighting performance for project requirements.
- Available in three different colour rendering index. CRI > 70 (standard), CRI > 80 (optional) or CRI > 90 (optional)
- Easy connect system provides tool-free electrical connection.
- Effective thermal management.
- More light output and service life.
- High energy saving potential.
- The original aesthetic design.
- Maximum 64 high power white LEDs.
- Available in seven different colour temperatures; 2700K (warm white) 3000K (warm white), 4000K (natural white), 5000K (cool white), 5700K (cool white), 6000K (cool white), 6500K (cool white)
- Good lighting uniformity.
- Mercury free.
- Sharp profile.
- Fully complies RoHS requirements.
- Recyclable raw materials.

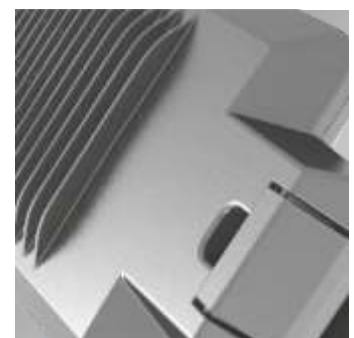
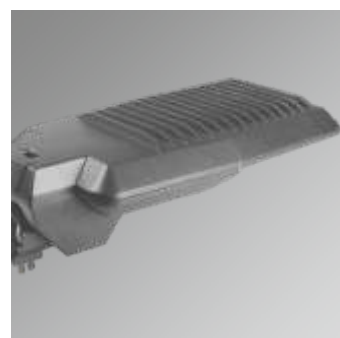
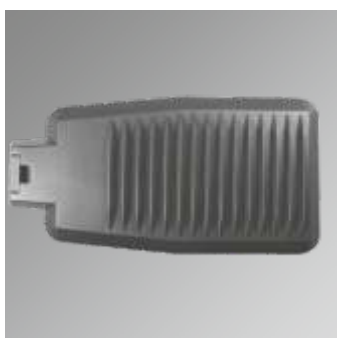
- Driver features;
- Constant current.
- Harmonic filter protection.
- Short circuit protection and thermal protection integration.

### Materials

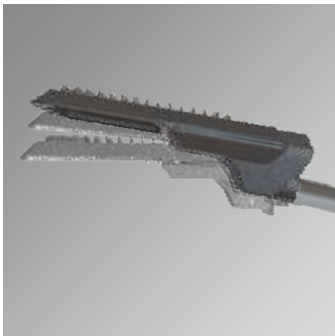
- Canopy; polyester powder painted non-corrosive high-pressure die-cast aluminium.
- Refractor; tempered 5mm flat glass, easy replaceable.
- Pole mounting module; non-corrosive die-cast aluminium.
- Gasket; silicon.
- Bolt and nuts; stainless steel.
- Pole mounting bolt; hex socket (4 hex key wrenches) or bolt (13 wrenches) stainless steel.
- Pole mounting bolt; 2 items.

### Applications

- Highways
- Secondary roads
- Residential areas
- Parks
- Car parks
- Environment and security lighting
- Industrial areas
- Roundabouts
- Street and avenue



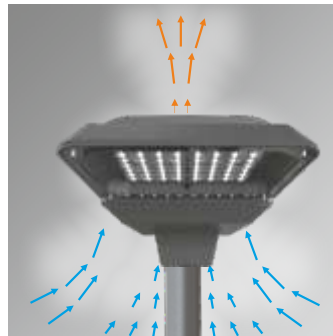
### Side Entry 0°/10°/15°



### Post Top 0°/5°/15°

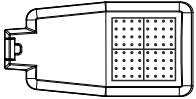


### Efficient Cooling System



### LED Configuration

#### 64 LEDs Version

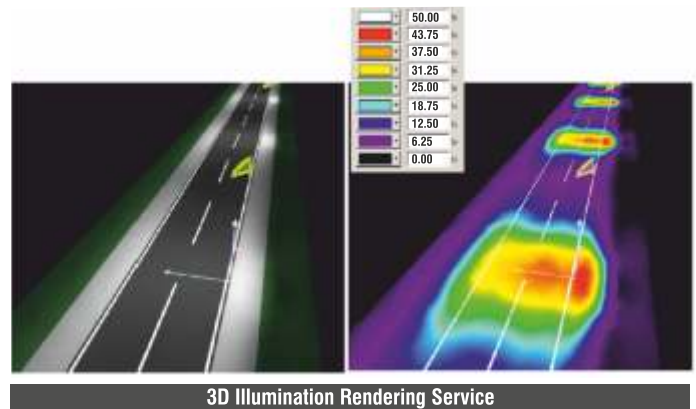


#### Technical Data

- 220-240V AC 50/60 Hz ECG
- 3-way terminal block
- Pg 20x1,5 thread
- Dimensions: 360x717x195mm
- Power factor  $\geq 0.95$
- CRI  $\geq 70$  (Standard)

#### Standards

- CE, TSE, GOST, RoHS, ENEC, VDE, EN60598-2-3.
- EN62471 Photo biological safety of lamps and lamp systems.
- EN62031 LED modules for general lighting-safety specifications.



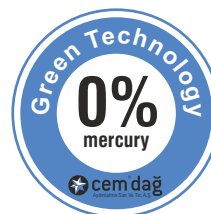
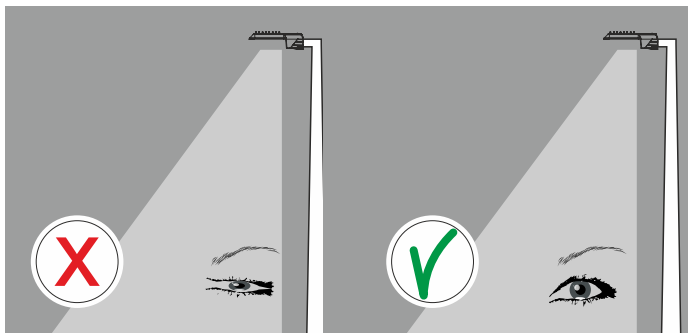
### CELVIN CHART



### CRI



### Glare-Free Optic Lens Design For Visual Comfort



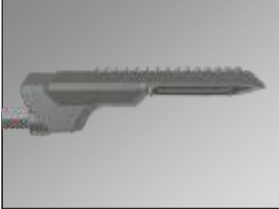


# Magnum Maxi CL2025

## Die-Cast Aluminium Housing



Products of Cemdag are Made in European Union Custom Union and Declaration of Conformity complies fully with CE Standards.



### Road Luminaires

### LED Magnum Maxi CL2025 Die-Cast Aluminium Housing

IP66 / IK10 / 4000K (Standard) / RAL 7021 / CL1. Class 1 (Standard) / CRI>70 (Standard)



	W (mm)	L (mm)	h (mm)	Item /Box	Average Weight (kg)	Order Code	
64/~102W/ 500mA	360	717	195	1	11.20	L2025-LED102NW-ECG	
64/~125W/ 600mA	360	717	195	1	11.20	L2025-LED125NW-ECG	
64/~150W/ 700mA	360	717	195	1	11.20	L2025-LED150NW-ECG	
64/~175W/ 800mA	360	717	195	1	11.20	L2025-LED175NW-ECG	
64/~200W/ 925mA	360	717	195	1	11.20	L2025-LED200NW-ECG	
64/~220W/1050mA	360	717	195	1	11.20	L2025-LED220NW-ECG	

#### Option Code

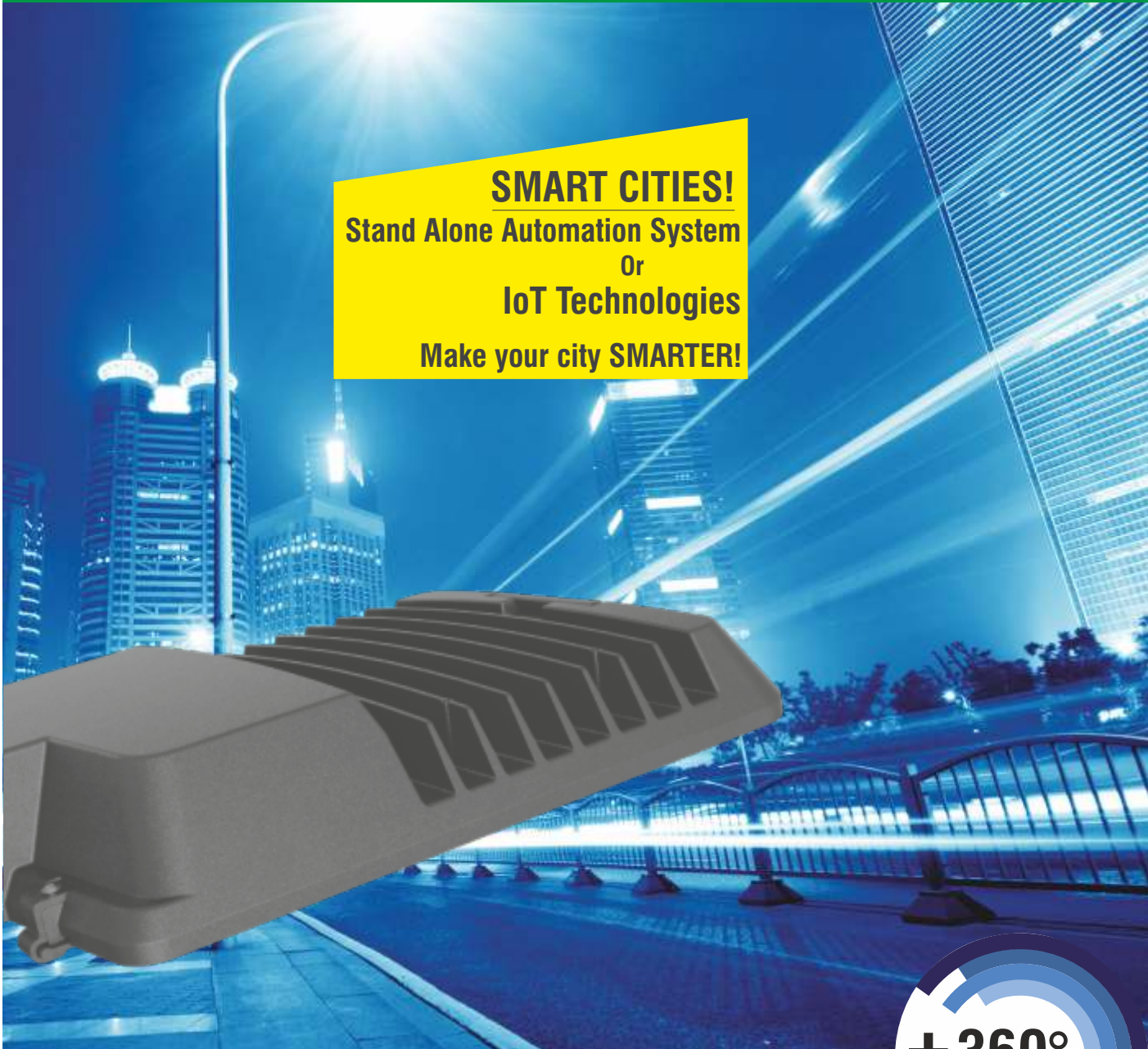
-RO. RAL 7021 Metallic (Standard)	-CW. Colour Temperature 6500K	-CR7. CRI>70 (Standard)
-RO. RAL 7047	-CW. Colour Temperature 6000K	-CR8. CRI>80 (Optional)
-RO. RAL 9007	-CW. Colour Temperature 5700K	-CR9. CRI>90 (Optional)
-DIM.0-10V or 1-10V Dimmable Electronic Driver	-CW. Colour Temperature 5000K	-CL1. Class 1 (Standard)
-ONE. Stand Alone Automation	-NW. Colour Temperature 4000K (Standard)	-CL2. Class 2 (Optional)
-DAL. DALI Electronic Driver	-WW. Colour Temperature 3000K	-EG. Eco Gold Lumen Package (Standard)
-IoT. Internet of Things Automation	-WW. Colour Temperature 2700K	-PP. Performance Platinum Lumen Package (Optional)
-MDBA. Wall Console (Accessories)	-COL.1030 (Standard)	

According to your preference, please add the **Option Code** at the end of the **Order Code**  
Lumens are minimum 115 lm/W maximum 145 lm/W depends on currents and LED quantities.

Standard lens is COL1030. According to your preference, please add the **Optional Lens Code** at the end of the **Order Code**. To see other lens options please see COL options page

LED Axess Magnum Plus Die-Cast Aluminium Housing Series

**SMART CITIES!**  
Stand Alone Automation System  
Or  
IoT Technologies  
Make your city SMARTER!



**LED Axess Magnum Plus**  
Midi CL2035 - Maxi CL2045

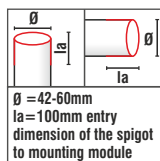
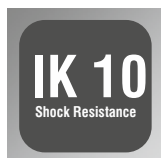
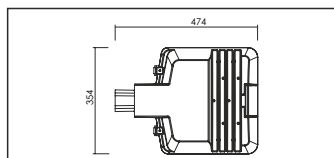
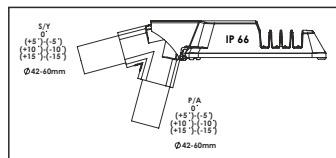
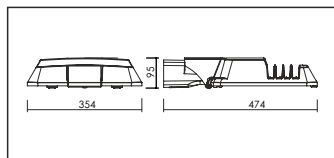
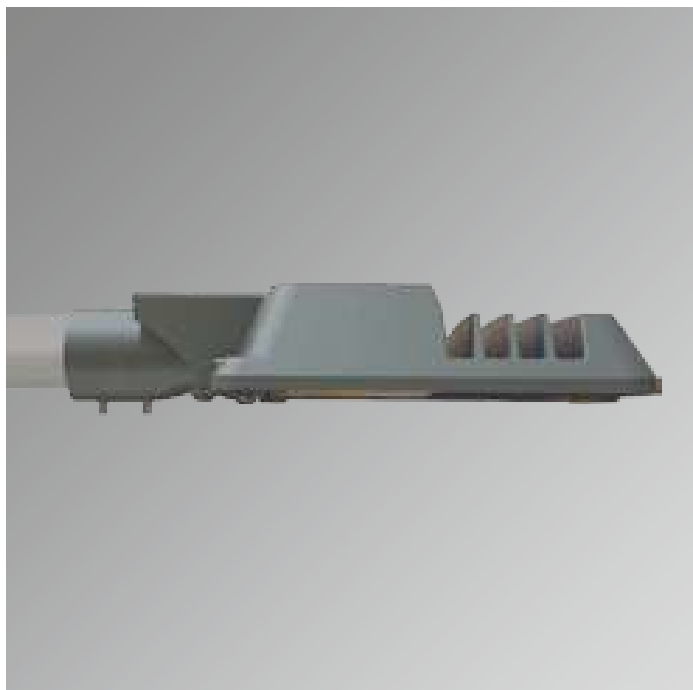
Eco Gold Lumen Package Performance Platinum Lumen Package





# Axess Magnum Plus Midi CL2035

## LED Die-Cast Aluminium Housing



### Description

#### Features

- Mounting module is fixed to any post top or side entry spigot from 42 to 60 mm.
- Optional 76 mm spigot.
- Dustproof and jetproof to IP66.
- Quick, easy and safe installation.
- Complies with Me/Ce/S road lighting standards EN13201.
- Special designed optics maximizes the distance between poles.
- High quality LED modules from approved international suppliers.
- Luminaire lifetime is 50000 hours.
- Thermal-protected, voltage regulated drivers.
- Class I (standard) or class II (optional).
- Low CO<sub>2</sub> emission.
- 14 adjustable tilt angles; 0, ±5, ±10, ±15 for side entry 0, ±5, ±10, ±15 for post top.
- Two different tempered glass mounting options; capsule mounting system or hinged openable system.
- Choice of any RAL colour on request.
- Standart RAL 9007
- Low service and maintenance costs.
- Maximized energy savings.
- The die -cast aluminium body and high quality materials ensure durability.
- Vandal proof and vibration proof.
- The latest led solution for outdoor lighting.
- The right lighting performance for project requirements.
- Available in three different colour rendering index. CRI > 70 (standard), CRI > 80 (optional) or CRI > 90 (optional).
- Easy connect system provides tool-free electrical connection.
- Effective thermal management.
- More light output and service life.
- High energy saving potential.
- The original aesthetic design.
- Maximum 32 high power white LEDs.
- Available in seven different colour temperatures; 2700K (warm white), 3000K (warm white), 4000K (natural white), 5000K (cool white), 5700K (cool white), 6000K (cool white), 6500K (cool white)
- Good lighting uniformity.
- Mercury free.
- Sharp profile.
- Fully complies RoHS requirements.
- Recyclable raw materials.

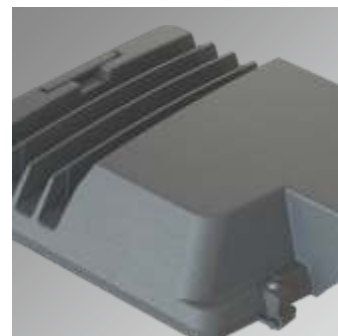
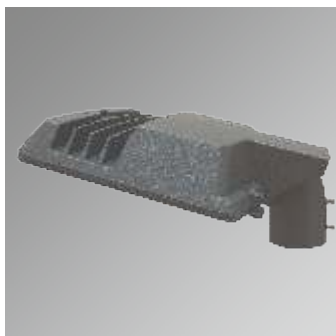
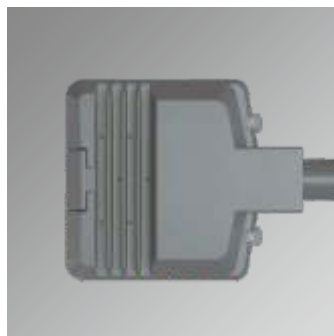
- Driver features;
- Constant current.
  - Harmonic filter protection.
  - Short circuit protection and thermal protection integration.

#### Materials

- Canopy; polyester powder painted non-corrosive high-pressure die-cast aluminium.
- Refractor; tempered 5mm flat glass, easy replacable.
- Pole mounting module; non-corrosive die-cast aluminium.
- Clips; aluminium clips with stainless steel spring.
- Gasket; silicon.
- Bolt and nuts; stainless steel.
- Pole mounting bolt; hex socket (4 hex key wrenches) or bolt (13 wrenches) stainless steel.
- Pole mounting bold; 2 item.

#### Applications

- Highways
- Secondray roads
- Residential areas
- Parks
- Car parks
- Environment and security lighting
- Industrial areas
- Roundabouts
- Street and avenue





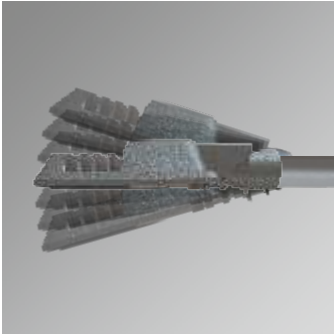


# Axess Magnum Plus Midi CL2035

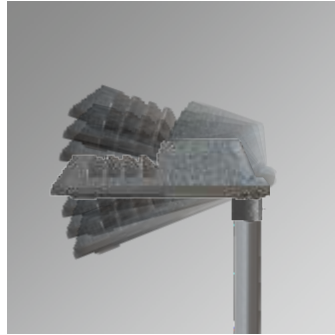
## Die-Cast Aluminium Housing



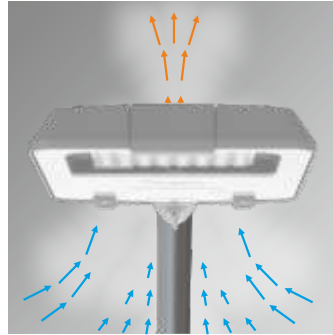
### Side Entry 0°/±5°/±10°/±15°



### Post Top 0°/±5°/±10°/±15°

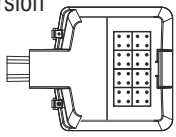


### Efficient Cooling System



### LED Configuration

#### 32 LEDs Version

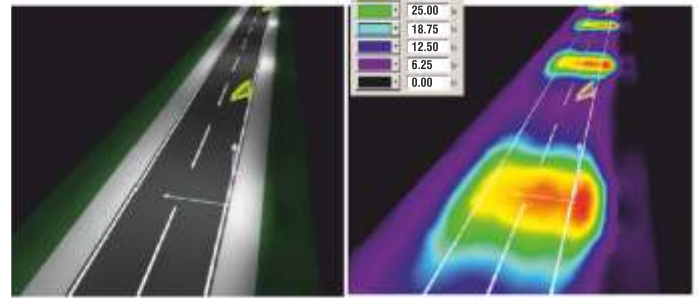
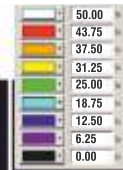


#### Technical Data

- 220-240V AC 50/60 Hz ECG
- Pg 20x1,5 thread
- Dimensions: 354x474x95mm
- Power factor ≥ 0.95
- CRI ≥ 70 (Standard)

#### Standards

- CE, TSE, GOST, RoHS, ENEC, VDE, EN60598-2-3.
- EN62471 Photo biological safety of lamps and lamp systems.
- EN62031 LED modules for general lighting-safety specifications.



3D Illumination Rendering Service

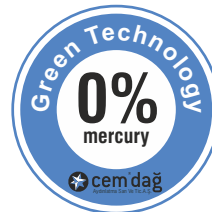
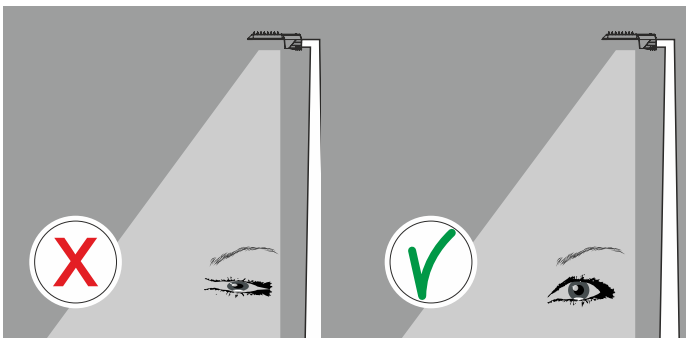
#### CELVIN CHART



#### CRI



### Glare-Free Optic Lens Design For Visual Comfort





# Axess Magnum Plus Midi CL2035

## Die-Cast Aluminium Housing



Products of Cemdag are Made in European Union Custom Union and Declaration of Conformity complies fully with CE Standards.



### Road Luminaires

### LED Axess Magnum Plus Midi CL2035 Die-Cast Aluminium Housing

IP66 / IK10 / 4000K (Standard) / RAL 7021 / CL1. Class 1 (Standard) / CRI>70 (Standard)



	W (mm)	L (mm)	h (mm)	Item /Box	Average Weight (kg)	Order Code	
32/~62W/ 600mA	354	474	95	1	6.40	L2035-LED062NW-ECG	
32/~72W/ 700mA	354	474	95	1	6.40	L2035-LED072NW-ECG	
32/~82W/ 800mA	354	474	95	1	6.40	L2035-LED082NW-ECG	
32/~100W/ 925mA	354	474	95	1	6.40	L2035-LED100NW-ECG	
32/~110W/1050mA	354	474	95	1	6.40	L2035-LED110NW-ECG	

#### Option Code

-RO. RAL 7021 Metallic	-CW. Colour Temperature 6500K	-CR7. CRI>70 (Standard)	-COL.1030 (Standard)
-RO. RAL 7047	-CW. Colour Temperature 6000K	-CR8. CRI>80 (Optional)	
-RO. RAL 9007 (Standard)	-CW. Colour Temperature 5700K	-CR9. CRI>90 (Optional)	
-DIM.0-10V or 1-10V Dimmable Electronic Driver	-CW. Colour Temperature 5000K	-CL1. Class 1 (Standard)	
-ONE. Stand Alone Automation	-NW. Colour Temperature 4000K (Standard)	-CL2. Class 2 (Optional)	
-DAL. DALI Electronic Driver	-WW. Colour Temperature 3000K	-EG. Eco Gold Lumen Package (Standard)	
-IoT. Internet of Things Automation	-WW. Colour Temperature 2700K	-PP. Performance Platinum Lumen Package (Optional)	
-MDBA. Wall Console (Accessories)	-CM. Capsule Version System	-SK. Protection Case	

According to your preference, please add the **Option Code** at the end of the **Order Code**.  
Lumens are minimum 115 lm/W maximum 145 lm/W depends on currents and LED quantities.

Standard lens is COL1030. According to your preference, please add the **Optional Lens Code** at the end of the **Order Code**. To see other lens options please see COL options page



# Axess Magnum Plus Maxi CL2045

## Die-Cast Aluminium Housing



### Description

#### Features

- Mounting module is fixed to any post top or side entry spigot from 42 to 60 mm.
- Optional 76 mm spigot.
- Dustproof and jetproof to IP66.
- Quick, easy and safe installation.
- Complies with Me/Ce/S road lighting standards EN13201.
- Special designed optics maximizes the distance between poles.
- High quality LED modules from approved international suppliers.
- Thermal-protected, voltage regulated drivers.
- Class I (standard) or class II (optional).
- Low CO<sub>2</sub> emission.
- 14 Adjustable tilt angles; 0, ±5, ±10, ±15 for side entry 0, ±5, ±10, ±15 for post top.
- Two different tempered glass mounting options; capsule mounting system or hinged openable system.
- Choice of any RAL colour on request.
- Standart RAL 9007
- Low service and maintenance costs.
- Maximized energy savings.
- The die -cast aluminium body and high quality materials ensure durability.
- Vandal proof and vibration proof.
- The latest led solution for outdoor lighting.
- The right lighting performance for project requirements.
- Available in three different colour rendering index. CRI > 70 (standard), CRI > 80 (optional) or CRI > 90 (optional)
- Easy connect system provides tool-free electrical connection.
- Effective thermal management.
- More light output and service life.
- High energy saving potential.
- The original aesthetic design.
- Max. 64 high power white LEDs.
- Available in seven different colour temperatures. 2700K (warm white), 3000K (warm white), 4000K (natural white), 5000K (cool white), 5700K (cool white), 6000K (cool white), 6500K (cool white)
- Good lighting uniformity.
- Mercury free.
- Sharp profile.
- Fully complies RoHS requirements.
- Recyclable ♻️ raw materials.

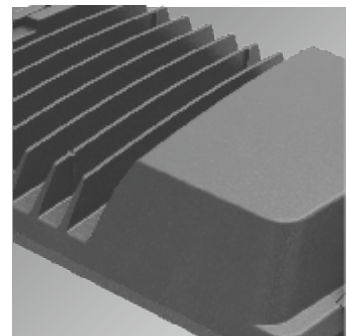
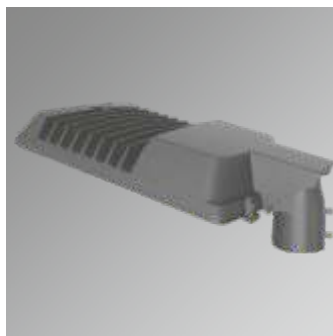
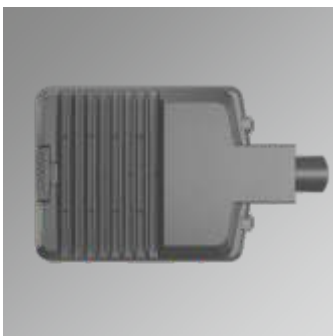
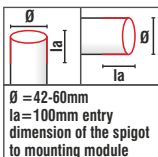
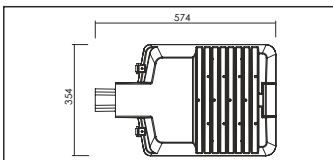
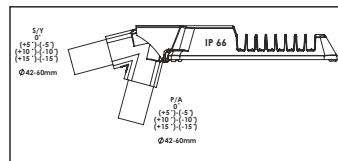
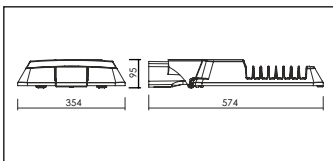
- Driver features;
- Constant current.
  - Harmonic filter protection.
  - Short circuit protection and thermal protection integration.

#### Materials

- Canopy; polyester powder painted non-corrosive high-pressure die-cast aluminium.
- Refractor; tempered 5mm flat glass, easy replaceable.
- Pole mounting module; non-corrosive die-cast aluminium.
- Clips; aluminium clips with stainless steel spring.
- Gasket; silicon.
- Bolt and nuts; stainless steel.
- Pole mounting bolt; hex socket (4 hex key wrenches) or bolt (13 wrenches) stainless steel.
- Pole mounting bolt; 2 item.

#### Applications

- Highways
- Secondray roads
- Residential areas
- Parks
- Car parks
- Environment and security lighting
- Industrial areas
- Roundabouts
- Street and avenue



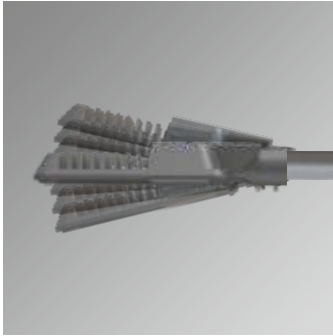


# Axess Magnum Plus Maxi CL2045

## LED Die-Cast Aluminium Housing



### Side Entry 0°/±5°/±10°/±15°



### Post Top 0°/±5°/±10°/±15°

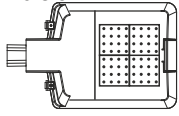


### Efficient Cooling System



### LED Configuration

#### 64 LEDs Version

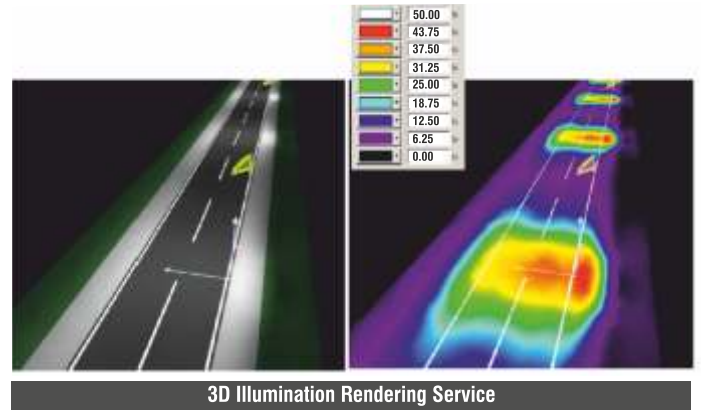


#### Technical Data

- 220-240V AC 50/60 Hz ECG
- Pg 20x1,5 thread
- Dimensions: 354x574x95mm
- Power factor > 0.95
- CRI > 70 (Standard)

#### Standards

- CE, TSE, GOST, RoHS, ENEC, VDE, EN60598-2-3.
- EN62471 Photo biological safety of lamps and lamp systems.
- EN62031 LED modules for general lighting-safety specifications.



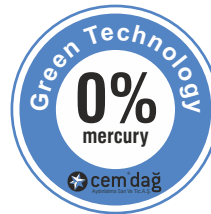
### CELVIN CHART



### CRI



### Glare-Free Optic Lens Design For Visual Comfort





# Axess Magnum Plus Maxi CL2045

## Die-Cast Aluminium Housing



Products of Cemdag are Made in European Union Custom Union and Declaration of Conformity complies fully with CE Standards.



### Road Luminaires

### LED Axess Magnum Plus Maxi CL2045 Die-Cast Aluminium Housing

IP66 / IK10 / 4000K (Standard) / RAL 9007 / CL1. Class 1 (Standard) / CRI>70 (Standard)



	W (mm)	L (mm)	h (mm)	Item /Box	Average Weight (kg)	Order Code	
64/~102W/ 500mA	354	574	95	1	9.00	L2045-LED102NW-ECG	
64/~125W/ 600mA	354	574	95	1	9.00	L2045-LED125NW-ECG	
64/~150W/ 700mA	354	574	95	1	9.00	L2045-LED150NW-ECG	
64/~175W/ 800mA	354	574	95	1	9.00	L2045-LED175NW-ECG	
64/~200W/ 925mA	354	574	95	1	9.00	L2045-LED200NW-ECG	
64/~220W/ 1050mA	354	574	95	1	9.00	L2045-LED220NW-ECG	

#### Option Code

-RO. RAL 9007 (Standard)	-CW. Colour Temperature 6500K	-Cr7. CRI>70 (Standard)	-COL.1030 (Standard)
-RO. RAL 7047	-CW. Colour Temperature 6000K	-CR8. CRI>80 (Optional)	
-RO. RAL 7021 (Metalic)	-CW. Colour Temperature 5700K	-CR9. CRI>90 (Optional)	
-DIM.0-10V or 1-10V Dimmable Electronic Driver	-CW. Colour Temperature 5000K	-CL1. Class 1 (Standard)	
-ONE. Stand Alone Automation	-NW. Colour Temperature 4000K (Standard)	-CL2. Class 2 (Optional)	
-DAL. DALI Electronic Driver	-WW. Colour Temperature 3000K	-EG. Eco Gold Lumen Package (Standard)	
-IoT. Internet of Things Automation	-WW. Colour Temperature 2700K	-PP Performance Platinum Lumen Package (Optional)	
-MDBA. Wall Console (Accessories)	-CM. Capsule Version System	-SK. Protection Case	

According to your preference, please add the **Option Code** at the end of the **Order Code**  
Lumens are minimum 115 lm/W maximum 145 lm/W depends on currents and LED quantities.

Standard lens is COL1030. According to your preference, please add the **Optional Lens Code** at the end of the **Order Code**. To see other lens options please see COL options page

 LED Falcon Die-Cast Aluminium Housing Series



**SMART CITIES!**  
Stand Alone Automation System  
Or  
IoT Technologies  
Make your city SMARTER!



**LED Falcon**

CL2070 S - CL2075 M - CL2080 L

 Eco Gold Lumen Package  Performance Platinum Lumen Package





# Falcon Mini CL2070 S

## LED Die-Cast Aluminium Housing



### Description

#### Features

- Mounting module is fixed to any post top or side entry spigot from 42 to 60 mm.
- Optional 76 mm spigot.
- Dustproof and jetproof to IP66.
- Quick, easy and safe installation.
- Complies with Me/Ce/S road lighting standards EN13201.
- Special designed optics maximizes the distance between poles.
- High quality LED modules from approved international suppliers.
- Thermal-protected, voltage regulated drivers.
- Class I (standard) or class II (optional).
- Low CO<sub>2</sub> emission.
- 14 adjustable tilt angles; 0, ±5, ±10, ±15 for side entry 0, ±5, ±10, ±15 for post top.
- Choice of any RAL colour on request.
- Standart RAL 7021 (Metalic).
- Low service and maintenance costs.
- Maximized energy savings.
- The die -cast aluminium body and high quality materials ensure durability.
- Vandal proof and vibration proof.
- The latest led solution for outdoor lighting.
- The right lighting performance for project requirements.
- Available in three different colour rendering index. CRI > 70 (standard), CRI > 80 (optional) or CRI > 90 (optional).
- Easy connect system provides tool-free electrical connection.
- Effective thermal management.
- More light output and service life.
- High energy saving potential.
- The original aesthetic design.
- Maximum 16 high power white LEDs.
- Available in seven different colour temperatures; 2700K (warm white), 3000K (warm white), 4000K (natural white), 5000K (cool white), 5700K (cool white), 6000K (cool white), 6500K (cool white)
- Good lighting uniformity.
- Mercury free.
- Sharp profile.
- Fully complies RoHS requirements.
- Recyclable raw materials.

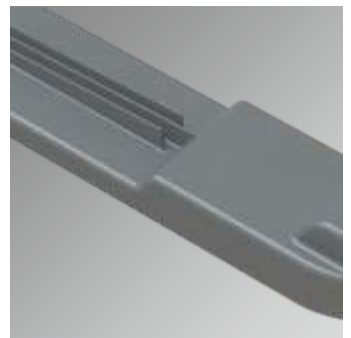
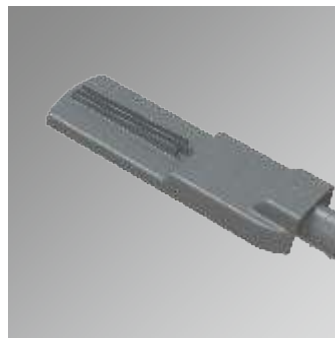
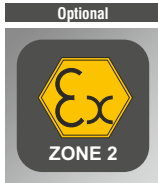
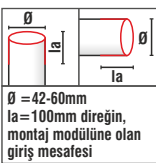
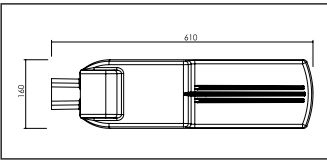
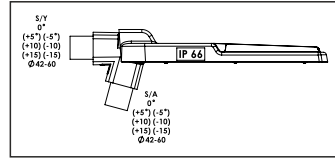
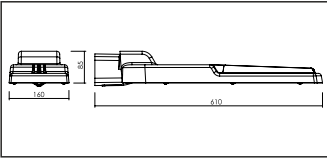
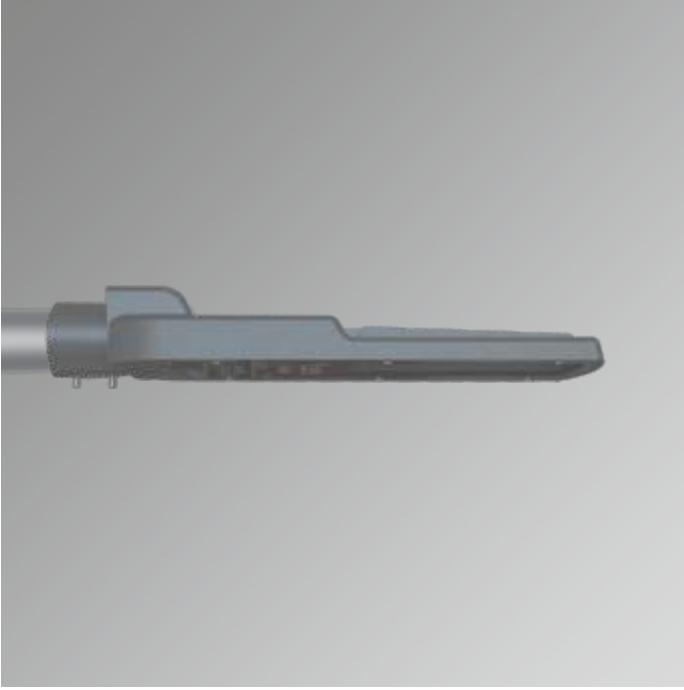
- Driver features;
- Constant current.
  - Harmonic filter protection.
  - Short circuit protection and thermal protection integration.

#### Materials

- Canopy; polyester powder painted non-corrosive high-pressure die-cast aluminium.
- Refractor; tempered 5mm flat glass, easy replaceable.
- Pole mounting module; non-corrosive die-cast aluminium.
- Gasket; silicon.
- Bolt and nuts; stainless steel.
- Pole mounting bolt; hex socket (4 hex key wrenches) or bolt (13 wrenches) stainless steel.
- Pole mounting bolt; 2 items.

#### Applications

- Highways
- Secondary roads
- Residential areas
- Parks
- Car parks
- Environment and security lighting
- Industrial areas
- Roundabouts
- Street and avenue



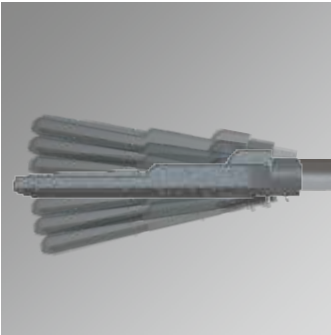


# Falcon Mini CL2070 S

## Die-Cast Aluminium Housing



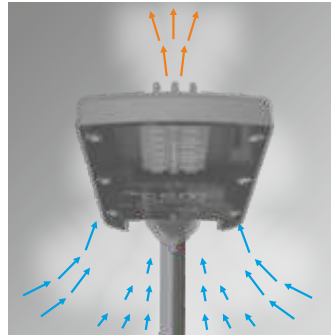
### Side Entry 0°/±5°/±10°/±15°



### Post Top 0°/±5°/±10°/±15°

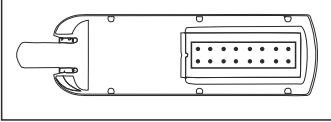


### Efficient Cooling System



### LED Configuration

#### 16 LED Version



Optional

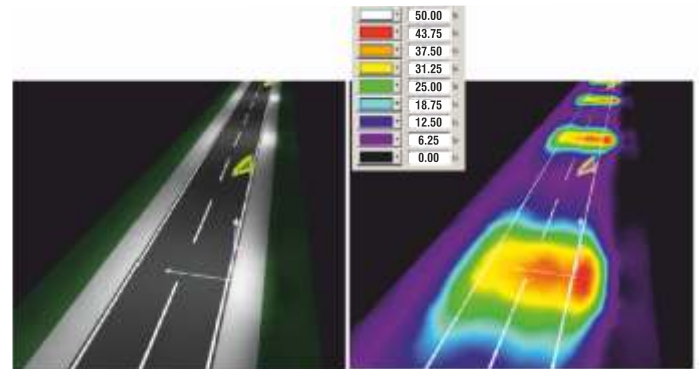


#### Technical Data

- 220-240V AC 50/60 Hz ECG
- Pg 9 thread
- Dimensions: 160x610x85mm
- Power factor ≥ 0.95
- CRI ≥ 70 (Standard)

#### Standards

- CE, TSE, GOST, RoHS, ENEC, TUV
- VDE, EN60598-2-3.
- EN62471 Photo biological safety of lamps and lamp systems.
- EN62031 LED modules for general lighting-safety specifications.



3D Illumination Rendering Service

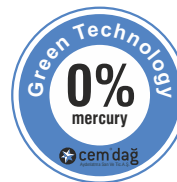
### CELVIN CHART



### CRI



### Glare-Free Optic Lens Design For Visual Comfort





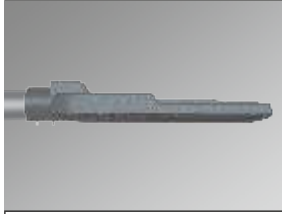


# Falcon Mini CL2070 S

## Die-Cast Aluminium Housing



Products of Cemdag are Made in European Union Custom Union and Declaration of Conformity complies fully with CE Standards.



### Road Luminaires

#### LED Falcon Mini CL2070 S Die-Cast Aluminium Housing

IP66 / IK10 / 4000K (Standard) / RAL 7021 / CL1. Class 1 (Standard) / CRI>70 (Standard)



	W (mm)	L (mm)	h (mm)	Item /Box	Average Weight (kg)	Order Code	
16/~16W 350mA	160	610	85	1	3.30	L2070-LED016NW-ECG	
16/~24W 500mA	160	610	85	1	3.30	L2070-LED024NW-ECG	
16/~30W 600mA	160	610	85	1	3.30	L2070-LED030NW-ECG	
16/~35W 700mA	160	610	85	1	3.30	L2070-LED035NW-ECG	
16/~40W 800mA	160	610	85	1	3.30	L2070-LED040NW-ECG	
16/~50W 925mA	160	610	85	1	3.30	L2070-LED050NW-ECG	
16/~60W 1050mA	160	610	85	1	3.30	L2070-LED060NW-ECG	

#### Option Code

-RO. RAL 7021 Metallic (Standard)	-CW. Colour Temperature 6500K	-CR7. CRI>70 (Standard)
-RO. RAL 7047	-CW. Colour Temperature 6000K	-CR8. CRI>80 (Optional)
-RO. RAL 9007	-CW. Colour Temperature 5700K	-CR9. CRI>90 (Optional)
-DIM.0-10V or 1-10V Dimmable Electronic Driver	-CW. Colour Temperature 5000K	-CL1. Class 1 (Standard)
-ONE. Stand Alone Automation	-NW. Colour Temperature 4000K (Standard)	-CL2. Class 2 (Optional)
-DAL. DALI Electronic Driver	-WW. Colour Temperature 3000K	-EG. Eco Gold Lumen Package (Standard)
-IoT. Internet of Things Automation	-WW. Colour Temperature 2700K	-PP. Performance Platinum Lumen Package (Optional)
-MDBA. Wall Console (Accessories)	-COL.1030 (Standard)	-EX.Atex (Optional)

According to your preference, please add the **Option Code** at the end of the **Order Code**  
 Lumens are minimum 115 lm/W maximum 145 lm/W depends on currents and LED quantities.

Standard lens is COL1030. According to your preference, please add the **Optional Lens Code** at the end of the **Order Code**. To see other lens options please see COL options page

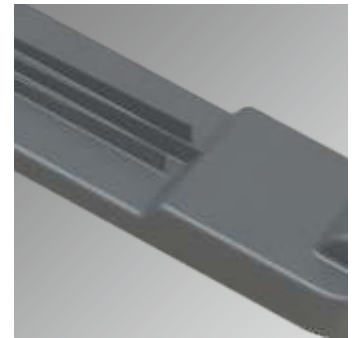
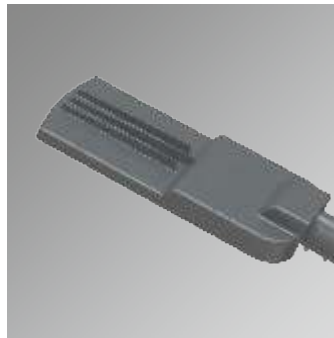
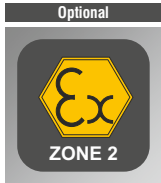
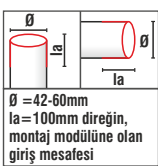
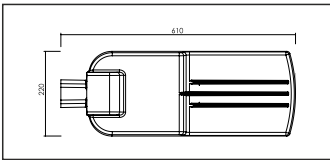
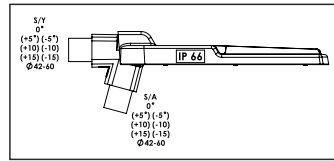
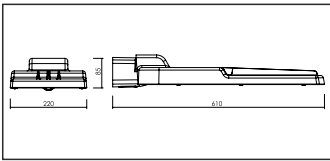
#### Optional





# Falcon Midi CL2075 M

## LED Die-Cast Aluminium Housing



### Description

#### Features

- Mounting module is fixed to any post top or side entry spigot from 42 to 60mm.
- Optional 76mm spigot.
- Dustproof and jetproof to IP66.
- Quick, easy and safe installation.
- Complies with Me/Ce/S road lighting standards EN13201.
- Special designed optics maximizes the distance between poles.
- High quality LED modules from approved international suppliers.
- Thermal-protected, voltage regulated drivers.
- Class I (standard) or class II (optional).
- Low CO<sub>2</sub> emission.
- 14 adjustable tilt angles; 0, ±5, ±10, ±15 for side entry 0, ±5, ±10, ±15 for post top.
- Choice of any RAL colour on request.
- Standart RAL 7021 (Metalic).
- Low service and maintenance costs.
- Maximized energy savings.
- The die -cast aluminium body and high quality materials ensure durability.
- Vandal proof and vibration proof.
- The latest led solution for outdoor lighting.
- The right lighting performance for project requirements.
- Available in three different colour rendering index. CRI > 70 (standard), CRI > 80 (optional) or CRI > 90 (optional).
- Easy connect system provides tool-free electrical connection.
- Effective thermal management.
- More light output and service life.
- High energy saving potential.
- The original aesthetic design.
- Max. 32 high power white LEDs.
- Available in seven different colour temperatures. 2700K (warm white) 3000K (warm white), 4000K (natural white), 5000K (cool white), 5700K (cool white), 6000K (cool white), 6500K (cool white).
- Good lighting uniformity.
- Mercury free.
- Sharp profile.
- Fully complies RoHS requirements.
- Recyclable raw materials.

- Driver features;
- Constant current.
- Harmonic filter protection.
- Short circuit protection and thermal protection integration.

#### Materials

- Canopy; polyester powder painted non-corrosive high-pressure die-cast aluminium.
- Refractor; tempered 5mm flat glass, easy replaceable.
- Pole mounting module; non-corrosive die-cast aluminium.
- Gasket; silicon.
- Bolt and nuts; stainless steel.
- Pole mounting bolt; hex socket (4 hex key wrenches) or bolt (13 wrenches) stainless steel.
- Pole mounting bold; 2 items.

#### Applications

- Highways
- Secondary roads
- Residential areas
- Parks
- Car parks
- Environment and security lighting
- Industrial areas
- Roundabouts
- Street and avenue

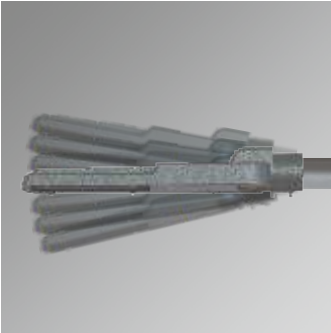


# Falcon Midi CL2075 M

## Die-Cast Aluminium Housing



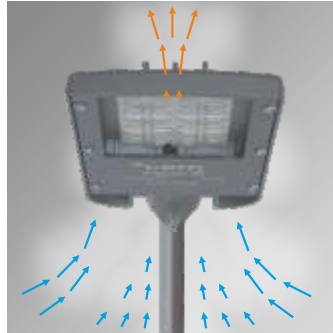
### Side Entry 0°/±5°/±10°/±15°



### Post Top 0°/±5°/±10°/±15°

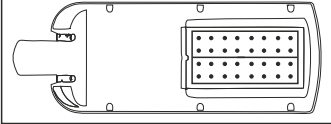


### Efficient Cooling System



### LED Configuration

#### 32 LED Version



#### Optional

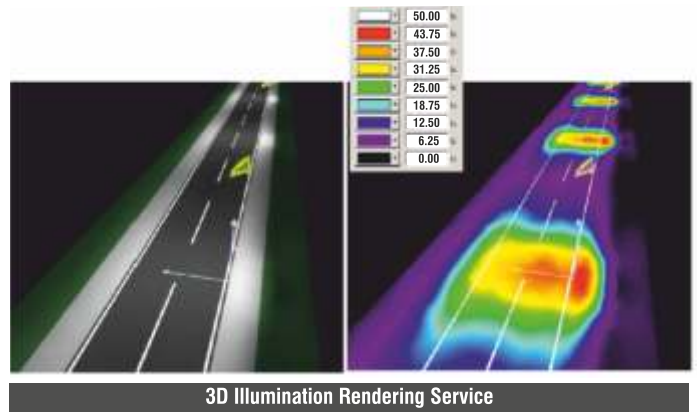


#### Technical Data

- 220-240V AC 50/60 Hz ECG
- Pg 9 thread
- Dimensions: 220x610x85mm
- Power factor ≥ 0.95
- CRI ≥ 70 (Standard)

#### Standards

- CE, TSE, GOST, RoHS, ENEC, TUV VDE, EN60598-2-3.
- EN62471 Photo biological safety of lamps and lamp systems.
- EN62031 LED modules for general lighting-safety specifications.



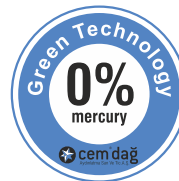
### CELVIN CHART



### CRI



### Glare-Free Optic Lens Design For Visual Comfort





# Falcon Midi CL2075 M

## Die-Cast Aluminium Housing



Products of Cemdag are Made in European Union. Customisation and Declaration of Conformity complies fully with CE Standards.



### Road Luminaires

#### LED Falcon Midi CL2075 M Die-Cast Aluminium Housing

IP66 / IK10 / 4000K (Standard) / RAL 7021 / CL1. Class 1 (Standard) / CRI>70 (Standard)



	En (mm)	Boy (mm)	h (mm)	Item /Box	Average Weight (kg)	Order Code	
32/~62W/ 600mA	220	610	85	1	4.15	L2075-LED062NW-ECG	
32/~72W/ 700mA	220	610	85	1	4.15	L2075-LED072NW-ECG	
32/~82W/ 800mA	220	610	85	1	4.15	L2075-LED082NW-ECG	
32/~100W/ 925mA	220	610	85	1	4.15	L2075-LED100NW-ECG	
32/~110W/1050mA	220	610	85	1	4.15	L2075-LED110NW-ECG	

#### Option Code

-RO. RAL 7021 Metallic (Standard)	-CW. Colour Temperature 6500K	-CR7. CRI>70 (Standard)
-RO. RAL 7047	-CW. Colour Temperature 6000K	-CR8. CRI>80 (Optional)
-RO. RAL 9007	-CW. Colour Temperature 5700K	-CR9. CRI>90 (Optional)
-DIM.0-10V or 1-10V Dimmable Electronic Driver	-CW. Colour Temperature 5000K	-CL1. Class 1 (Standard)
-ONE. Stand Alone Automation	-NW. Colour Temperature 4000K (Standard)	-CL2. Class 2 (Optional)
-DAL. DALI Electronic Driver	-WW. Colour Temperature 3000K	-EG. Eco Gold Lumen Package (Standard)
-IoT. Internet of Things Automation	-WW. Colour Temperature 2700K	-PP. Performance Platinum Lumen Package (Optional)
-MDBA. Wall Console (Accessories)	-COL.1030 (Standard)	-EX. Atex (Optional)

According to your preference, please add the **Option Code** at the end of the **Order Code**. Lumens are minimum 115 lm/W maximum 145 lm/W depends on currents and LED quantities.

Standard lens is COL1030. According to your preference, please add the **Optional Lens Code** at the end of the **Order Code**. To see other lens options please see COL options page

#### Optional





# Falcon Macro CL2080 L

## Die-Cast Aluminium Housing



### Description

#### Features

- Mounting module is fixed to any post top or side entry spigot from 42 to 60 mm.
- Optional 76 mm spigot.
- Dustproof and jetproof to IP66.
- Quick, easy and safe installation.
- Complies with Me/Ce/S road lighting standards EN13201.
- Special designed optics maximizes the distance between poles.
- High quality LED modules from approved international suppliers.
- Thermal-protected, voltage regulated drivers.
- Class I (standard) or class II (optional).
- Low CO<sub>2</sub> emission.
- 14 adjustable tilt angles; 0, ±5, ±10, ±15 for side entry 0, ±5, ±10, ±15 for post top.
- Choice of any RAL colour on request.
- Standard RAL 7021 (Metalic).
- Low service and maintenance costs.
- Maximized energy savings.
- The die -cast aluminium body and high quality materials ensure durability.
- Vandal proof and vibration proof.
- The latest led solution for outdoor lighting.
- The right lighting performance for project requirements.
- Available in three different colour rendering index. CRI > 70 (standard), CRI > 80 (optional) or CRI > 90 (optional).
- Easy connect system provides tool-free electrical connection.
- Effective thermal management.
- More light output and service life.
- High energy saving potential.
- The original aesthetic design.
- Max. 64 high power white LEDs.
- Available in seven different colour temperatures. 2700K (warm white), 3000K (warm white), 4000K (natural white), 5000K (cool white), 5700K (cool white), 6000K (cool white), 6500K (cool white).
- Good lighting uniformity.
- Mercury free.
- Sharp profile.
- Fully complies RoHS requirements.
- Recyclable raw materials.

#### Driver features;

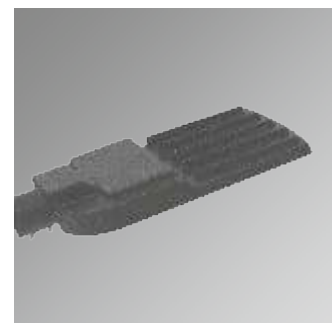
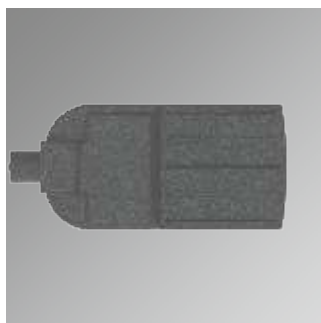
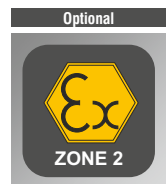
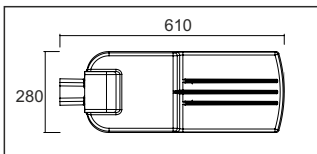
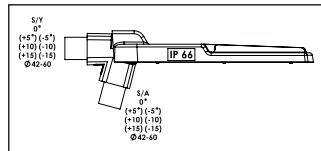
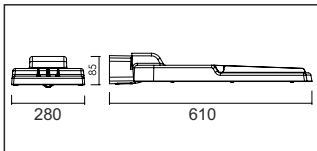
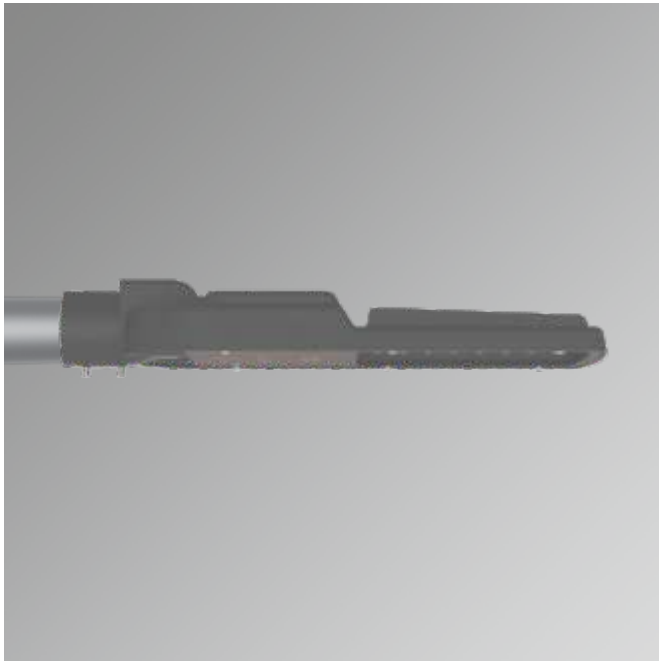
- Constant current.
- Harmonic filter protection.
- Short circuit protection and thermal protection integration.

#### Materials

- Canopy; polyester powder painted non-corrosive high-pressure die-cast aluminium.
- Refractor; tempered 5mm flat glass, easy replacable.
- Pole mounting module; non-corrosive die-cast aluminium.
- Clips; aluminium clips with stainless steel spring.
- Gasket; silicon.
- Bolt and nuts; stainless steel.
- Pole mounting bolt; hex socket (4 hex key wrenches) or bolt (13 wrenches) stainless steel.
- Pole mounting bolt; 2 items.

#### Applications

- Highways
- Secondary roads
- Residential areas
- Parks
- Car parks
- Environment and security lighting
- Industrial areas
- Roundabouts
- Street and avenue



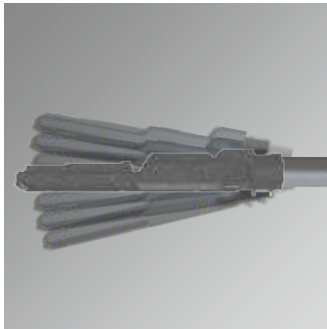


# Falcon Macro CL2080 L

## Die-Cast Aluminium Housing



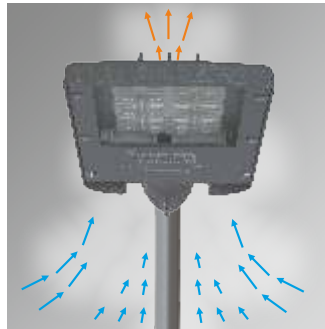
### Side Entry 0°/±5°/±10°/±15°



### Post Top 0°/±5°/±10°/±15°

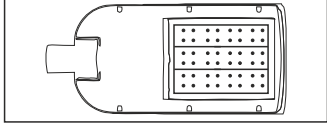


### Efficient Cooling System



### LED Configuration

#### 48 LED Version



#### Optional

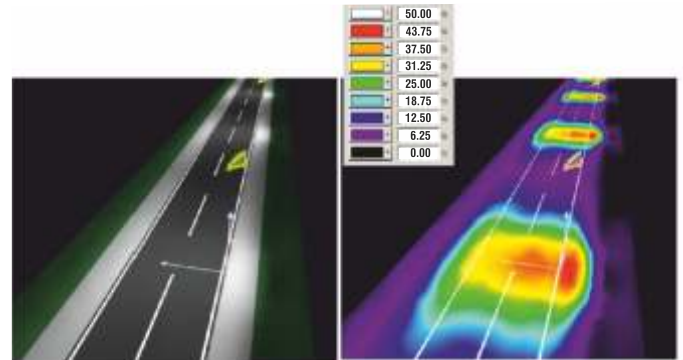


#### Technical Data

- 220-240V AC 50/60 Hz ECG
- Pg 9 thread
- Dimensions: 220x610x85mm
- Power factor > 0.95
- CRI > 70 (Standard)

#### Standards

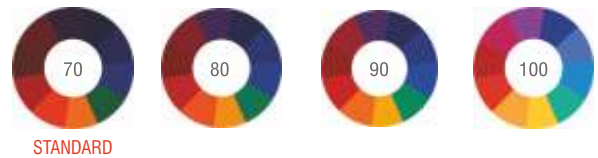
- CE, TSE, GOST, RoHS, ENEC, TUV VDE, EN60598-2-3.
- EN62471 Photo biological safety of lamps and lamp systems.
- EN62031 LED modules for general lighting-safety specifications.



### CELVIN CHART



### CRI



### Glare-Free Optic Lens Design For Visual Comfort





# Falcon Macro CL2080 L

## Die-Cast Aluminium Housing



Products of Cemdag are Made in European Union Custom Union and Declaration of Conformity complies fully with CE Standards.



### Road Luminaires

### LED Falcon Macro CL2080 L Die-Cast Aluminium Housing

IP66 / IK10 / 4000K (Standard) / RAL 7021 / CL1, Class 1 (Standard) / CRI>70 (Standard)



	W (mm)	L (mm)	h (mm)	Item /Box	Average Weight (kg)	Order Code	
48/~90W 600mA	280	610	85	1	6.60	L2080-LED090NW-ECG	
48/~110W 700mA	280	610	85	1	6.60	L2080-LED110NW-ECG	
48/~120W 800mA	280	610	85	1	6.60	L2080-LED120NW-ECG	
48/~155W 925mA	280	610	85	1	6.60	L2080-LED155NW-ECG	
48/~165W 1050mA	280	610	85	1	6.60	L2080-LED165NW-ECG	

#### Option Code

-RO. RAL 9007 (Standard)	-CW. Colour Temperature 6500K	-CR7. CRI>70 (Standard)
-RO. RAL 7047	-CW. Colour Temperature 6000K	-CR8. CRI>80 (Optional)
-RO. RAL 7021 (Metalic)	-CW. Colour Temperature 5700K	-CR9. CRI>90 (Optional)
-DIM.0-10V or 1-10V Dimmable Electronic Driver	-CW. Colour Temperature 5000K	-CL1. Class 1 (Standard)
-ONE. Stand Alone Automation	-NW. Colour Temperature 4000K (Standard)	-CL2. Class 2 (Optional)
-DAL. DALI Electronic Driver	-WW. Colour Temperature 3000K	-EG. Eco Gold Lumen Package (Standard)
-IoT. Internet of Things Automation	-WW. Colour Temperature 2700K	-PP. Performance Platinum Lumen Package (Optional)
-MDBA. Wall Console (Accessories)	-COL.1030 (Standard)	-EX. Atex (Optional)

According to your preference, please add the **Option Code** at the end of the **Order Code**

Lumens are minimum 115 lm/W maximum 145 lm/W depends on currents and LED quantities.

Standard lens is COL1030. According to your preference, please add the **Optional Lens Code** at the end of the **Order Code**. To see other lens options please see COL options page

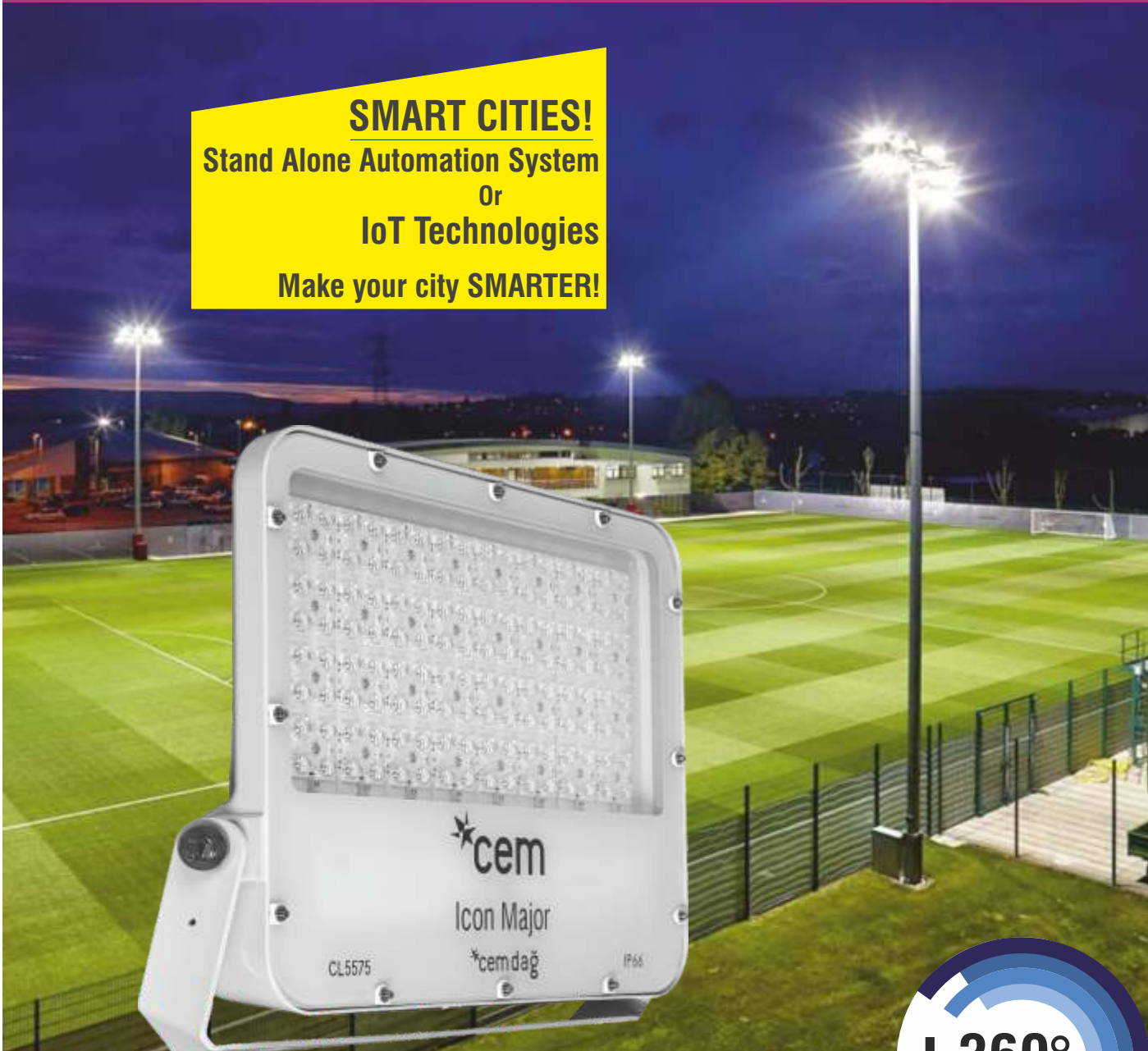
#### Optional





# LED Icon Die-Cast Aluminium Housing Series

**SMART CITIES!**  
Stand Alone Automation System  
Or  
IoT Technologies  
Make your city SMARTER!



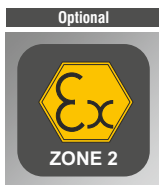
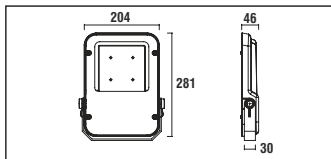
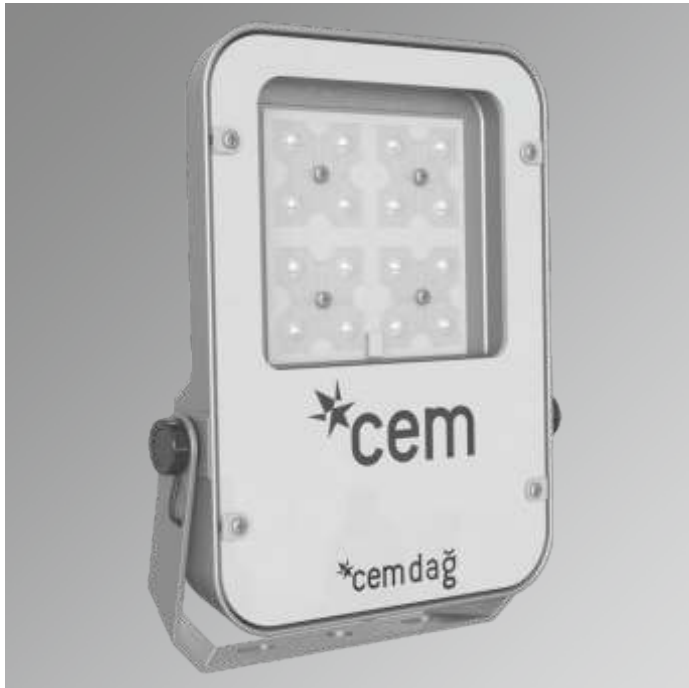
**LED Icon**

**CL5515 - CL5535 - CL5555 - CL5575**

Eco Gold Lumen Package Performance Platinum Lumen Package







## Description

### Features

- Dustproof and jetproof to IP66.
- Quick, easy and safe installation.
- Design patent from TPE.
- High quality LED modules from approved international suppliers.
- Thermal-protected, voltage regulated drivers.
- Class I (standard) or class II (optional).
- Low CO<sub>2</sub> emission.
- Choice of any RAL colour on request.
- Standart RAL 7047
- Low service and maintenance costs.
- Maximized energy savings.
- The die -cast aluminium body and high quality materials ensure durability.
- Vandal proof and vibration proof.
- The latest led solution for outdoor lighting.
- The right lighting performance for project requirements.
- Available in three different colour rendering index. CRI > 70 (standard), CRI > 80 (optional), or CRI > 90 (optional).
- Easy connect system provides tool-free electrical connection.
- Effective thermal management.
- More light output and service life.
- High energy saving potential.
- The original aesthetic design.
- Max. 16 high power white LEDs.
- Available in seven different colour temperatures; 2700K (warm white), 3000K (warm white), 4000K (natural white), 5000K (cool white), 5700K (cool white), 6000K (cool white), 6500K (cool white).
- Good lighting uniformity.
- Mercury free.
- Sharp profile.
- Fully complies RoHS requirements.
- Recyclable ♻️ raw materials.

### Driver features;

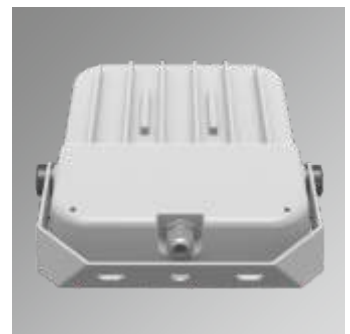
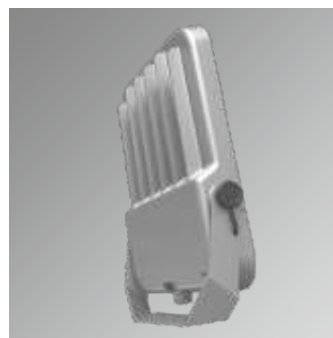
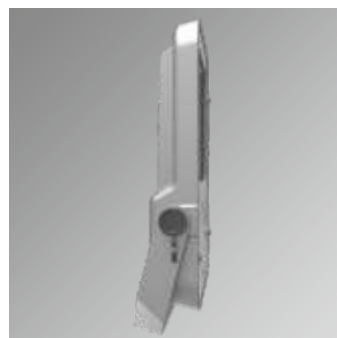
- Constant current.
- Harmonic filter protection.
- Short circuit protection and thermal protection integration.

### Materials

- Canopy; polyester powder painted non-corrosive high-pressure die-cast aluminium.
- Refractor; tempered 5mm flat glass, easy replaceable.
- Gasket; silicon.
- Bolt and nuts; stainless steel.

### Applications

- Parks
- Car parks
- Environment and security lighting



# Icon Mini CL5515 LED Die-Cast Aluminium Housing



Products of Cemdağ are Made in European Union Custom Union and Declaration of Conformity complies fully with CE Standards.

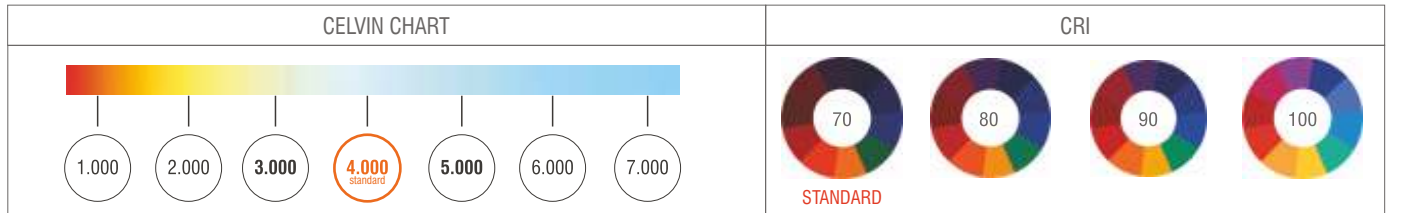
## Floodlights Icon Mini CL5515 Die-Cast Aluminium Housing IP66 / IK10 / 4000K (Standard) / RAL 7047 / CL1. Class 1 (Standard) / CRI>70 (Standard)

	W (mm)	L (mm)	h (mm)	Item /Box	Average Weight (kg)	Order Code
16/~35W/ 700mA	204	281	46	1	2.30	L5515-LED035NW-ECG
16/~50W/ 925mA	204	281	46	1	2.30	L5515-LED050NW-ECG
16/~60W/1050mA	204	281	46	1	2.30	L5515-LED060NW-ECG

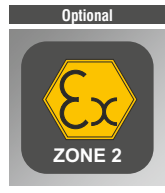
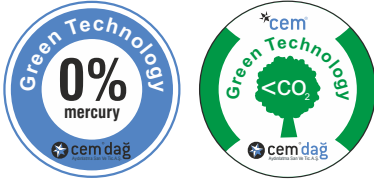
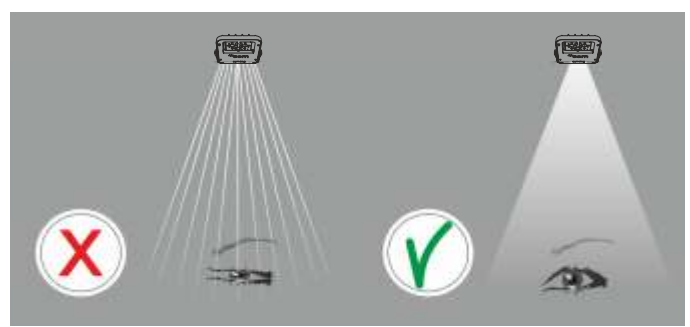
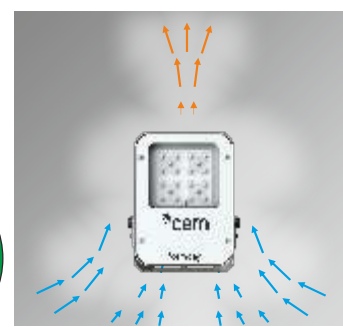
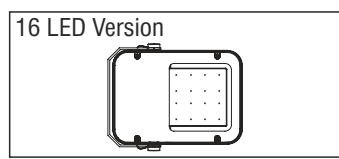
Option Code			
-RO.RAL 7021 (Metalic)	-CW. Colour Temperature 6500K	-CR7. CRI>70 (Standard)	-COL.1550 (Standard)
-RO.RAL 7047 (Standard)	-CW. Colour Temperature 6000K	-CR8. CRI>80 (Optional)	-EX. Atex (Optional)
-RO.RAL 9007	-CW. Colour Temperature 5700K	-CR9. CRI>90 (Optional)	
-DIM.0-10V or 1-10V Dimmable Electronic Driver	-CW. Colour Temperature 5000K	-CL1. Class 1 (Standard)	
-ONE. Stand Alone Automation	-NW. Colour Temperature 4000K (Standard)	-CL2. Class 2 (Optional)	
-DAL. DALI Electronic Driver	-WW. Colour Temperature 3000K	-EG. Eco Gold Lumen Package (Standard)	
-IoT. Internet of Things Automation	-WW. Colour Temperature 2700K	-PP. Performance Platinum Lumen Package (Optional)	

According to your preference, please add the **Option Code** at the end of the **Order Code**. Lumens are minimum 115 lm/W maximum 145 lm/W depends on currents and LED quantities.

Standard lens is COL1550. According to your preference, please add the **Optional Lens Code** at the end of the **Order Code**. To see other lens options please see COL options page



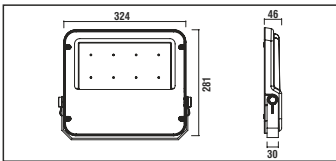
### LED Configuration      Efficient Cooling System      Glare-Free Optic Lens Design For Visual Comfort





# Icon Midi CL5535

## Die-Cast Aluminium Housing



### Description

#### Features

- Dustproof and jetproof to IP66.
- Quick, easy and safe installation.
- Design patent from TPE.
- High quality LED modules from approved international suppliers.
- Thermal-protected, voltage regulated drivers.
- Class I (standard) or class II (optional).
- Low CO<sub>2</sub> emission.
- Choice of any RAL colour on request.
- Standart RAL 7047
- Low service and maintenance costs.
- Maximized energy savings.
- The die -cast aluminium body and high quality materials ensure durability.
- Vandal proof and vibration proof.
- The latest led solution for outdoor lighting.
- The right lighting performance for project requirements.
- Available in three different colour rendering index. CRI > 70 (standard), CRI > 80 (optional) or CRI > 90 (optional).
- Easy connect system provides tool-free electrical connection.
- Effective thermal management.
- More light output and service life.
- High energy saving potential.
- The original aesthetic design.
- Maximum 32 high power white LEDs.
- Available in seven different colour temperatures; 2700K (warm white) 3000K (warm white), 4000K (natural white), 5000K (cool white), 5700K (cool white), 6000K (cool white), 6500K (cool white)
- Good lighting uniformity.
- Mercury free.
- Sharp profile.
- Fully complies RoHS requirements.
- Recyclable ♻️ raw materials.

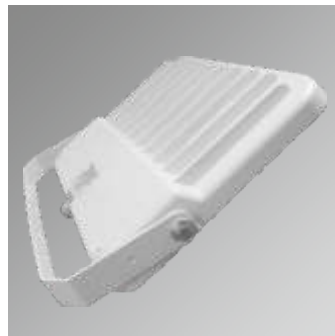
- Driver features;
- Constant current.
  - Harmonic filter protection.
  - Short circuit protection and thermal protection integration.

#### Materials

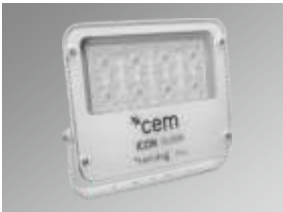
- Canopy; polyester powder painted non-corrosive high-pressure die-cast aluminium.
- Refractor; tempered 5mm flat glass, easy replaceable.
- Gasket; silicon.
- Bolt and nuts; stainless steel.

#### Applications

- Sport facilities
- Car parks
- Parks
- Industrial areas
- Gymnasiums
- Seaports
- Stadium stands
- Architectural areas
- Security
- Arenas
- Building facades
- Shipyards
- Construction site
- General floodlighting



# Icon Midi CL5535 LED Die-Cast Aluminium Housing



## Floodlights LED Icon Midi CL5535 Die-Cast Aluminium Housing

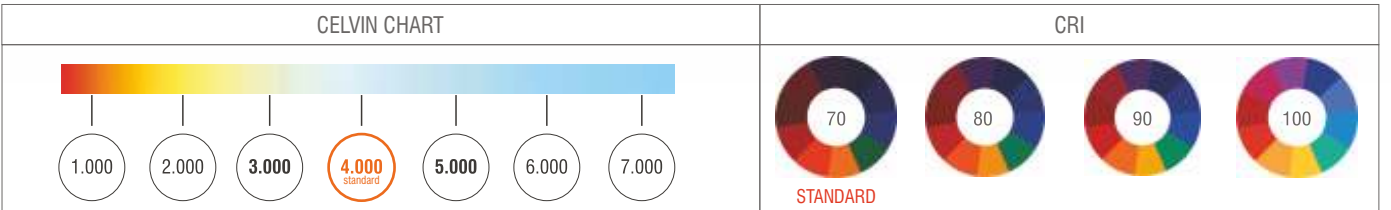
IP66 / IK10 / 4000K (Standard) / RAL 7047 / CL1. Class 1 (Standard) / CRI>70 (Standard)

	W (mm)	L (mm)	h (mm)	Item /Box	Average Weight (kg)	Order Code
32/~72W/ 700mA	324	281	46	1	4.00	L5535-LED072NW-ECG
32/~82W/ 800mA	324	281	46	1	4.00	L5535-LED082NW-ECG
32/~100W/ 925mA	324	281	46	1	4.00	L5535-LED100NW-ECG
32/~110W/ 1050mA	324	281	46	1	4.00	L5535-LED110NW-ECG

Option Code			
-RO.RAL 7021 (Metalic)	-CW. Colour Temperature 6500K	-CR7. CRI>70 (Standard)	-COL.1550 (Standard)
-RO.RAL 7047 (Standard)	-CW. Colour Temperature 6000K	-CR8. CRI>80 (Optional)	-EX. Atex (Optional)
-RO.RAL 9007	-CW. Colour Temperature 5700K	-CR9. CRI>90 (Optional)	
-DIM.0-10V or 1-10V Dimmable Electronic Driver	-CW. Colour Temperature 5000K	-CL1. Class 1 (Standard)	
-ONE. Stand Alone Automation	-NW. Colour Temperature 4000K (Standard)	-CL2. Class 2 (Optional)	
-DAL. DALI Electronic Driver	-WW. Colour Temperature 3000K	-EG. Eco Gold Lumen Package (Standard)	
-IoT. Internet of Things Automation	-WW. Colour Temperature 2700K	-PP. Performance Platinum Lumen Package (Optional)	

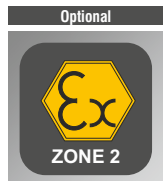
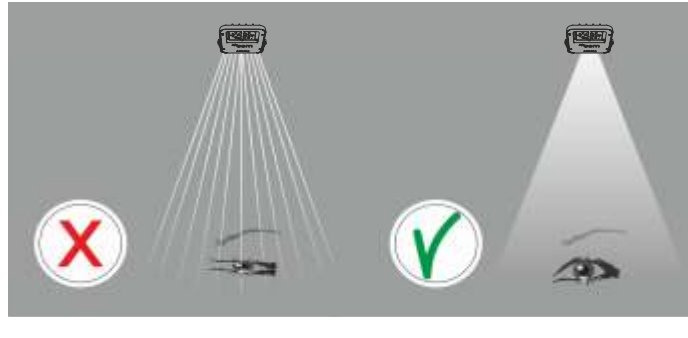
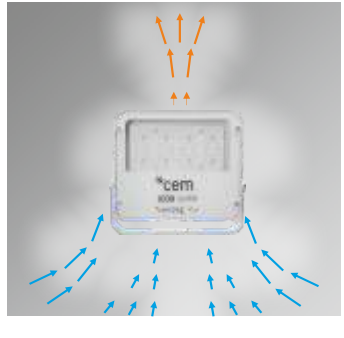
According to your preference, please add the **Option Code** at the end of the **Order Code**. Lumens are minimum 115 lm/W maximum 145 lm/W depends on currents and LED quantities.

Standard lens is COL1550. According to your preference, please add the **Optional Lens Code** at the end of the **Order Code**. To see other lens options please see COL options page

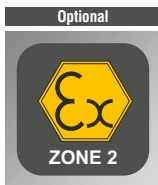
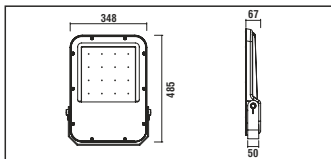


### LED Configuration      Efficient Cooling System      Glare-Free Optic Lens Design For Visual Comfort

32 LED Version



Description



Features

- Dustproof and jetproof to IP66.
- Quick, easy and safe installation.
- Design patent from TPE.
- High quality LED modules from approved international suppliers.
- Thermal-protected, voltage regulated drivers.
- Class I (standard) or class II (optional).
- Low CO<sub>2</sub> emission.
- Choice of any RAL colour on request.
- Standart RAL 7047
- Low service and maintenance costs.
- Maximized energy savings.
- The die -cast aluminium body and high quality materials ensure durability.
- Vandal proof and vibration proof.
- The latest led solution for outdoor lighting.
- The right lighting performance for project requirements.
- Available in three different colour rendering index. CRI>70(standard), CRI>80(optional) or CRI>90(optional).
- Easy connect system provides tool-free electrical connection.
- Effective thermal management.
- More light output and service life.
- High energy saving potential.
- The original aesthetic design.
- Maximum 64 high power white LEDs.
- Available in seven different colour temperatures; 2700K (warm white) 3000K (warm white), 4000K (natural white), 5000K (cool white), 5700K (cool white), 6000K (cool white), 6500K (cool white)
- Good lighting uniformity.
- Mercury free.
- Sharp profile.
- Fully complies RoHS requirements.
- Recyclable ♻️ raw materials.

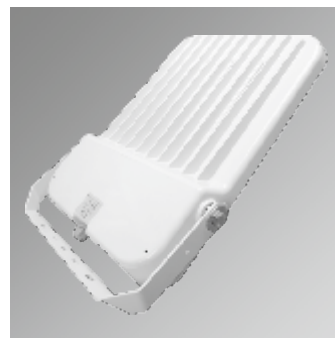
- Driver features;
- Constant current.
  - Harmonic filter protection.
  - Short circuit protection and thermal protection integration.

Materials

- Canopy; polyester powder painted non-corrosive high-pressure die-cast aluminium.
- Refractor; tempered 5mm flat glass, easy replacable.
- Gasket; silicon.
- Bolt and nuts; stainless steel.

Applications

- Sport facilities
- Car parks
- Parks
- Industrial areas
- Gymnasiums
- Seaports
- Stadium stands
- Architectural areas
- Security
- Arenas
- Building facades
- Shipyards
- Construction site
- General floodlighting



# Icon Maxi CL5555 LED Die-Cast Aluminium Housing



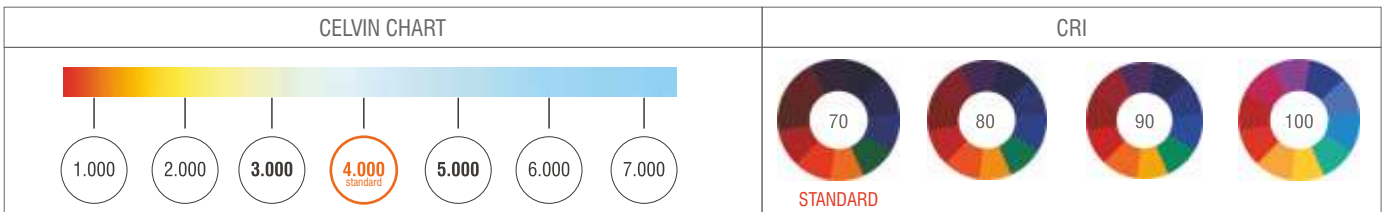
## Floodlights LED Icon Maxi CL5555 Die-Cast Aluminium Housing IP66 / IK10 / 4000K (Standard) / RAL 7047 / CL1. Class 1 (Standard) / CRI>70 (Standard)

	W (mm)	L (mm)	h (mm)	Item /Box	Average Weight (kg)	Order Code
64/~125W/ 600mA	348	485	67	1	7.80	L5555-LED125NW-ECG
64/~150W/ 700mA	348	485	67	1	7.80	L5555-LED150NW-ECG
64/~175W/ 800mA	348	485	67	1	7.80	L5555-LED175NW-ECG
64/~200W/ 925mA	348	485	67	1	7.80	L5555-LED200NW-ECG
64/~220W/ 1050mA	348	485	67	1	7.80	L5555-LED220NW-ECG

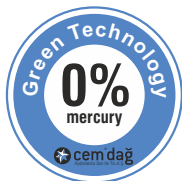
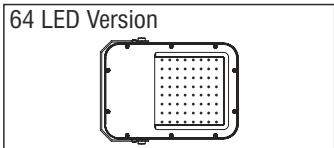
Option Code			
-RO. RAL 7021 (Metalic)	-CW. Colour Temperature 6500K	-CR7. CRI>70 (Standard)	-COL.1550 (Standard)
-RO. RAL 7047 (Standard)	-CW. Colour Temperature 6000K	-CR8. CRI>80 (Optional)	-EX.Atex (Optional)
-RO. RAL 9007	-CW. Colour Temperature 5700K	-CR9. CRI>90 (Optional)	
-DIM.0-10V or 1-10V Dimmable Electronic Driver	-CW. Colour Temperature 5000K	-CL1. Class 1 (Standard)	
-ONE. Stand Alone Automation	-NW. Colour Temperature 4000K (Standard)	-CL2. Class 2 (Optional)	
-DAL. DALI Electronic Driver	-WW. Colour Temperature 3000K	-EG. Eco Gold Lumen Package (Standard)	
-IoT. Internet of Things Automation	-WW. Colour Temperature 2700K	-PP. Performance Platinum Lumen Package (Optional)	

According to your preference, please add the **Option Code** at the end of the **Order Code**  
Lumens are minimum 115 lm/W maximum 145 lm/W depends on currents and LED quantities.

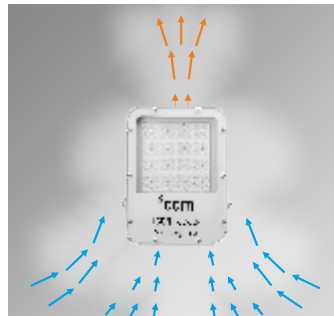
Standard lens is COL1550. According to your preference, please add the **Optional Lens Code** at the end of the **Order Code**. To see other lens options please see COL options page



### LED Configuration



### Efficient Cooling System



### Glare-Free Optic Lens Design For Visual Comfort





# Icon Major CL5575

## Die-Cast Aluminium Housing



### Description

#### Features

- Dustproof and jetproof to IP66.
- Quick, easy and safe installation.
- Design patent from TPE.
- High quality LED modules from approved international suppliers.
- Thermal-protected, voltage regulated drivers.
- Class I (standard) or class II (optional).
- Low CO<sub>2</sub> emission.
- Choice of any RAL colour on request.
- Standart RAL 7047
- Low service and maintenance costs.
- Maximized energy savings.
- The die - cast aluminium body and high quality materials ensure durability.
- Vandal proof and vibration proof.
- The latest led solution for outdoor lighting.
- The right lighting performance for project requirements.
- Available in three different colour rendering index. CRI > 70 (standard), CRI > 80 (optional) or CRI > 90 (optional).
- Easy connect system provides tool-free electrical connection.
- Effective thermal management.
- More light output and service life.
- High energy saving potential.
- The original aesthetic design.
- Max. 128 high power white LEDs.
- Available in seven different colour temperatures; 2700K (warm white) 3000K (warm white), 4000K (natural white), 5000K (cool white), 5700K (cool white), 6000K (cool white), 6500K (cool white). 4000K (natural white), 5000K (cool white)
- Good lighting uniformity.
- Mercury free.
- Sharp profile.
- Fully complies RoHS requirements.
- Recyclable raw materials.

- Driver features;
- Constant current.
  - Harmonic filter protection.
  - Short circuit protection and thermal protection integration.

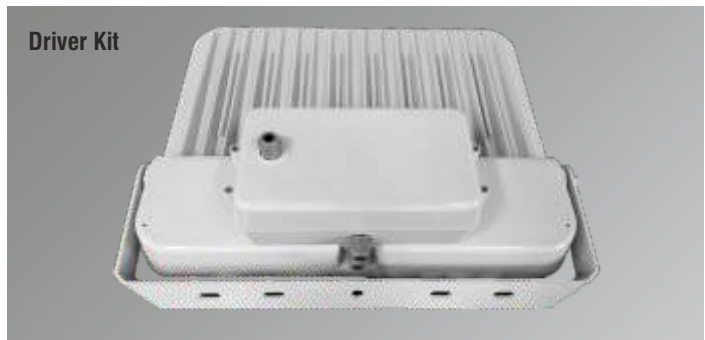
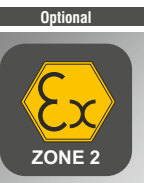
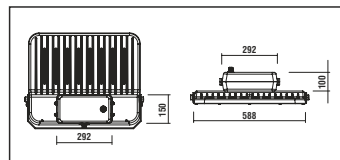
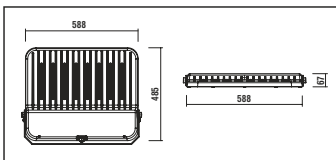
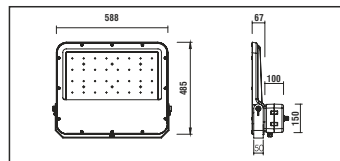
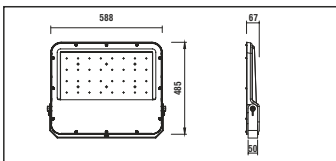
#### Materials

- Canopy; polyester powder painted non-corrosive high-pressure die-cast aluminium.
- Refractor; tempered 5mm flat glass, easy replaceable.
- Gasket; silicon.
- Bolt and nuts; stainless steel.

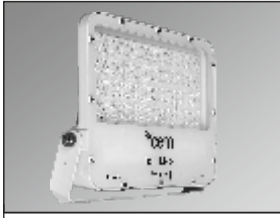
#### Applications

- Sport facilities
- Car parks
- Parks
- Industrial areas
- Gymnasiums
- Seaports
- Stadium stands
- Architectural areas
- Security
- Arenas
- Building facades
- Shipyards
- Construction site
- General floodlighting

#### Driver Kit



# LED Icon Major CL5575 Die-Cast Aluminium Housing



## Floodlights LED Icon Major CL5575 Die-Cast Aluminium Housing IP66 / IK10 / 4000K (Standard) / RAL 7047 / CL1. Class 1 (Standard) / CRI>70 (Standard)

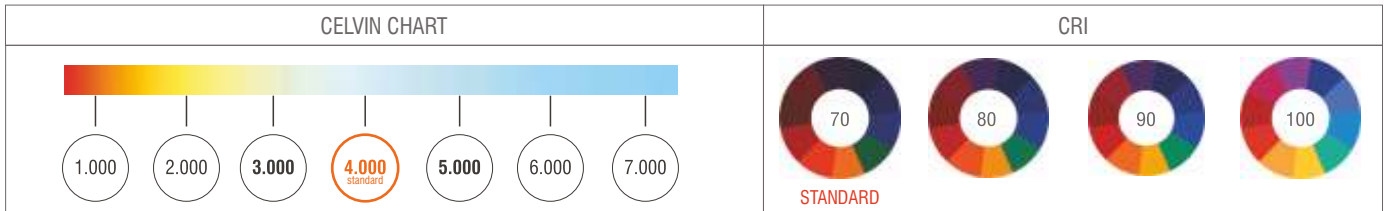
	W (mm)	L (mm)	h (mm)	Item /Box	Average Weight (kg)	Order Code
128 LED/300W/700mA	588	485	67	1	13.80	L5575-LED300NW-ECG
128 LED/320W/800mA	588	485	67	1	13.80	L5575-LED320NW-ECG
128 LED/400W/925mA	588	485	67	1	13.80	L5575-LED400NW-ECG
128 LED/430W/1050mA	588	485	67	1	13.80	L5575-LED430NW-ECG
128 LED/500W/1200mA	588	485	67	1	13.80	L5575-LED500NW-ECG

### Option Code

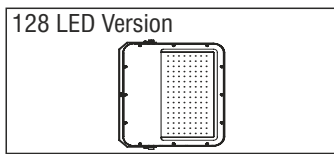
-RO.RAL 7021 Metallic	-CW. Colour Temperature 6500K	-CR7. CRI>70 (Standard)	-COL.1550 (Standard)
-RO.RAL 7047 (Standard)	-CW. Colour Temperature 6000K	-CR8. CRI>80 (Optional)	-EX. Atex (Optional)
-RO.RAL 9007	-CW. Colour Temperature 5700K	-CR9. CRI>90 (Optional)	
-DIM.0-10V or 1-10V Dimmable Electronic Driver	-CW. Colour Temperature 5000K	-CL1. Class 1 (Standard)	
-ONE. Stand Alone Automation	-NW. Colour Temperature 4000K (Standard)	-CL2. Class 2 (Optional)	
-DAL. DALI Electronic Driver	-WW. Colour Temperature 3000K	-EG. Eco Gold Lumen Package (Standard)	
-IoT. Internet of Things Automation	-WW. Colour Temperature 2700K	-PP. Performance Platinum Lumen Package (Optional)	

According to your preference, please add the **Option Code** at the end of the **Order Code**  
 Lumens are minimum 115 lm/W maximum 145 lm/W depends on currents and LED quantities.

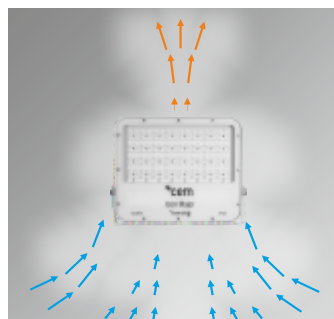
Standard lens is COL1550. According to your preference, please add the **Optional Lens Code** at the end of the **Order Code**. To see other lens options please see COL options page



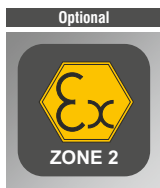
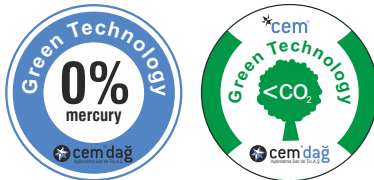
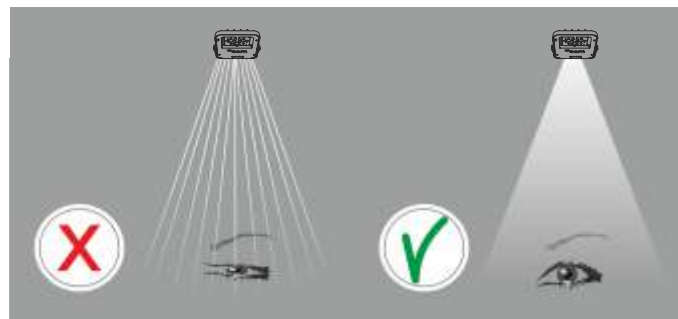
### LED Configuration



### Efficient Cooling System



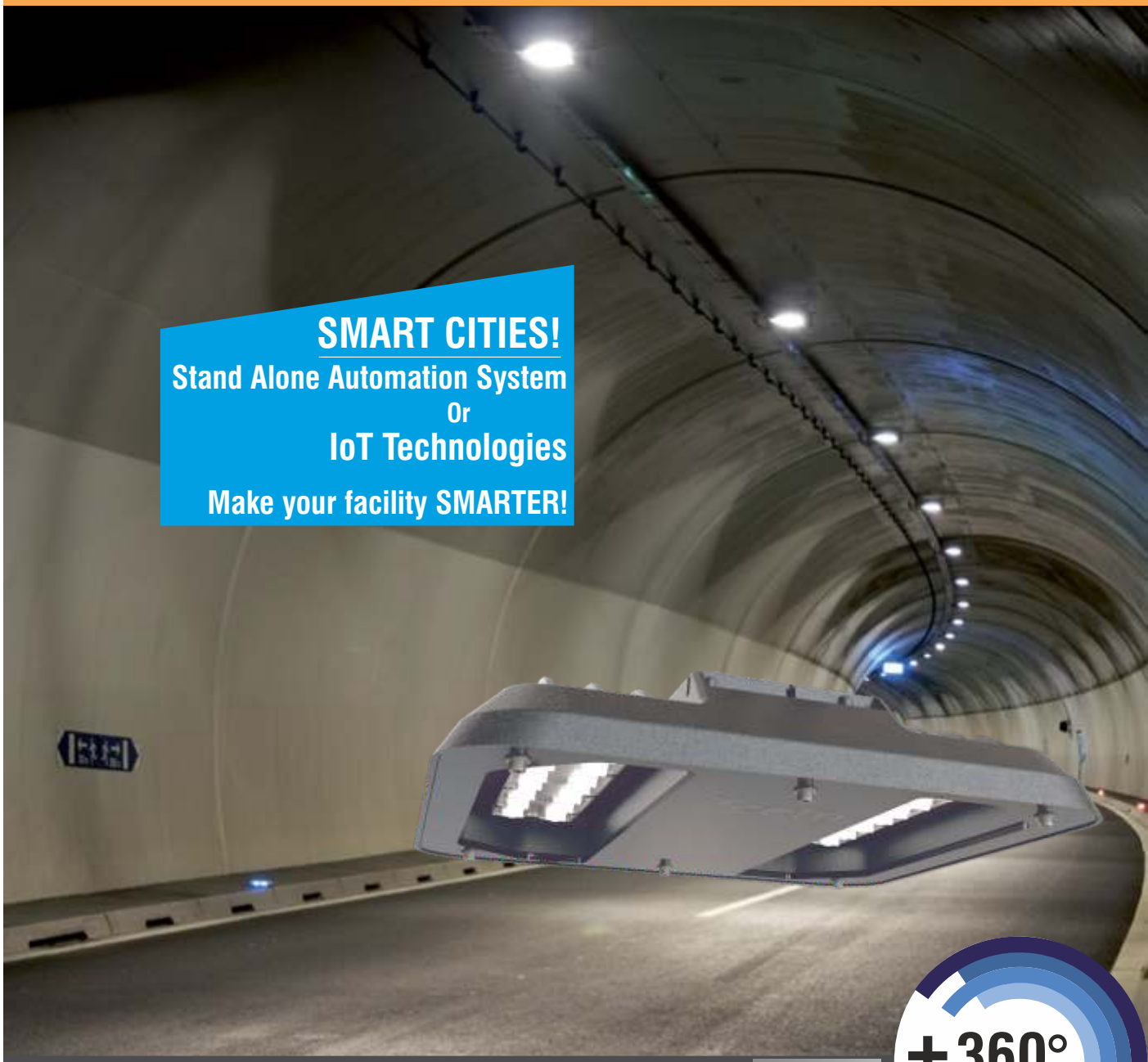
### Glare-Free Optic Lens Design For Visual Comfort





LED Tube Torque Series

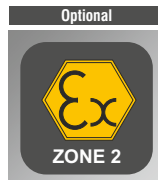
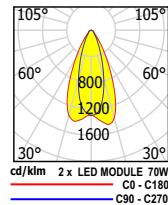
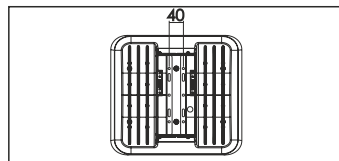
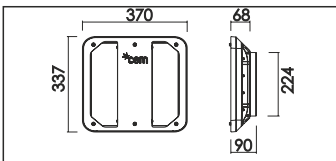
**SMART CITIES!**  
Stand Alone Automation System  
Or  
IoT Technologies  
Make your facility SMARTER!



**LED Tube Torque**  
CL4010 - CL4020

Eco Gold Lumen Package Performance Platinum Lumen Package





**Description**

**Features**

- Dustproof and jetproof to Ip66.
- Quick, easy and safe installation.
- Design patent from TPE.
- High quality LED modules from approved international suppliers.
- Luminaire lifetime is 50000 hours.
- Thermal-protected, voltage regulated drivers.
- Class I(standard) or class II (optional).
- Low CO<sub>2</sub> emission.
- Choice of any RAL colour on request.
- Standart RAL 9007
- Low service and maintenance costs.
- Maximized energy savings.
- The die -cast aluminium body and high quality materials ensure durability.
- Vandal proof and vibration proof.
- The latest led solution for outdoor lighting.
- The right lighting performance for project requirements.
- Available in three different colour rendering index. CRI>70(standard), CRI>80(optional) or CRI>90(optional).
- Easy connect system provides tool-free electrical connection.
- Effective thermal management.
- More light output and service life.
- High energy saving potential.
- The original aesthetic design.
- Max.32 high power white LEDs. (16+16)
- Available in seven different colour temperatures: 2700K (warm white), 3000K (warm white), 4000K (natural white), 5000K (cool white), 5700K (cool white), 6000K (cool white), 6500K (cool white).
- Good lighting uniformity.
- Mercury free.
- Sharp profile.
- Fully complies RoHS requirements.
- Recyclable ♻️ raw materials.

- Driver features;
- Constant current.
  - Harmonic filter protection.
  - Short circuit protection and thermal protection integration.

**Materials**

- Canopy; polyester powder painted non-corrosive high-pressure die-cast aluminium.
- Mounting system; stainless steel.
- Refractor; tempered 5mm flat glass, easy replaceable.
- Gasket; silicon.
- Bolt and nuts; stainless steel.

**Applications**

- Tunnels
- Underpasses





## Tunnel Luminaires LED Tube Torque CL4010

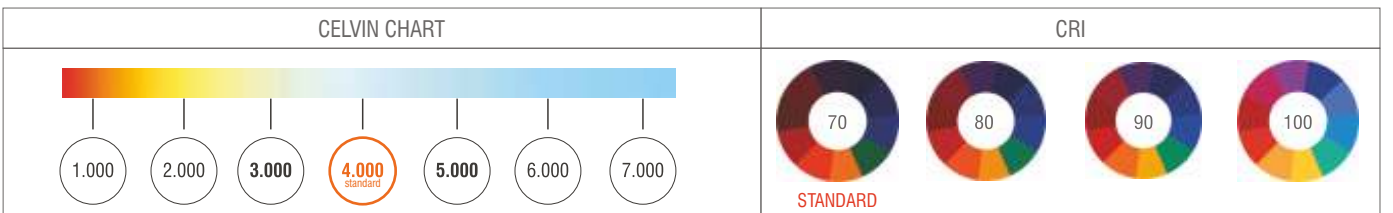
IP66 / IK10 / 4000K (Standard) / RAL 9007 / CL1. Class 1 (Standard) / CRI>70 (Standard)

	W (mm)	L (mm)	h (mm)	Item /Box	Average Weight (kg)	Order Code
32/~62W/ 600mA	370	337	90	1	5.20	L4010-LED062NW-ECG
32/~72W/ 700mA	370	337	90	1	5.20	L4010-LED072NW-ECG
32/~100W/ 925mA	370	337	90	1	5.20	L4010-LED100NW-ECG
32/~110W/ 1050mA	370	337	90	1	5.20	L4010-LED110NW-ECG

Option Code			
-RO.RAL 7021 Metallic	-CW. Colour Temperature 6500K	-CR7. CRI>70 (Standard)	-COL.1530 (Standard)
-RO.RAL 7047	-CW. Colour Temperature 6000K	-CR8. CRI>80 (Optional)	-EX.Atex (Optional)
-RO.RAL 9007 (Standard)	-CW. Colour Temperature 5700K	-CR9. CRI>90 (Optional)	
-DIM.0-10V or 1-10V Dimmable Electronic Driver	-CW. Colour Temperature 5000K	-CL1. Class 1 (Standard)	
-ONE. Stand Alone Automation	-NW. Colour Temperature 4000K (Standard)	-CL2. Class 2 (Optional)	
-DAL. DALI Electronic Driver	-WW. Colour Temperature 3000K	-EG. Eco Gold Lumen Package (Standard)	
-IoT. Internet of Things Automation	-WW. Colour Temperature 2700K	-PP. Performance Platinum Lumen Package (Optional)	
-MDBA. Wall Console (Accessories)	-Z. Stainless Z Track System (Standard)	-TS. Track System	

According to your preference, please add the **Option Code** at the end of the **Order Code**  
Lumens are minimum 115 lm/W maximum 145 lm/W depends on currents and LED quantities.

Standard lens is COL1530. According to your preference, please add the **Optional Lens Code** at the end of the **Order Code**. To see other lens options please see COL options page



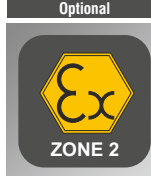
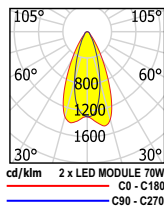
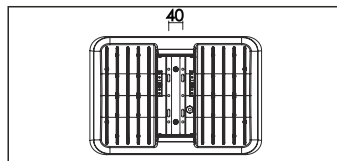
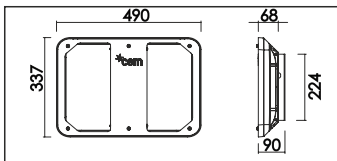
### LED Configuration

32 LEDs Version

### Efficient Cooling System

### Glare-Free Optic Lens Design For Visual Comfort

### Optional



**Description**

**Features**

- Dustproof and jetproof to Ip66.
- Quick, easy and safe installation.
- Design patent from TPE.
- High quality LED modules from approved international suppliers.
- Luminaire lifetime is 50000 hours.
- Thermal-protected, voltage regulated drivers.
- Class I (standard) or class II (optional).
- Low CO<sub>2</sub> emission.
- Choice of any RAL colour on request.
- Standart RAL 9007
- Low service and maintenance costs.
- Maximized energy savings.
- The die -cast aluminium body and high quality materials ensure durability.
- Vandal proof and vibration proof.
- The latest led solution for outdoor lighting.
- The right lighting performance for project requirements.
- Available in three different colour rendering index. CRI>70(standard), CRI>80(optional) or CRI>90(optional).
- Easy connect system provides tool-free electrical connection.
- Effective thermal management.
- More light output and service life.
- High energy saving potential.
- The original aesthetic design.
- Maximum 64 high power white LEDs. (32+32)
- Available in seven different colour temperatures; 2700K (warm white), 3000K (warm white), 4000K (natural white), 5000K (cool white), 5700K (cool white), 6000K (cool white), 6500K (cool white).
- Good lighting uniformity.
- Mercury free.
- Sharp profile.
- Fully complies RoHS requirements.
- Recyclable ♻️ raw materials.

**Driver features;**

- Constant current.
- Harmonic filter protection.
- Short circuit protection and thermal protection integration.

**Materials**

- Canopy; polyester powder painted non-corrosive high-pressure die-cast aluminium.
- Mounting system; stainless steel.
- Refractor; tempered 5mm flat glass, easy replaceable.
- Gasket; silicon.
- Bolt and nuts; stainless steel.

**Applications**

- Tunnels
- Underpasses





## Tunnel Lumunaires LED Tube Torque CL4020

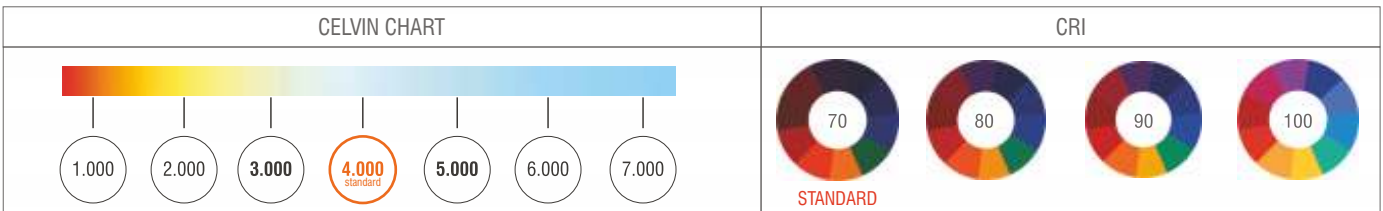
IP66 / IK10 / 4000K (Standard) / RAL 9007 / CL1. Class 1 (Standard) / CRI>70 (Standard)

	W (mm)	L (mm)	h (mm)	Item /Box	Average Weight (kg)	Order Code	
64/~125W/ 600mA	490	337	90	1	7.30	L4020-LED125NW-ECG	
64/~150W/ 700mA	490	337	90	1	7.30	L4020-LED150NW-ECG	
64/~175W/ 800mA	490	337	90	1	7.30	L4020-LED175NW-ECG	
64/~200W/ 925mA	490	337	90	1	7.30	L4020-LED200NW-ECG	
64/~220W/ 1050mA	490	337	90	1	7.30	L4020-LED220NW-ECG	

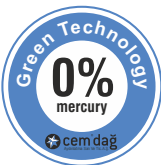
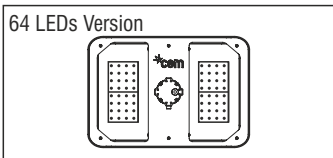
Option Code			
-RO.RAL 7021 Metallic	-CW. Colour Temperature 6500K	-CR7. CRI>70 (Standard)	-COL.1530 (Standard)
-RO.RAL 7047	-CW. Colour Temperature 6000K	-CR8. CRI>80 (Optional)	-EX.Atex (Optional)
-RO.RAL 9007 (Standard)	-CW. Colour Temperature 5700K	-CR9. CRI>90 (Optional)	
-DIM.0-10V or 1-10V Dimmable Electronic Driver	-CW. Colour Temperature 5000K	-CL1. Class 1 (Standard)	
-ONE. Stand Alone Automation	-NW. Colour Temperature 4000K (Standard)	-CL2. Class 2 (Optional)	
-DAL. DALI Electronic Driver	-WW. Colour Temperature 3000K	-EG. Eco Gold Lumen Package (Standard)	
-IoT. Internet of Things Automation	-WW. Colour Temperature 2700K	-PP Performance Platinum Lumen Package (Optional)	
-MDBA. Wall Console (Accessories)	-Z. Stainless Z Track System (Standard)	-TS. Track System	

According to your preference, please add the **Option Code** at the end of the **Order Code**  
Lumens are minimum 115 lm/W maximum 145 lm/W depends on currents and LED quantities.

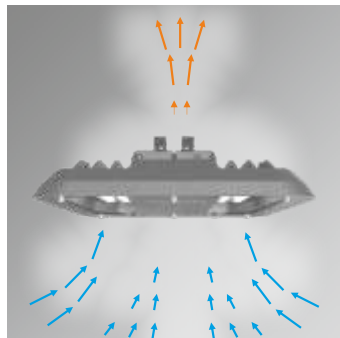
Standard lens is COL1530. According to your preference, please add the **Optional Lens Code** at the end of the **Order Code**. To see other lens options please see COL options page



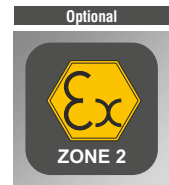
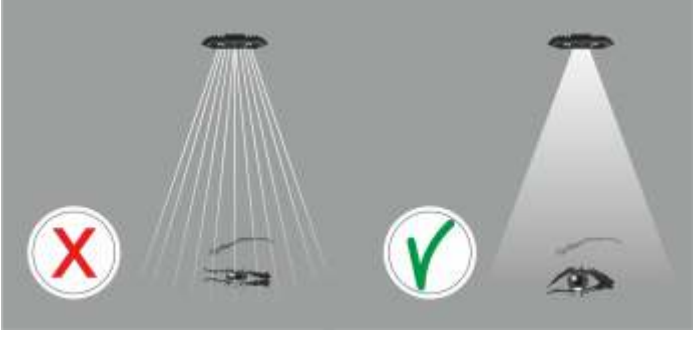
### LED Configuration



### Efficient Cooling System



### Glare-Free Optic Lens Design For Visual Comfort



LED Tube Matrix Series

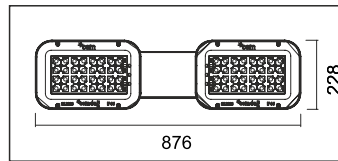
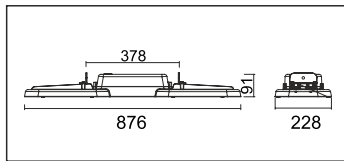
**SMART CITIES!**  
Stand Alone Automation System  
Or  
IoT Technologies  
Make your facility SMARTER!



**LED Tube Matrix**  
CL4030


Eco Gold Lumen Package Performance Platinum Lumen Package





## Description

### Features

- Dustproof and jetproof to IP66.
- Quick, easy and safe installation.
- Design patent from TPE.
- High quality LED modules from approved international suppliers.
- Thermal-protected, voltage regulated drivers.
- Class I (standard) or class II (optional).
- Low CO<sub>2</sub> emission.
- Choice of any RAL colour on request.
- Standart RAL 7047
- Low service and maintenance costs.
- Maximized energy savings.
- The die -cast aluminium body and high quality materials ensure durability.
- Vandal proof and vibration proof.
- The latest led solution for outdoor lighting.
- The right lighting performance for project requirements.
- Available in three different colour rendering index. CRI > 70 (standard), CRI > 80 (optional) or CRI > 90 (optional).
- Easy connect system provides tool-free electrical connection.
- Effective thermal management.
- More light output and service life.
- High energy saving potential.
- The original aesthetic design.
- Max. 64 high power white LEDs. (32+32)
- Available in seven different colour temperatures. 2700K (cool white) 3000K (warm white), 4000K (natural white), 5000K (cool white), 5700K (cool white), 6000K (cool white), 6500K (cool white).
- Good lighting uniformity.
- Mercury free.
- Sharp profile.
- Fully complies RoHS requirements.
- Recyclable  raw materials.

### Driver features;

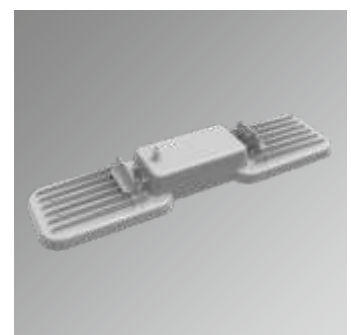
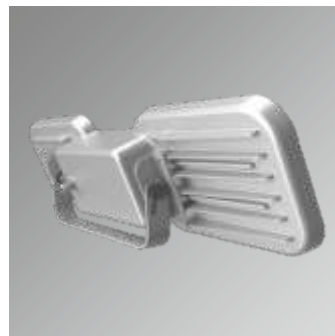
- Constant current.
- Harmonic filter protection.
- Short circuit protection and thermal protection integration.

### Materials

- Canopy; polyester powder painted non-corrosive high-pressure die-cast aluminium.
- Mounting system; stainless steel.
- Refractor; tempered 5mm flat glass, easy replacable.
- Gasket; silicon.
- Bolt and nuts; stainless steel.

### Applications

- Tunnels
- Underpasses





**Tunnel Luminares**  
**LED Tube Matrix CL4030**  
IP66 / IK10 / 4000K (Standard) / RAL 7047 / CL1. Class 1 (Standard) / CRI>70 (Standard)

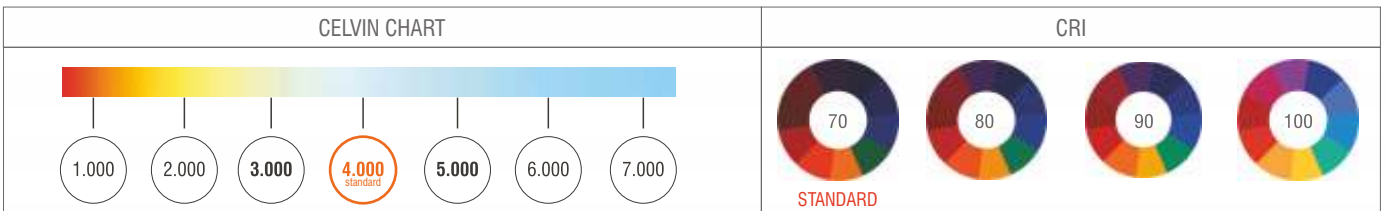
	W (mm)	L (mm)	h (mm)	Item /Box	Weight (kg)	Order Code
64/~125W/ 600mA	876	228	91	1	10.00	L4030-LED125NW-ECG
64/~150W/ 700mA	876	228	91	1	10.00	L4030-LED150NW-ECG
64/~175W/ 800mA	876	228	91	1	10.00	L4030-LED175NW-ECG
64/~200W/ 925mA	876	228	91	1	10.00	L4030-LED200NW-ECG
64/~220W/ 1050mA	876	228	91	1	10.00	L4030-LED220NW-ECG

**Option Code**

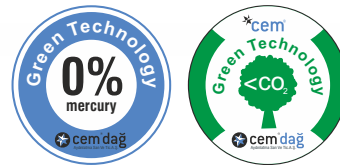
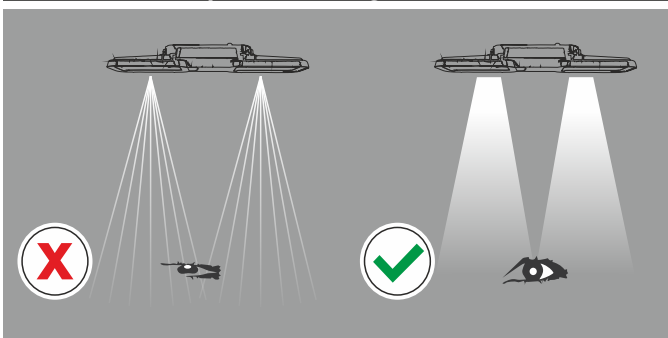
-RO.RAL 7021 Metallic	-CW. Colour Temperature 6500K	-CR7. CRI>70 (Standard)	-COL.1530 (Standard)
-RO.RAL 7047 (Standard)	-CW. Colour Temperature 6000K	-CR8. CRI>80 (Optional)	
-RO.RAL 9007	-CW. Colour Temperature 5700K	-CR9. CRI>90 (Optional)	
-DIM.0-10V or 1-10V Dimmable Electronic Driver	-CW. Colour Temperature 5000K	-CL1. Class 1 (Standard)	
-ONE. Stand Alone Automation	-NW. Colour Temperature 4000K (Standard)	-CL2. Class 2 (Optional)	
-DAL. DALI Electronic Driver	-WW. Colour Temperature 3000K	-EG. Eco Gold Lumen Package (Standard)	
-IoT. Internet of Things Automation	-WW. Colour Temperature 2700K	-PP. Performance Platinum Lumen Package (Optional)	
-MDBA. Wall Console (Accessories)	-Z. Stainless Z Track System (Standard)	-TS. Track System	

According to your preference, please add the **Option Code** at the end of the **Order Code**  
Lumens are minimum 115 lm/W maximum 145 lm/W depends on currents and LED quantities.

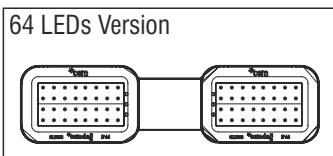
Standard lens is COL1530. According to your preference, please add the **Optional Lens Code** at the end of the **Order Code**. To see other lens options please see COL options page



**Glare-Free Optic Lens Design For Visual Comfort**



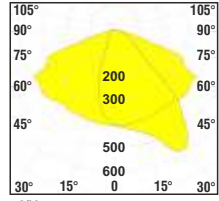
**LED Configuration**





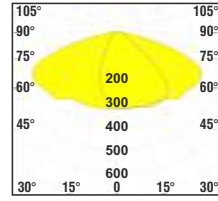
# LENS CODES OPTIONS

**COL1010**



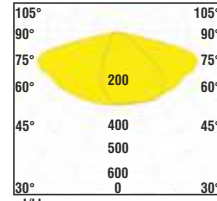
cd/klm  
—C0-C180 —C90-C270

**COL1020**



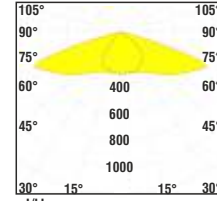
cd/klm  
—C0-C180 —C90-C270

**COL1030**



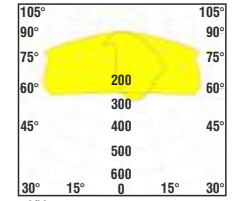
cd/klm  
—C0-C180 —C90-C270

**COL1040**



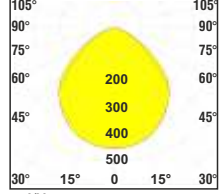
cd/klm  
—C0-C180 —C90-C270

**COL1650**



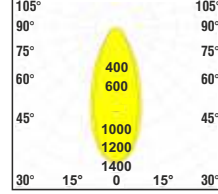
cd/klm  
—C0-C180 —C90-C270

**COL1530**



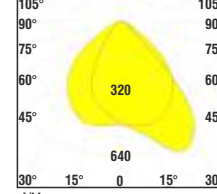
cd/klm  
—C0-C180 —C90-C270

**COL1540**



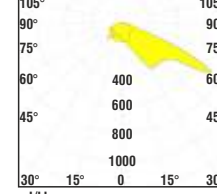
cd/klm  
—C0-C180 —C90-C270

**COL1550**



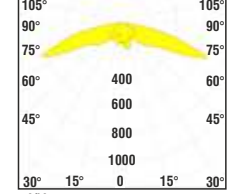
cd/klm  
—C0-C180 —C90-C270

**COL1630**



cd/klm  
—C0-C180 —C90-C270

**COL1660**



cd/klm  
—C0-C180 —C90-C270

